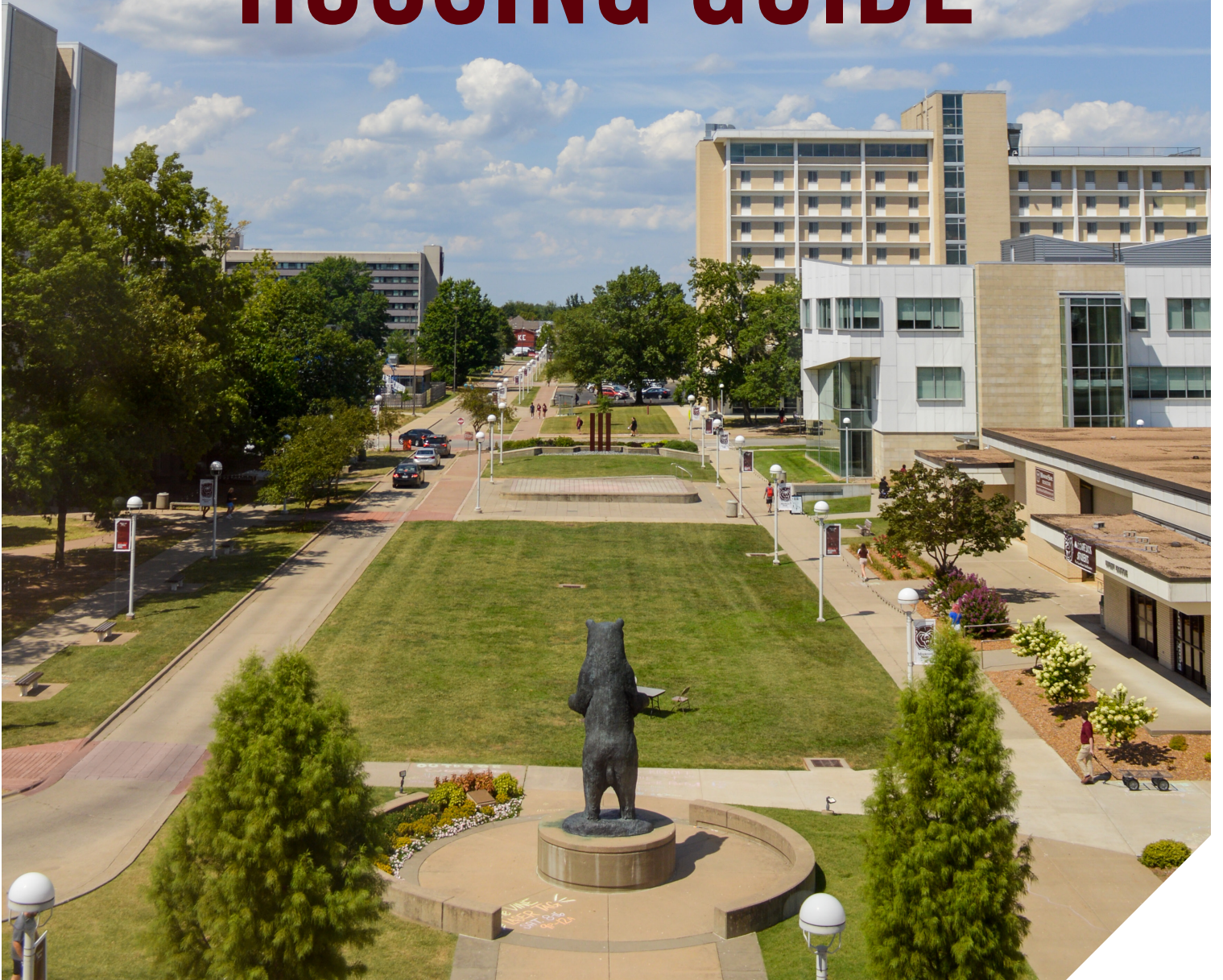




Missouri
State
UNIVERSITY

**CONFERENCE
HOUSING GUIDE**



CAMPUS HOUSING

Missouri State University's campus proudly offers a range of buildings and amenities that are as varied and unique as the thousands of residents who call it home each year.

THE MISSOURI STATE ADVANTAGE

Living or hosting an event on our campus offers many perks. Our comfortable close-knit communities offer the advantage of being right next door to events, recreation facilities and the downtown Springfield area, so you are never far from food and fun.

We offer a variety of facilities, venues, and residence halls, and invite you to explore how we can help you make your next event an unforgettable experience.

OUR VALUES

Missouri State University's Public Affairs Mission is built on the foundation of ethical leadership, cultural competence, and community engagement. These concepts are interwoven in all that we do, especially when you stay on campus. We offer spaces that accommodate wheelchairs, visual impairments, and different accessibility needs. We are happy to work with you and your group to make your stay comfortable and convenient. To request accommodations, please contact our Disability Resource Center in advance of your visit via phone call or e-mail at **417-836-4192** or at **DRC@MissouriState.edu**

Missouri State University adheres to a strict non-discrimination policy and does not discriminate on the basis of race, color, national origin (including ancestry, or any other subcategory of national origin recognized by applicable law), religion, sex (including marital status, family status, pregnancy, sexual orientation, gender identity, gender expression, or any other subcategory of sex recognized by applicable law), age, disability, veteran status, genetic information, or any other basis protected by applicable law in employment or in any program or activity offered or sponsored by the University. Sex discrimination encompasses sexual harassment, which includes sexual violence, and is strictly prohibited by Title IX of the Education Amendments of 1972.

COMPETITIVE AMENITIES

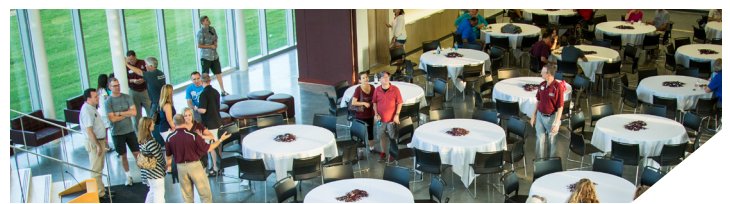
- All of our residence halls have a front desk that is staffed 24 hours a day and offer an access card system to increase security.
- All buildings are air conditioned and heated.
- All residence hall units offer a small or mid-size refrigerator and microwave for your use.
- Missouri State University's campus is smoke/tobacco free, including all of our residence halls.
- Our residence halls offer unique community lounges that are perfect for relaxing, mingling or meeting with other guests.
- Dining and catering options.
- The Blue Light Safety System is seen all around campus. In case of emergencies, these phones, equipped with cameras, can easily be located.

RESIDENCE HALL CAPACITIES

BUILDING NAME	CAPACITY
Blair-Shannon	714
Freddy House	722
Hammons House	570
Heitz House	378
Hutchens House	590
Scholars House	108
Wells House	474
Woods House	368

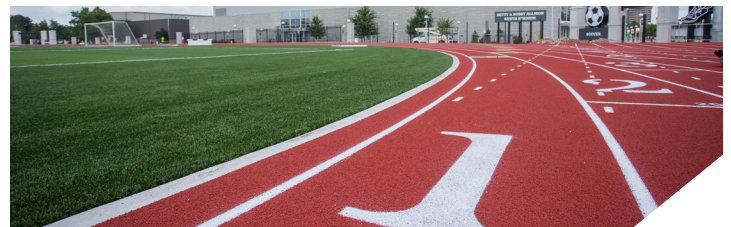
CONVENTION & EVENT FACILITIES

BUILDING NAME	SIZE (FT ²)	LARGEST THEATER	LARGEST BANQUET	8X10 BOOTHS
Plaster Student Union				
Grand Ballroom	7,200	600	550	64
Ballroom West	4,800	400	350	42
Ballroom East	2,400	200	120	22
Union Club	3,245	N/A	120	N/A
Traywick Parliamentary Room	2,967	120	N/A	N/A
Room 308/315	1,104	75	64	N/A
Room 312/314	860	60	48	N/A
Room 317	837	60	40	N/A
Board Room 309	306	N/A	12	N/A
Board Rooms 310/311	238	N/A	10	N/A
Davis-Harrington Welcome Center				
Atrium & Lobby	N/A	200	200	N/A



PERFORMANCE VENUES & ARENAS

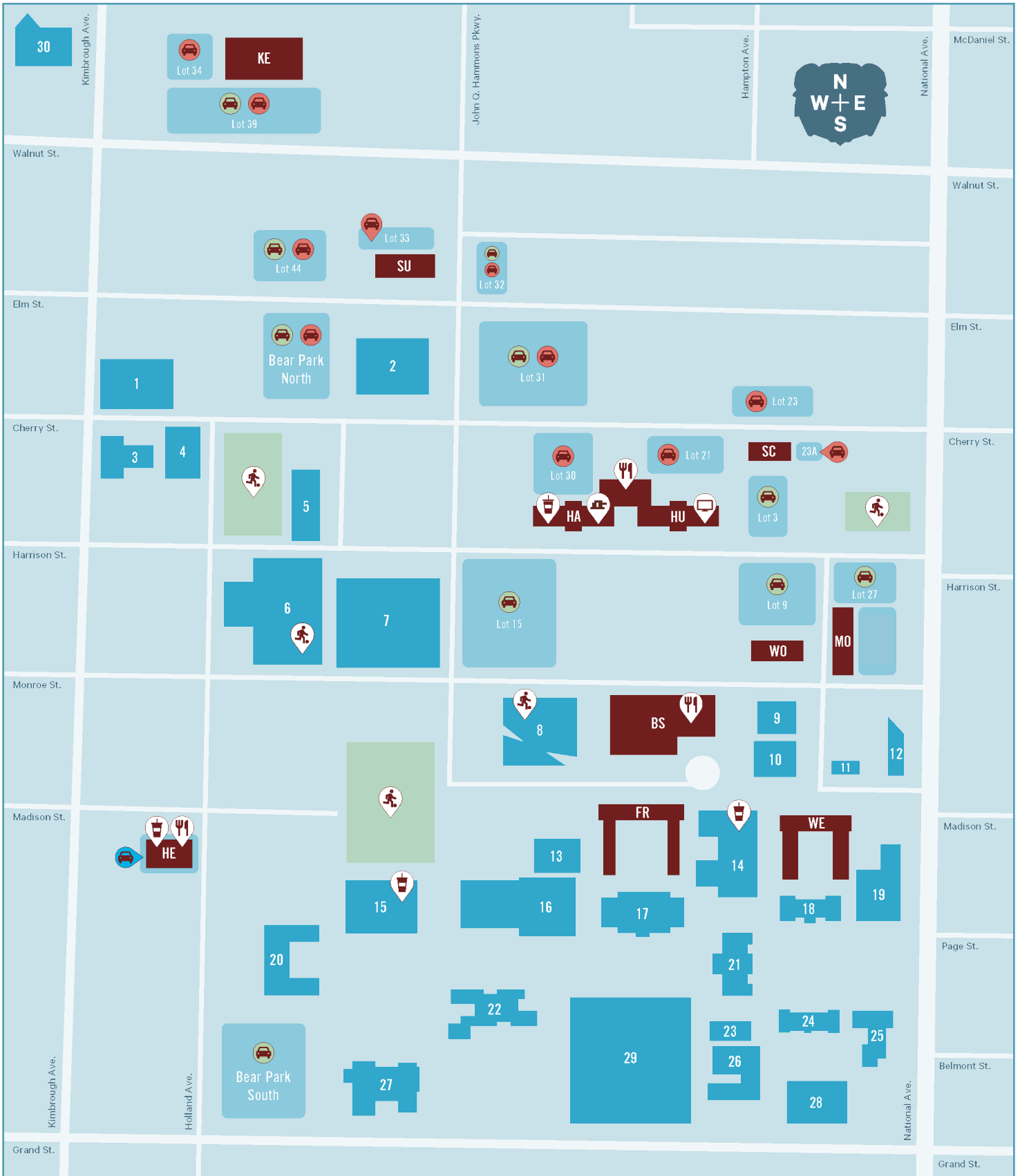
BUILDING NAME	SEATING CAPACITY
Juanita K Hammons Hall for the Performing Arts	2,200
Plaster Student Union Theater	500
Great Southern Bank Arena	11,000
Hammons Student Center	8,800



RECREATION FIELDS & CENTERS

RECREATION SPACE	SPORTS	SEATING CAPACITY
Allison Stadium South	Soccer, Track	1,500
Allison Recreation Fields	Soccer, Sand Volleyball	N/A
Allison North Fields	N/A	N/A
Foster Recreation Center (Indoor)	Basketball, Volleyball, Swimming	N/A
Hammons Student Center (Indoor)	Soccer, Track, Sand Volleyball	8,800

CAMPUS MAP



GET TO KNOW OUR CAMPUS

RESIDENCE HALLS

- BS** Blair-Shannon
🚶‍♀️ Connected to Blair-Shannon Dining Center
- FR** Freddy
- HA** Hammons
🚶‍♀️ Connected to Food Hall at Garst
🚶‍♀️ Connected to Boomer's Convenience
- HE** Heitz
🚶‍♀️ Connected to Heitz Dining Center
🚶‍♀️ Connected to Cafe Market 1905
- HU** Hutchens
🚶‍♀️ Connected to Food Hall at Garst
- KE** Kentwood
- SC** Scholars
- WE** Wells
- WO** Woods

APARTMENTS

- MO** Monroe Apartments
- SU** Sunvilla Apartments



KEY

- 🍴 Dining Center
- 🛒 Retail Vendors
- 🏠 Residence Life Office
- 📖 ResNet Office
- 🚶‍♂️ Recreation Area
- 🚗 Green Permit Parking
- 🚗 Red Permit Parking
- 🚗 Reserved Permit Parking

ACADEMIC BUILDINGS

- 1 Ann Kampeter Health Sciences Hall**
Home of department of biomedical sciences, department of communication sciences and disorders, School of Nursing and department of sports medicine and athletic training.
- 3 McQueary Family Health Sciences Hall**
Home of the department of physical therapy and the master of public health program.
- 4 O'Reilly Clinical Health Sciences Center**
Home of the occupational therapy, physician assistant studies, nursing and nurse anesthesia programs and the MSU Care Clinic.
- 5 Wehr Band Hall**
Home of Missouri State Pride Bands and the University's band and music programs.
- 13 Forsythe Athletics Center**
Home to intercollegiate athletics programs of MSU, Coaches offices, and training rooms.
- 15 Glass Hall**
Home to the College of Business and programs. Einstein Bros Bagels location inside.
- 17 McDonald Hall and Arena**
Home of the exercise science, recreation administration and physical education programs. It also houses studios for the department of theatre and dance.
- 18 Sicheluff Hall**
Home to the department of English.
- 19 Cheek Hall**
Home of the department of mathematics, department of computer science.
- 20 Strong Hall**
Home of the College of Humanities and Public Affairs and programs.
- 22 Roy Blunt Hall**
Home of the College of Natural and Applied Sciences and programs.
- 23 Pummil Hall**
Home of the School of Social Work, department of hospitality and restaurant management.
- 24 Hill Hall**
Home to the College of Education and the department of psychology.
- 25 Ellis Hall**
Home to the department of music.
- 26 Karls Hall**
Home of the William H. Darr College of Agriculture.
- 27 Kemper Hall**
Home to the department of physics, astronomy and materials science, and provides space to the department of technology and construction management.
- 28 Craig Hall**
Home to the department of communication; department of media, journalism and film; and department of theatre and dance.
- 30 Brick City**
Home to the department of art and design, and art programs. Located downtown.

CAMPUS BUILDINGS

- 2 Juanita K. Hammons Hall**
Performing arts theater and venue.
- 6 John Q Hammons Student Center**
Facility that hosts Missouri State University volleyball matches, swim meets, community events and more. It contains a swimming pool, racquetball courts, basketball courts, offices, a lounge area and large varsity locker rooms. The facility is available for recreational use by MSU students, faculty, staff and alumni.
- 7 Great Southern Bank Arena**
Missouri State University basketball arena.
- 8 Bill R Foster and Family Recreation Center**
A place for the entire campus community to work out, play and learn about healthy living. The center includes an indoor jogging track, basketball courts, a fitness center, rock climbing and bouldering walls and lounge areas. It also includes an aquatics center with a large, recreational pool that has lap lanes, underwater seating with hydrotherapy jets, a zip line, a water-current channel and wheelchair accessibility.
- 9 Magers Health and Wellness Center**
The medical home for the Missouri State community. Our medical and professional staff are dedicated to providing quality health and preventive care at minimum cost.
- 10 Missouri State Bookstore**
Official bookstore of Missouri State University.
- 11 University Hall**
Home of several academic offices and programs for student advisement and support including the Honors College and Academic Advisement Center and the Bear Pantry.
- 12 Davis-Harrington Welcome Center**
Primary entrance to Missouri State University and a place to welcome visitors, prospective students and other University guests. The Welcome Center is the designated starting point for campus tours.
- 14 Robert W. Plaster Student Union (PSU)**
Houses food and retail vendors, a theatre, conference and meeting spaces, student organization offices, student service offices and administrative offices, as well as the Bear Cave and Bear Pantry.
- 16 Duane G. Meyer Library**
Main library and the home of the BearCLAW, University Testing Center and the Disability Resource Center. The library offers open and private study spaces along with access to books, online periodicals, newspapers, computer labs and more.
- 21 Carrington Hall**
Main administration building. The office of the president, office of the registrar, office of financial aid, Bursar's office, Graduate College and more are located within this building.
- 29 Robert W. Plaster Stadium**
Home to the Missouri State football team.

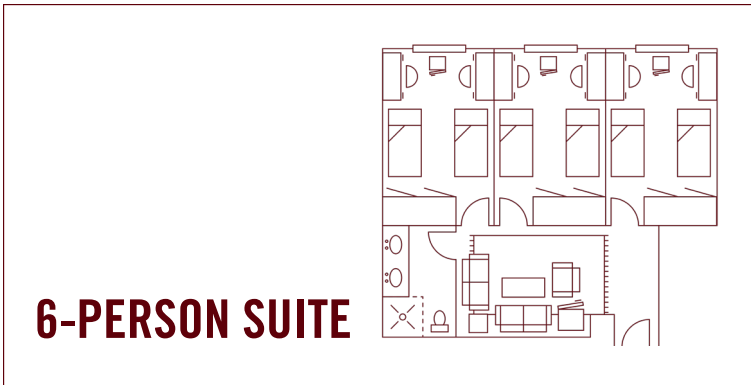


BLAIR- SHANNON

Blair-Shannon House is a two-tower building that houses the second-largest population on campus. The centrally-located residence hall is home to more than 700 students on 15 suite-style floors.

Each suite houses six students in three double-occupancy bedrooms. Each bedroom includes bunkable beds, built-in closet storage and desks. Rooms share an adjoining living area – complete with area rug and lounge furniture – and the en-suite bathroom with a double-sink, shower and toilet.

The Blair-Shannon Dining Center is located on the first floor. The large recreation lounge offers a great place to gather or relax. Residents also have a study space on each floor equipped with dry-erase boards, tables and chairs.

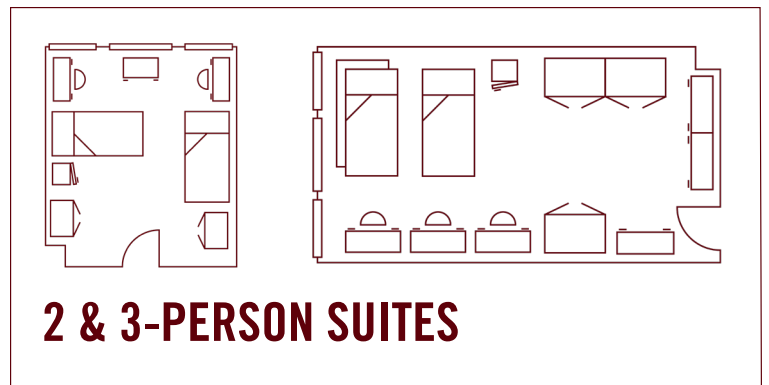


FREDDY HOUSE

Freudenberger, or “Freddy,” is a five-story U-shaped residence hall with two-person and three-person rooms. Freddy houses the largest population on campus, accommodating more than 700 residents in room-style communities.

Each room includes bunkable beds, wardrobes, desks and a chest of drawers. A large community bathroom is located in each hallway with individual shower stalls. Bathrooms are cleaned and fully stocked by our custodial staff.

You’ll love Freddy’s central location, which is just a short walk from many campus amenities like the Plaster Student Union, Foster Recreation Center, and Blair-Shannon Dining Center.



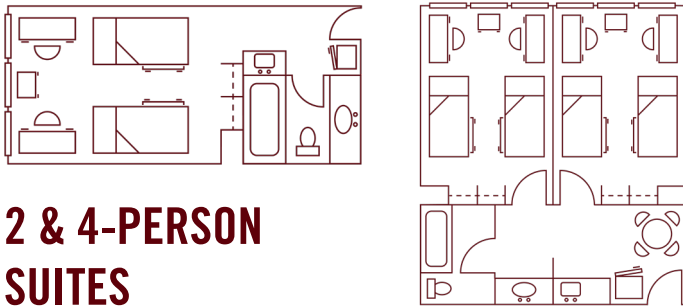


HAMMONS HOUSE

Hammons is an eight-story residence hall that offers two-person and four-person suite-style rooms and houses over 550 students.

Each suite has bunkable beds, open closet spaces, desks, chest of drawers, a kitchenette and an en-suite bathroom complete with a full tub and shower. Four-person suites also include a dining table and chairs.

You don't have to travel far to find food in Hammons; the Food Hall at Garst Dining Center is connected to the building on the first floor. Hammons also features Boomer's Convenience Store, which sells snacks, drinks, BearWear and other convenience items to the campus community.



2 & 4-PERSON SUITES

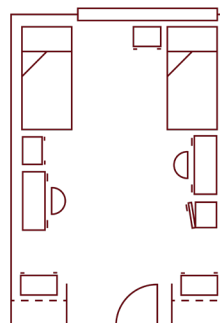
HEITZ HOUSE

Heitz House - our newest building on campus - is a seven-story building that boasts four stories of limited covered parking (at an additional charge) with three stories of living space on top, housing more than 400 students.

Each room includes open closet spaces, loft-style beds, desks and set of drawers for each resident. Single-user private bathrooms with toilets, sinks and showers are located throughout each floor.

Bathrooms are cleaned and fully stocked by our custodial staff.

The first floor of Heitz features a dining center and convenience store. You'll love the spacious interior courtyard and large community spaces for hanging out with friends or studying.



2-PERSON ROOM

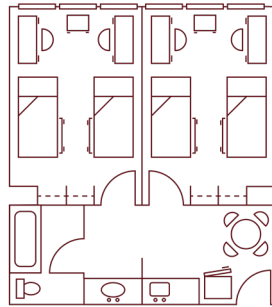
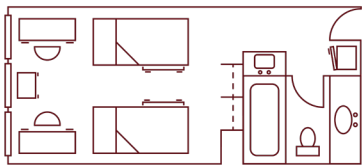


HUTCHENS HOUSE

Hutchens is an eight-story residence hall that offers two-person and four-person suite-style rooms and houses over 550 students.

Each suite has bunkable beds, wardrobes, desks, a chest of drawers, a kitchenette and an en-suite bathroom complete with a full tub and shower. Four-person suites also include a dining table and chairs.

You don't have to travel far to find food in Hutchens; the Food Hall at Garst Dining Center is connected to the building, and just next door in Hammons is Boomer's Convenience Store, which sells snacks, drinks, BearWear and other convenience items to the campus community.



2 & 4-PERSON SUITES

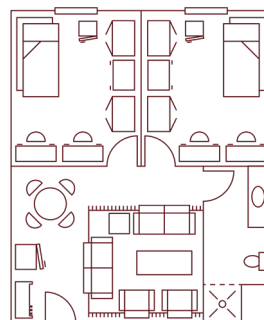
SCHOLARS HOUSE

Scholars is a three-story residence hall that accommodates 115 students in suite-style rooms and is located adjacent to the Food Hall at Garst Dining Center.

Each suite holds two double-occupancy bedrooms with bunkable beds, wardrobes, desks, set of drawers, and a large living area with lounge furniture and an area rug. The en-suite bathroom offers a shower stall and a separate vanity area with additional storage.

All bedrooms have wood-look flooring.

Each floor offers a sizable area for studying. You'll love the large recreation lounge with game tables and a TV area where you can relax or play a game of pool with your friends.



4-PERSON SUITE

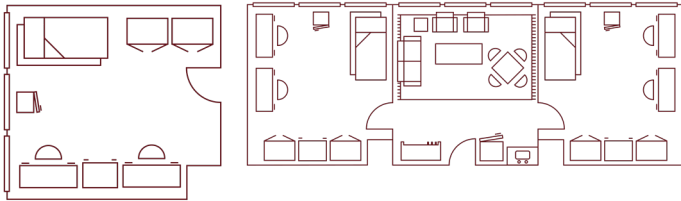


WELLS HOUSE

Wells is a five-story U-shaped building that accommodates more than 475 residents in room- and suite-style living.

Each room offers bunkable beds, wardrobes, desks and a set of drawers. Suitestyle rooms offer two double-occupancy bedrooms and a separate living area with lounge furniture and a kitchenette. A large community bathroom is located on each hallway with individual stalls for showers. Bathrooms are cleaned and fully stocked by our custodial staff.

Wells features a spacious recreation lounge perfect for games or hanging out with friends. You'll love the exterior courtyard located behind the building which is a great place to play ping pong, study, or play yard games.



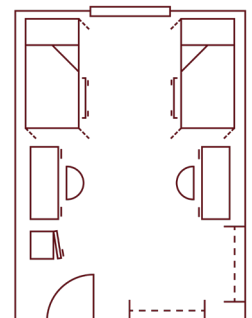
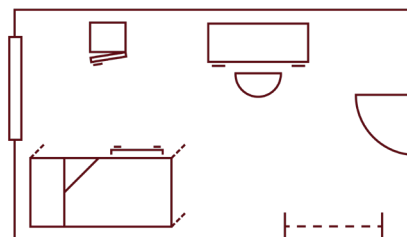
2-PERSON ROOM & 4-PERSON SUITE

WOODS HOUSE

Woods is a 10-story residence hall that houses more than 300 students in room-style communities.

Each room includes open closet spaces, loft-style beds, desks and chest of drawers. Single-user private bathrooms with toilets, showers and sinks are located in each hallway. Bathrooms are cleaned and fully stocked by our custodial staff.

Each floor features a small community TV lounge with modern furniture to hang out with friends or study. You'll enjoy the 10th-floor recreation lounge with game tables, a computer lab, TV lounge, music practice room and gorgeous panoramic views of campus.



1 & 2-PERSON ROOMS

HOUSING AMENITIES

When you stay on campus, we offer several services and amenities to ensure you feel at home during your stay. From laundry to safety, we can offer more than your standard hotel.

LAUNDRY

Laundry rooms are available during your stay in the residence halls. Most washers and dryers are high efficiency (HE) machines, so we recommend bringing HE certified detergent.

WIRELESS INTERNET

On-campus residential guests can connect to our network. You can connect most laptops, desktops, tablets and smart phones to our Wi-Fi network.

COMMUNITY KITCHEN

Every residence hall has a community kitchen, complete with full size refrigerators, ovens, stove tops, and microwaves. Utensils and other kitchen supplies can be checked out from the front desk, to be used in the community kitchen.

COMMUNITY SPACES

Our residence halls have various study and meeting spaces available for use during your stay. Depending on the size of your group and specific needs, we can help you reserve these spaces.

SAFETY INFORMATION

Our campus and residence halls offer an on-campus Springfield police substation, electronic card access entry system, evening Safe Walk service, 24-hour reception desk staffing, and deadbolts and peepholes on all residence hall doors. We expect guests to understand that the safety and security of each residence hall depends in part upon the guests own actions.

Guests are asked to watch out for and protect their “home away from home” and the members of their community. Guests should lock their door(s) behind them when they go out (even if they just go down the hall) and when they are sleeping. Never loan out your key or access card to someone else.

PARKING

Temporary visitor parking permits may be obtained at the parking services office or in advance when you confirm your group and needs.

Parking Services

☎ 417-836-4825

☎ After Hours 417-836-5509

✉ Parking@MissouriState.edu

🌐 MissouriState.edu/Transportation/Parking

*Some amenities come with additional charge and coordinated when you host with us.

DINING DONE RIGHT.

Our campus offers many styles of venues and cuisines from which to choose. With three dining centers, eight retail dining locations, and catering services all at your fingertips, eating well has never been easier.

OUR MISSION

Missouri State University's Dining Services are committed to providing the best on-campus dining experience possible. Our culinary team creates a variety of flavorful food options to fit individual dietary needs with a sustainable dining experience. We are proud of the quality and variety of food that we offer, and strive to exceed expectations.

ALL-YOU-CARE-TO-EAT DINING CENTERS

Blair-Shannon Dining Center, located in Blair-Shannon House, and Heitz Dining Center, located in Heitz House, are buffet-style, all-you-care-to-eat dining centers. One swipe gets you into the dining center where you are able to eat as much as you like in the facility.

There are several different stations that offer various cuisine:

- A station that serves American classics or international cuisine
- A station that serves allergen-friendly menu options that avoid the top nine allergens.
- A grill station that serves grilled favorites
- A pizza and pasta station
- A soup, sandwich and salad bar



FOOD HALL AT GARST DINING CENTER

The Food Hall at Garst Dining Center is connected to Hammons and Hutchens House. With one swipe, you get a ticket for one meal from the concept of your choice, and can even take it to-go! There is also the Extra Extra station that offers fruit and veggie cups, cereal and desserts available for you to add more sides as a bonus to your meal.

Concepts offered include:

- Absurd Bird offers fried chicken strips and fries. This station also offers a breakfast menu
- Smoked offers classic BBQ favorites
- La Mesa offers Latin dishes like burritos, bowls and nachos
- Harrison Street Subs offers made-to-order sandwiches and salads
- Delicious Without offers menus that avoid the top nine allergens
- An international station offers rotating menus throughout the year

View menus and hours online:

New.DineOnCampus.com/MissouriState/whats-on-the-menu

RETAIL DINING

Find these franchise restaurants at various locations around campus like the Plaster Student Union, Heitz House and Glass Hall:



CATERING SERVICES

There are both big decisions and little details to attend to as you prepare for your upcoming event. Let our catering team help you make your gathering memorable and unique to you.

ABOUT US

Our catering team will work with you to create a custom menu inspired by your unique needs that will leave a lasting impression on your guests. All menus will follow the Chartwells culinary philosophy: authentic recipes using the freshest, seasonal ingredients. Our catering services can accommodate any size, theme, or individual requirements, in virtually any location – on or off the Missouri State campus. We will assist you with the entire process, from designing the perfect menu to personalizing all the details of your unique gathering.

Waiter service, buffet, small plates, and internationally inspired specialty stations: all served in your style! If you entrust your event to Missouri State's Catering by Chartwells, the food will be unmatched, the service spectacular, and the event will be unforgettable!

PLAN YOUR EVENT

Our professional staff is available to assist in planning your special event. Please contact our team for customized service and menus Monday through Friday 8:00 A.M. - 5:00 P.M.

Teri Trickey
Catering Director
417-836-4629

Jennifer Ramsey
Catering Manager
417-836-5046

TeriTrickey@MissouriState.edu JRamsey@MissouriState.edu

Learn more:

🌐 DineOnCampus.com/MissouriState

🌐 MissouriState.edu/Conferences/FoodService.htm



QUALITY SERVICE. SINCERE PARTNERSHIP. MEANINGFUL EXPERIENCE.

We take pride in the values-driven standard of excellence to which we hold ourselves to. But don't just take it from us; our partners' experiences speak for themselves.

“

Camps and Conferences housing has been tremendously helpful in past years when we had international groups coming in during the summer for language training programs. Their team was **well-organized** and **prepared** to make check-in smooth. Team members were **responsive** to our group's unique needs. Everyone was **flexible** working around very late arrivals and very early departures. It was great to have this additional level of administrative support for parties, special events, and housing to make our programs dynamic and enjoyable for everyone!

”

Paula Moore

Assistant Vice President

Global Education and Engagement



“

Each year we work with Residence Life for our summer events in the University Bands area. Whether it is our Bands Alive Summer Camps for high school and junior high students, or our camps for our university students in our PRIDE Color Guard, PRIDE Drumline, and PRIDE Band, **our experience with Residence Life is outstanding.** Starting with their reservation system through our stay on campus, we appreciate all that Residence Life staff does to make it a positive experience. The staff is **professional, helpful, trained and accommodating**, and our students walk away from their experience in the residence halls with a positive outlook about Missouri State.

”

John Sullivan

Color Guard Director

Missouri State Pride Bands





Missouri State[®]

U N I V E R S I T Y

CONTACT US:

Event and Meeting Services

901 S. National Ave.
Springfield, MO 65897

 (417) 836-5653

 EventMeetingServices@MissouriState.edu

 MissouriState.edu/Conferences

