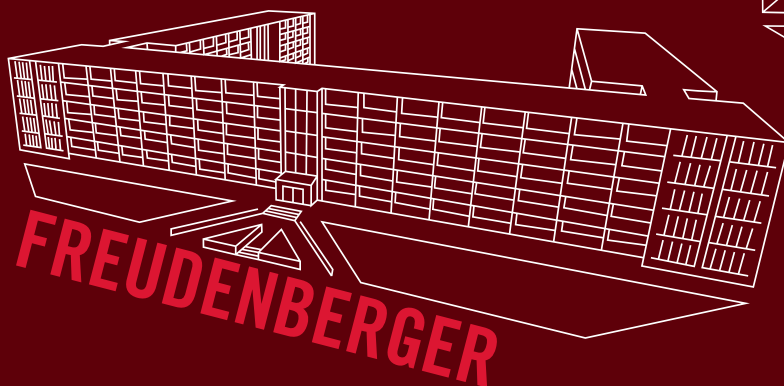
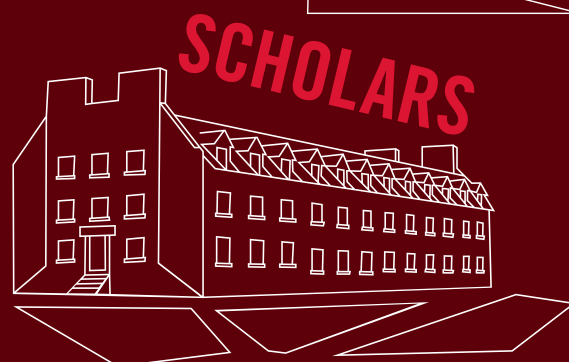
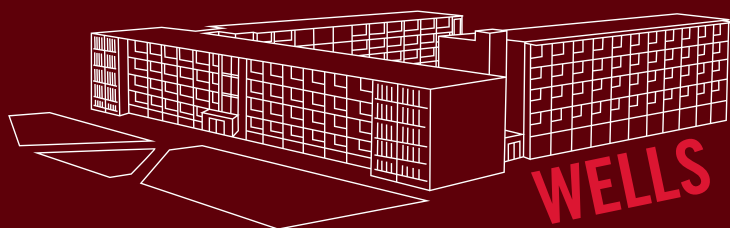
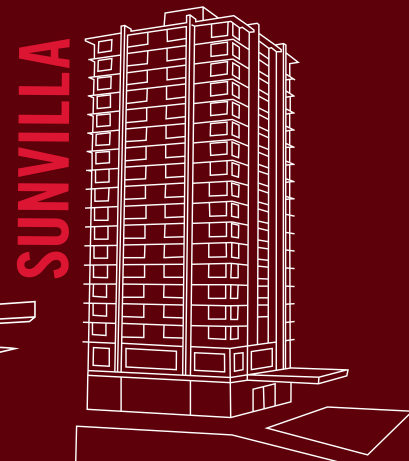
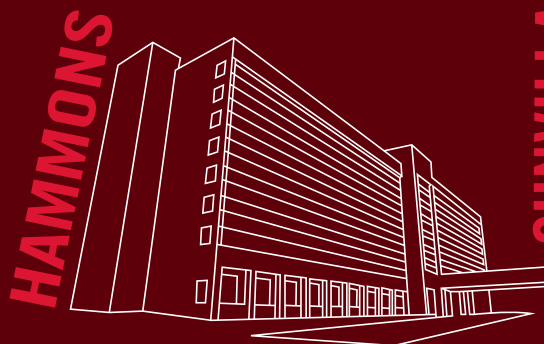
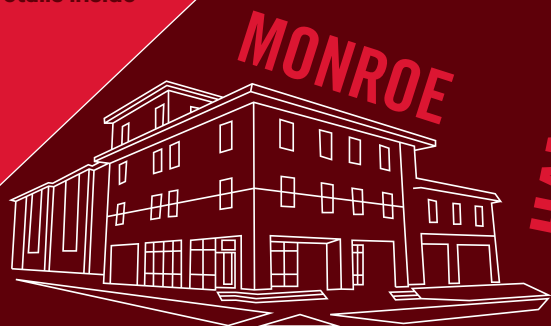


# MISSOURI STATE UNIVERSITY CAMPUS HOUSING GUIDE

THE NEW RESIDENCE HALL  
COMING 2022

Details inside





# WE'RE HERE FOR YOU.

## LIVE LIKE A BEAR.

We understand that moving to a new place may be intimidating, but living on campus will make your transition seamless. Our residence hall communities will help you build relationships that will last a lifetime while providing leadership opportunities, nutritional food options and quiet, comfortable places to study and relax; creating a Missouri State University experience you will remember forever.

On-campus housing is the right choice. You will have the advantage of being close to classes, the library, recreation facilities and the student organizations and events that make campus life rewarding.

**In addition, on-campus students consistently perform academically better than their off-campus peers.**

This housing guide will help you with one of your biggest decisions – determining where to live. We've provided a description of every residence hall and outlined the features that make each one unique. You will also learn about our living-learning communities, dining services and our housing application process.

## IT'S TIME TO THRIVE.



## TABLE OF CONTENTS

2	Hello!
4-5	Blair-Shannon
6-7	Freudenberger
8-9	Hammons
10-11	Hutchens
12-13	Kentwood
14-15	Scholars
16-17	Wells
18-19	Woods
20	Monroe apartments
21	Sunvilla apartments
22	The new residence hall
23	A look around campus
24	Housing rates
25	Residence halls at-a-glance
26	Be a leader
27-29	Living-learning communities
30-31	Dining
32	On-campus resources
33	Welcome to Springfield
34	How to apply for housing
35	Move-in details





# BLAIR-SHANNON



1001 E. Madison St.  
Springfield, MO 65807  
417-836-5196



[ResLife.MissouriState.edu/BlairShannon](https://ResLife.MissouriState.edu/BlairShannon)



@MSUBlairShannon



**TANNER MITCHELL**  
@TANNERM33

Blair has a dining hall downstairs and is really close to campus...  
I can roll out of bed and get to class in 5 min.

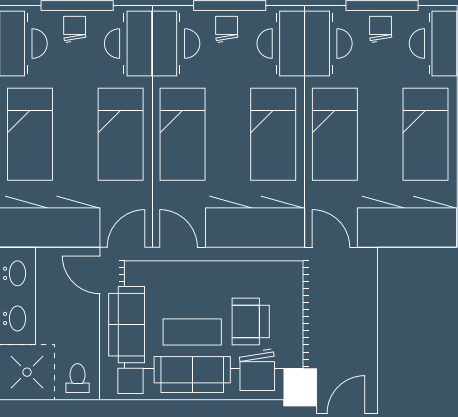


## SPECIAL FEATURES



- Suite-Style
- En-Suite Bathrooms
- Meal Plan Required
- Closed Over Breaks
- Free Laundry on All Floors
- Appliances:
  - Microwave
  - Mid-Size Fridge in Suite
  - Small Fridge in Bedroom
- WiFi & Ethernet
- Community TV Lounge
- Community Kitchen
- Grand Lounge
- 24-Hour Computer Lab
- Bunkable XL Twin Bed
- Dining Center in Building
- Music Practice Room

## ROOM LAYOUT



## 6-PERSON SUITE



## THIS IS BLAIR-SHANNON

Blair-Shannon is a two-tower building that houses the second-largest population on campus. The centrally-located residence hall is home to more than 700 students on 15 suite-style floors. Each suite houses six students in three double-occupancy bedrooms. You will enjoy the adjoining living area – complete with area rug and modern furniture – and the renovated en-suite bathroom with a double-sink vanity and shower.

The Grand Lounge offers a great place to meet, study, relax or play. The Blair-Shannon Dining Center is housed in the same building. Residents also enjoy covered bike racks and a spacious computer lab. Students have ample room to study with designated space set aside on each floor equipped with dry-erase boards, tables and chairs.

700+ STUDENTS

15 FLOORS





# FREUDENBERGER



1000 E. Madison St.,  
Springfield, MO 65807  
417-836-5189



[ResLife.MissouriState.edu/Freddy](https://ResLife.MissouriState.edu/Freddy)



@MsuFreddyHouse



**KAMILA KENDRAN**  
@KAYYYMILA

Freddy's staff is the most amazing group of people I've ever met in my life and the rooms are oh so cozy!

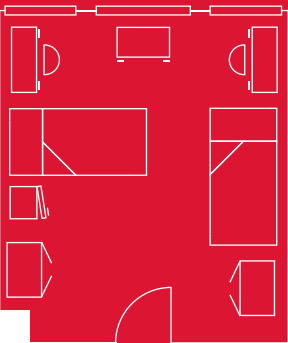


## SPECIAL FEATURES

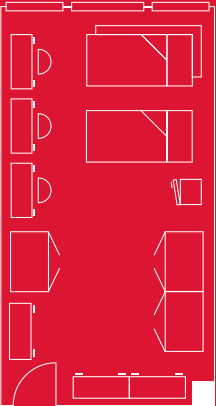


- Room-Style
- Community Bathrooms
- Meal Plan Required
- Closed Over Breaks
- Two Free Laundry Facilities
- Appliances:
  - Microwave
  - Mid-Size Fridge
- WiFi & Ethernet
- Community TV Lounge
- Community Kitchen
- Grand Lounge
- 24-Hour Computer Lab
- Bunkable XL Twin Bed
- Close to Dining Center
- Close to Rec Center
- Grass Courtyard
- Outdoor Ping Pong Table

## ROOM LAYOUTS



2-PERSON ROOM



3-PERSON ROOM



## MEET "FREDDY"

Freudenberg, or "Freddy" is a five-story U-shaped residence hall with two-person and three-person rooms. Freddy houses the largest population on campus, accommodating more than 700 residents in room-style communities.

A large community bathroom is located in each hallway with individual shower stalls. Bathrooms are cleaned and stocked by custodial staff. Students like Freddy's central location, which is just a short walk from many campus amenities.

700+ STUDENTS

5 FLOORS





# HAMMONS



1000 E. Harrison St.  
Springfield, MO 65807  
417-836-4907



[ResLife.MissouriState.edu/Hammons](https://ResLife.MissouriState.edu/Hammons)



@HammonsHouse



**SARAH POLK**  
@S\_POKEE

Hammons is the best. You don't have to walk outside to go to Garst, you have a full-size fridge and an awesome view!

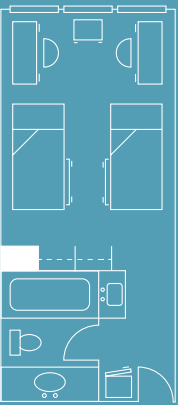


## SPECIAL FEATURES

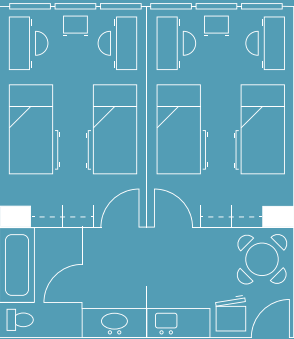


- Suite-Style
- En-Suite Bathrooms
- Meal Plan Required
- Open Over Breaks
- Free Laundry (+Laundry Alert)
- Appliances:
  - Microwave
  - Mid-Size Fridge in 2-Person
  - Full-Size Fridge in 4-Person
- WiFi & Ethernet
- Community TV Lounge
- Community Kitchen
- Grand Lounge
- 24-Hour Computer Lab
- Bunkable XL Twin Bed
- Connected to Dining Center
- Convenience Store
- Wood-look Flooring

## ROOM LAYOUTS



2-PERSON SUITE



4-PERSON SUITE



## HELLO, HAMMONS

Hammons is an eight-story residence hall that offers two-person and four-person suite-style rooms and is attached to Garst Dining Center and Boomer's Convenience Store.

Each suite has wood-look flooring, recently replaced bedroom furniture, a kitchenette and an en-suite bathroom complete with a full tub and shower. Four-person suites also include a dining table and chairs.

Hammons offers Laundry Alert, which indicates how many machines are in use. You can even arrange to receive a text message when your laundry is finished – all from the comfort of your room!

550+ STUDENTS

8 FLOORS





# HUTCHENS



1021 E. Harrison St.  
Springfield, MO 65807  
417-836-8484



[ResLife.MissouriState.edu/Hutchens](https://ResLife.MissouriState.edu/Hutchens)



@Hutchens\_House



**SAMUEL SENN**  
@SAMUELSENN

Hutchens is the best place to live. We have great RAs, large rooms and most importantly, Garst is downstairs!

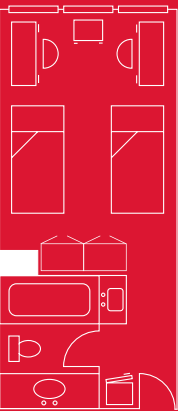


## SPECIAL FEATURES

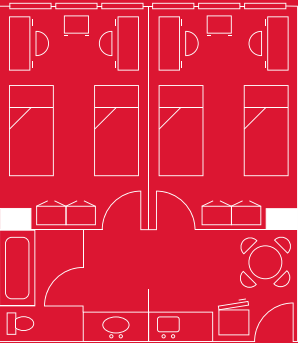


- Suite-Style
- En-Suite Bathrooms
- Meal Plan Required
- Open Over Breaks
- Free Laundry (+Laundry Alert)
- Appliances:
  - Microwave
  - Mid-Size Fridge in 2-Person
  - Full-Size Fridge in 4-Person
- WiFi & Ethernet
- Community TV Lounge
- Community Kitchen
- Grand Lounge
- 24-Hour Computer Lab
- Bunkable XL Twin Bed
- Connected to Dining Center
- Close to Convenience Store
- Music Practice Rooms

## ROOM LAYOUTS



**2-PERSON SUITE**



**4-PERSON SUITE**



## SAY HI TO HUTCHENS

Hutchens is an eight-story residence hall that offers two-person and four-person suite-style rooms and is attached to Garst Dining Center and is close to Boomer's Convenience Store.

Each suite has wood-look flooring, en-suite bathroom complete with a full tub and shower and a kitchenette with sink.

Hutchens offers Laundry Alert, which indicates how many machines are in use. You can even arrange to receive a text message when your laundry is finished – all from the comfort of your room!

550+ STUDENTS

8 FLOORS





# KENTWOOD



700 E. Saint Louis St.  
Springfield, MO 65806  
417-836-4818



[ResLife.MissouriState.edu/Kentwood](https://ResLife.MissouriState.edu/Kentwood)



@KentwoodH



**CAMPBELL KEELE**  
@CAMPBELLKEELE

Kentwood is the best! Because we're a small building, we all quickly become like family. There's no place I'd rather live!

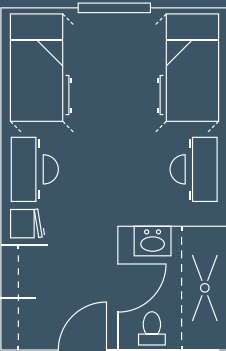


## SPECIAL FEATURES

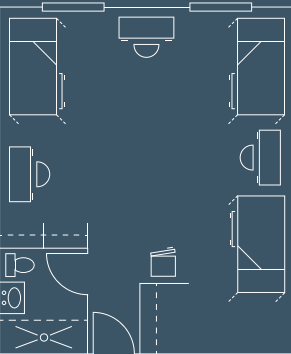


- Suite-Style
- En-Suite Bathrooms
- Meal Plan Required
- Open Over Breaks
- Free Laundry
- Appliances:
  - Microwave
  - Mid-Size Fridge in room
- WiFi & Ethernet
- Community TV Lounge
- Community Kitchen
- Large Study Lounge
- 24-Hour Computer Lab
- Loft-Style XL Twin Bed
- Dining Center in Building
- Close to Downtown Area
- Small Fitness Center

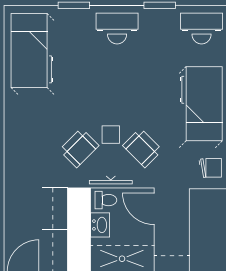
## ROOM LAYOUTS



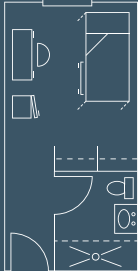
2-PERSON SUITE



3-PERSON SUITE



SUPER DOUBLE SUITE



PRIVATE SUITE



## GET COMFORTABLE AT KENTWOOD

Kentwood Hall is a recently renovated historic six-story building. Kentwood offers private rooms, two-person rooms, super doubles and three-person rooms. Each room is carpeted and offers an en-suite bathroom and adjustable-height loft-style beds; the super doubles include a flat-screen TV and additional seating.

You'll love the large study lounge and community kitchen. Residents of legal drinking age are permitted to have and consume alcohol responsibly. Also, Kentwood is on the BearLine shuttle route, so getting around is a breeze.

100+ STUDENTS

6 FLOORS





# SCHOLARS



1116 E. Cherry St.  
Springfield, MO 65807  
417-836-8787



[ResLife.MissouriState.edu/Scholars](https://ResLife.MissouriState.edu/Scholars)



@ScholarsHouseMo



**LAUREN MCDOWELL**  
@LOLOMCDOWELL84

Scholars House is the best place to live because of the small community atmosphere and our rooms are huge!

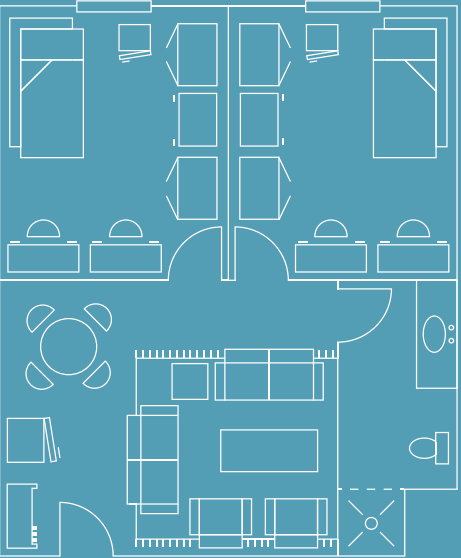


## SPECIAL FEATURES



- Suite-Style
- En-Suite Bathrooms
- Meal Plan Required
- Open Over Breaks
- Free Laundry
- Appliances:
  - Microwave
  - Mid-Size Fridge in Suite
  - Small Fridge in Bedroom
- WiFi & Ethernet
- Community TV Lounge
- Community Kitchen
- Grand Lounge
- 24-Hour Computer Lab
- Bunkable XL Twin Bed
- Adjacent to Dining Center
- Music Practice Rooms

## ROOM LAYOUT



## 4-PERSON SUITE



## SOAR AT SCHOLARS

Scholars is a three-story residence hall that accommodates 115 students in suite-style rooms and is located adjacent to Garst Dining Center.

Each suite holds two double-occupancy bedrooms with movable furniture and a large living area with lounge furniture and an area rug. The en-suite bathroom offers a shower stall and a separate vanity area with additional storage. The bedrooms all have wood-look flooring.

This tight-knit community balances academics with camaraderie and fun. Each floor offers a great and sizeable area for studying. The large student lounge houses game tables and a TV area where you and your friends can watch TV or play a game of pool.

**100+**  
STUDENTS

**3**  
FLOORS





# WELLS



1132 E. Madison St.  
Springfield, MO 65807  
417-836-5193



[ResLife.MissouriState.edu/Wells](https://ResLife.MissouriState.edu/Wells)



@MoStateWells



**ZAC MCCLINTIC**  
@MCCLINTIC13

Living in Wells has been the best experience for me!

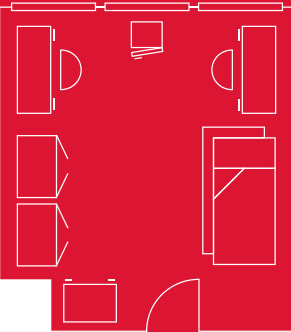


## SPECIAL FEATURES



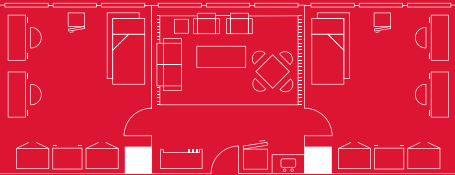
- Suite-Style and Room-Style
- Community Bathrooms
- Meal Plan Required
- Closed Over Breaks
- Free Laundry (+Laundry Alert)
- Appliances:
  - Microwave in Bedroom
  - Mid-Size Fridge
- WiFi & Ethernet
- Community TV Lounge
- Community Kitchen
- Grand Lounge
- 24-Hour Computer Lab
- Bunkable XL Twin Bed
- Adjacent to PSU
- Music Practice Room

## ROOM LAYOUTS



**2-PERSON  
ROOM**

## 4-PERSON SUITE



## WELCOME TO WELLS

Wells is a four-story building that accommodates more than 475 residents in room- and suite-style living.

Each room offers movable furniture. Suite-style rooms offer two double-occupancy bedrooms and a separate living area with lounge furniture and a kitchenette. A large community bathroom is located on each hallway with individual stalls for showers. Bathrooms are cleaned and stocked by custodial staff.

Wells also offers Laundry Alert, which indicates how many machines are in use. You can even arrange to receive a text message when your laundry is finished – all from the comfort of your room!

**475+**  
STUDENTS

**5**  
FLOORS





# WOODS



1115 E. Bear Blvd.  
Springfield, MO 65807  
417-836-5338



[ResLife.MissouriState.edu/Woods](https://ResLife.MissouriState.edu/Woods)



@MsuWoods



BRIANN BIAS

I love Woods because the staff cares so much about our safety.  
I love coming back to my home away from home here!

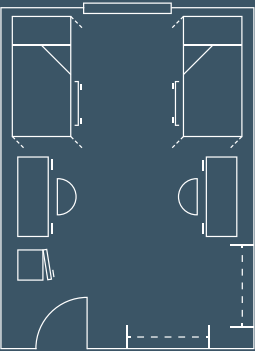


## SPECIAL FEATURES

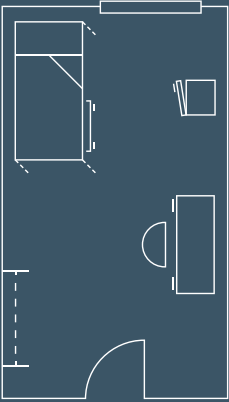


- Room-Style
- Single-User Private Bathrooms
- Meal Plan Required
- Closed Over Breaks
- Free Laundry (+Laundry Alert)
- Appliances:
  - Microwave
  - Mid-Size Fridge in Room
- WiFi & Ethernet
- Community TV Lounges
- Community Kitchen
- 24-Hour Computer Lab
- Loft-Style XL Twin Bed
- Large Recreation Lounge
- Music Practice Room
- Close to Magers Health Center
- Media Room

## ROOM LAYOUT



2-PERSON



1-PERSON



## GET COZY AT WOODS

Woods is a newly-renovated 10-story residence hall that houses more than 300 students in room-style communities.

Each room includes an open closet space, loft-style beds, desks and a chest of drawers. Single-user, private bathrooms with toilets, showers and sinks are located in each hallway. Bathrooms are cleaned and fully stocked by our custodial staff.

You'll love the tight-knit community in Woods. Enjoy the 10th-floor student lounge with panoramic views, a sizable computer lab, TV lounge, music practice room and plenty of space to hang out with friends. You'll also enjoy the outdoor ping pong table and living at the heart of campus.

Woods offers Laundry Alert, which indicates how many machines are in use. You can even arrange to receive a text message when your laundry is finished – all from the comfort of your room!

300+ STUDENTS

10 FLOORS





# MONROE APARTMENTS

## SPECIAL FEATURES

- Home icon
- Apartment icon
- Private Bathrooms
- Meal Plan Optional
- Open Over Breaks
- Free Private Washer/Dryer Set
- Appliances:
  - Microwave, Full-Size Fridge,
  - Stove & Oven, Dishwasher
- WiFi & Ethernet
- 24-Hour Computer Lab
- XL Full or XL Twin Bed
- 10-Month Contract
- Upper-Class Students
- Limited Private Parking
- Close to Magers Health Center

# SUNVILLA APARTMENTS

## SPECIAL FEATURES

- Home icon
- Apartment icon
- Shared Bathroom(s)
- Meal Plan Optional
- Open Over Breaks
- Free Laundry (+Laundry Alert)
- Appliances:
  - Microwave, Full-Size Fridge,
  - Stove & Oven, Dishwasher
- Smart TV in Living Room
- Community TV Lounge
- Community Kitchens
- WiFi & Ethernet
- 24-Hour Computer Lab
- XL Full Bed
- 10-Month Contract
- Upper-Class Students
- Trash & Recycling Pickup
- Indoor Bicycle Storage



1141 E. Bear Blvd.  
Springfield, MO 65807  
417-836-8228



[ResLife.MissouriState.edu/Monroe](https://ResLife.MissouriState.edu/Monroe)



@MoState\_ResLife

Monroe offers four stories of one-, two- and four-bedroom apartments housing students on a 10-month contract. Monroe is only open to upper-class students. There is limited private parking in a lot behind the building. Apartments offer private bedrooms and bathrooms, furnished living rooms, washer and dryer and a kitchen with stainless steel appliances. Residents of legal drinking age are permitted to have and consume alcohol responsibly.

**100+**  
**STUDENTS**



833 E. Elm St.  
Springfield, MO 65806  
417-836-5410



[ResLife.MissouriState.edu/Sunvilla](https://ResLife.MissouriState.edu/Sunvilla)



@MoState\_ResLife

Sunvilla is an 18-story high-rise that accommodates residents in two-, three- and four-person apartments on a 10-month contract. Bedrooms in two- and four-person apartments are shared, while three-person apartments offer one private bedroom and one shared bedroom. Sunvilla offers kitchens with newer appliances, smart TVs, full-size beds and large closets. Residents of legal drinking age are permitted to have and consume alcohol responsibly.

**225+**  
**STUDENTS**



# THE NEW RESIDENCE HALL

## SPECIAL FEATURES

- 2-person bedrooms
- Single-User Private Bathrooms
- Meal Plan Required
- Open Over Breaks
- Free Laundry
- Appliances:
  - Microwave and Fridge
- WiFi & Ethernet
- Community TV Lounge
- 24-Hour Computer Lab
- XL Twin Bed
- First-Year and Upper-Class
- Reserved Garage Parking
- Dining Center and Retail

Coming 2022, we will have a new residence hall. This seven-story building boasts four stories of parking with three stories of living space on top (400 bed spaces).

This building will offer students single-user private bathrooms and great shared community spaces. It will also feature a brand new dining center and retail space on the ground level.



At the corner of Holland and Madison

400+ STUDENTS

# OUR CAMPUS IS BEAUTIFUL



## BEAR TRADITIONS AROUND CAMPUS:

Bear Bash, Homecoming, Fountain Day, May Day, Bear Path and President's Finals Breakfast

## A TASTE OF WHAT'S HAPPENING:

Live music, bingo, comedy and improv shows, board games, movies, pool parties and even puppies to pet!

4,000+ STUDENT RESIDENTS

375+ ORGANIZATIONS



# ON-CAMPUS HOUSING OPTIONS FOR ALL BUDGETS

Housing contracts are for both Fall and Spring semesters. A meal plan and a Dining Dollars package is required when living in room-style or suite-style housing. 2021-2022 rates are below and are subject to change. We offer private rooms when available; call to inquire about availability.

## ROOM-STYLE HOUSING

<i>(Meal Plan and Dining Dollars Package required)</i>	Semester	Yearly
Freudenberger 2 & 3-Person, Wells 2-Person, Woods 2-Person	\$3,057	\$6,114
Woods 1-Person	\$3,603	\$7,206
The New Residence Hall	\$3,386 (projected)	\$6,772 (projected)

## SUITE-STYLE HOUSING

<i>(Meal Plan and Dining Dollars Package required)</i>	Semester	Yearly
Blair-Shannon 6-Person, Kentwood 2 & 3-Person	\$3,386	\$6,772
Hammons or Hutchens 2-Person	\$4,255	\$8,510
Hammons or Hutchens 4-Person	\$3,712	\$7,424
Kentwood 1-Person	\$3,946	\$7,892
Kentwood 2-Person Super Double	\$3,828	\$7,656
Scholars 4-Person	\$3,712	\$7,424
Wells 4-Person Suite	\$3,288	\$6,576

## PRIVATE BED BUY-OUT HOUSING

Private rooms (when available) come at 1.5 times the standard cost. Private rooms are regular, 2-person rooms complete with two sets of furniture. The second set cannot be removed from the space.

<i>(Meal Plan and Dining Dollars Package required)</i>	Semester	Yearly
Blair-Shannon 6-Person	\$5,073	\$10,146
Freudenberger 2-Person, Wells 2-Person, Woods 2-Person	\$4,580	\$9,160
Hammons or Hutchens 2-Person	\$6,377	\$12,754
Hammons 4-Person, Hutchens 4-Person, Scholars 4-Person	\$5,562	\$11,124
Wells 4-Person Suite	\$4,926	\$9,852

## APARTMENT RATES

Apartments are for upperclass and transfer students. Although it is common for students to have a meal plan, they are not required in apartments. Contracts are for the fall and spring semesters. Current apartment students may sign separate contracts for summer.

Monroe Apartment Room Types	Semester Rate	Yearly Rate
1-Person Apartment	\$3,444	\$6,888
2-Person Apartment	\$3,342	\$6,684
4-Person Apartment	\$3,133	\$6,266

Sunvilla Tower Room Types	Semester Rate	Yearly Rate
2-Person Apartment	\$2,945	\$5,890
3-Person Apartment	\$2,817	\$5,634
3-Person Apartment - Private Room/Shared Bath	\$3,072	\$6,144
4-Person	\$2,690	\$5,380

# RESIDENCE HALL FEATURES AT-A-GLANCE

RESIDENCE HALL	Room-Style	Suite-Style	En-Suite Bathrooms	Community Bathrooms	Private Bathrooms	Single-user Private Bathrooms	Meal Plan Required	Open Over Breaks	Community Kitchen	Dining Center Connected to Building	XL Twin Bed   XL Full Bed	Music Practice Room	Free Laundry	24 Hr. Computer Lab	Wi-Fi and Streaming TV	TV Lounge	Microwave & Refrigerator
BLAIR-SHANNON		●	●				●		●	●	●	●	●	●	●	●	●
FREUDENBERGER (“FREDDY”)	●			●			●		●		●		●	●	●	●	●
HAMMONS		●	●				●	●	●	●	●		●	●	●	●	●
HUTCHENS		●	●				●	●	●	●	●	●	●	●	●	●	●
KENTWOOD		●	●				●	●	●	●	●		●	●	●	●	●
SCHOLARS		●	●				●	●	●		●	●	●	●	●	●	●
WELLS	●	●		●			●		●		●	●	●	●	●	●	●
WOODS	●					●	●		●		●	●	●	●	●	●	●
MONROE APARTMENTS					●			●			● ●		●	●	●	●	●
SUNVILLA APARTMENTS			●					●	●		●		●	●	●	●	●
THE NEW RESIDENCE HALL	●					●	●	●	●	●	●		●	●	●	●	●



GLOSSARY

- Room-Style:** Number of students in room is 1-3 students.
- Suite-Style:** Students share a room and small common area with other students.
- En-Suite Bathroom:** The bathroom is attached to the housing unit.
- Community Bathroom:** The bathroom is located down the hall from your room.
- Single-User Private Bathroom:** Centrally located, single-user, full bathrooms with lockable doors, like you would find at home, with additional shared sinks available.
- Private Bathroom:** You have your own bathroom to yourself.
- Meal Plan Required:** Meal plan and Dining Dollars package are required in these buildings.
- Open Over Breaks:** These buildings do not close for winter or spring break; open August through May.
- Community Kitchen:** This building has a common kitchen that residents can use.



# WANT TO LEAD? BE A PART OF SOMETHING BIGGER.

A \$12 activity fee is included in your housing contract each semester to provide funding for social and educational experiences on your floor, in your building and campus wide. Part of this fee also goes to your floor community with which your Resident Assistant plans many engaging experiences.



## RESIDENT ASSISTANT

[ResLife.MissouriState.edu/BecomeAnRa](https://ResLife.MissouriState.edu/BecomeAnRa)

A Resident Assistant (RA) is a student leader housed on each residence hall floor to help with your transition to college life. After your first year, you can become one of these leaders and make a difference for other students by forming meaningful relationships with students on your floor and connecting them to each other and campus resources while building your own leadership skills.

## HALL COUNCIL

[Rha.MissouriState.edu/HallCouncils.htm](https://Rha.MissouriState.edu/HallCouncils.htm)

Hall council is an opportunity for student leaders in each residence hall to influence their community. Hall council students work together to create on-campus events and community service opportunities. Students can become executive board members for their hall councils or represent fellow residents on their floors by becoming floor president.



## RESIDENCE HALL ASSOCIATION

[Rha.MissouriState.edu](https://Rha.MissouriState.edu)

RHA plans events and represents the voice of all on-campus students by recommending policies and procedures. RHA is made up of students from every residence hall and the apartments. Through RHA, you can get involved in a number of leadership positions and committees or attend regional and national leadership conferences.

## NATIONAL RESIDENCE HALL HONORARY

[Organizations.MissouriState.edu/Nrhh](https://Organizations.MissouriState.edu/Nrhh)

The Boomer Bear Chapter of the National Residence Hall Honorary is made up of the top one percent of student leaders in the residence halls. NRHH upholds the values of recognition and service through the “Of the Month” (OTM) program and by engaging with the community through service events.

# LIVING-LEARNING COMMUNITIES BE WITH YOUR PEOPLE.

## WHAT IS AN LLC?

Living-learning communities (LLCs) provide opportunities for you to meet students with similar goals and interests, develop new skills and enhance your experience as a college student. Missouri State University offers fifteen LLCs where students in the specified community live together on a residence hall floor. There are events and activities planned for the members of the LLC catering to the theme of that community.

## WHY CHOOSE AN LLC?

85% of LLC students affirm that they were better able to connect with other students on their floor. As a member of an LLC you can also enjoy:

- Access to exclusive events
- Opportunities for community service
- Connection with faculty, staff and the Springfield community

## Academic Success

The LLC experience will help you to develop academic skills and to be successful inside and outside of the classroom.

## Community Connections

LLCs help you build relationships with faculty, staff, other students and the campus community through a variety of opportunities tailored to fit your interests and area of study.

## Individuality

You will gain an understanding of people different from yourself and perspectives that are different than your own.

## Service

You will establish familiarity with a Springfield community organization and develop a personal understanding of Missouri State University’s public affairs mission through LLC signature events.

## Leadership

You will cultivate leadership skills to be involved as active members of the Springfield and Missouri State communities.



15  
LIVING-LEARNING  
COMMUNITIES FROM  
WHICH TO CHOOSE

91%  
OF LLC STUDENTS SAY  
THEY HAVE BENEFITTED  
FROM THE PROGRAM







**Agriculture**  
DARR COLLEGE OF AGRICULTURE

This group is supported by the Darr College of Agriculture and is perfect for students who have a passion for agriculture. From soil to plants to the animals that eat them, Agriculture Bears will have an opportunity to get hands-on experience with everything from wildlife conservation to business and even communication.



**BearRacks**  
MILITARY SERVICE

Loyalty. Duty. Selfless service. Honor. Integrity. Personal Courage. Students will develop their leadership skills while living with others who are learning what it means to serve. Members of BearRacks will live, take classes, and serve with other students involved with the Military Science Department and the Bear Battalion, Missouri State's ROTC.



**Bears Business Community**  
COLLEGE OF BUSINESS

Students interested in business and leadership opportunities are at home in this LLC. Students have the opportunity to participate in social and educational programs about academics and personal growth and are encouraged to connect with professors outside the classroom.



**Future Educators**  
COLLEGE OF EDUCATION

Students in this LLC are passionate about encouraging the development and education of children and adolescents, and want to share their enthusiasm for learning with others. Live with other like-minded individuals and explore all that Missouri State and the Springfield community have to offer future educators.



**Future Health Care Professionals**  
MCQUEARY COLLEGE OF HEALTH AND HUMAN SERVICES

Students with a declared major in a health care or human services profession are encouraged to live in this LLC. Students have the opportunity to interact with faculty members outside the classroom through events, informal advising and mentoring. Students also have networking opportunities with alumni and local health care employers.



**Global Community**  
CONNECTING THROUGH CULTURE

This community is a global village for students from all over the world, domestic and international. In this LLC, students will make new friends, teach and learn about customs and cultures different than their own while networking and making connections for the future..



**Bears for a Just Community**  
SOCIAL JUSTICE

This community will help students explore several issues related to social justice, diversity and inclusion. Students in this LLC will expand their cultural competence and awareness both as an individual and a community member while developing skills to become a skilled advocate in their own community for a cause that inspires them.



**Bears for Sustainability**  
SUSTAINABLE PRACTICES

Students interested in becoming more responsible citizens through education and community outreach will participate in opportunities that promote sustainable practices. Join the green movement by learning to live sustainably and create positive environmental, social and economic change on a local and global scale.



**Creative Minds**  
ARTS AND CREATIVE EXPRESSION

Students whose passion lies in digital design, animation, film-making, theater, music, photography, painting or writing should look no further than this LLC. All forms of creative expression are valued in this community of aspiring artists and individuals. This LLC will give students opportunities to explore the arts on campus and the Springfield community.

JOIN A TRADITION OF DIFFERENCE MAKERS. 



**First-Year Bears**  
EXPERIENCE

This community is designed to enhance students' first year of college and ease the transition into college life. Students will learn about academic resources and explore the campus and Springfield community with the other first-year students on the floor. Students in this LLC will interact with faculty while getting involved on campus.



**Fit and Well**  
HEALTH AND WELLNESS

An ideal community for students interested in health, wellness, sports and fitness! Explore ways to adopt healthy behaviors on campus while interacting with faculty outside the classroom through events, advising and mentoring. Students will also have the opportunity to participate in events focused on fitness, wellness and health.



**Follow Your Passion**  
FROM PASSION TO CAREER

This community is ideal for first-year students who are exploring which major is right for them or those who would like to utilize their natural curiosity to discover new areas of passion. This LLC includes opportunities to get connected in the Springfield and campus community along with guided activities in selecting a major or career path.



**Honors Community**  
HONORS STUDENTS

This LLC is a home for intellectual engagement with students from a variety of academic areas sharing ideas and learning together. Get connected to the Honors College through regular contact with faculty and staff members in and outside the classroom.



**STEM**  
COLLEGE OF NATURAL AND APPLIED SCIENCES

This LLC is for students interested in careers related to science, technology, math, engineering or pre-health professions. This community gives students opportunities to engage with the Dean and professors outside the classroom. Explore options, find internships and career opportunities and make friends as well!



**Transitions Community**  
TRANSFER STUDENTS

This LLC is for transfer students! Join a community of students who are new to Missouri State but not new to college life. Students have the opportunity to learn about the resources available at MSU, make connections on campus and prepare for the path to graduation.



# WE DO DINING RIGHT

## SHARP MINDS AND STRONG BODIES START WITH HEALTHY AND BALANCED DINING OPTIONS.

Our culinary team creates flavorful food options to sustain body and mind with a unique dining experience. We are proud of the quality and variety we offer our students at Missouri State. Let us know how we can enhance your dining experience – we listen.



### A FOCUS ON WELLNESS AND SUSTAINABILITY

THIS IS THE MISSOURI STATE DINING DIFFERENCE:

- International cuisine options offered daily.
- We use only zero trans-fat oils.
- We support ocean-friendly seafood choices.
- We use only cage-free shell eggs.
- All of our milk is local and free of rBGH and rBST.
- Our chicken products are antibiotic-free.
- We compost and provide campus with nutrient-rich soil.
- We buy fresh food locally whenever possible.
- We're a trayless campus, which uses less water and cleaning chemicals and reduces food waste.
- We use ZipGrow towers to grow herbs and lettuces on campus.
- We clearly label all food with pertinent allergy and health information to help you manage allergies and maintain a balanced diet. Look for these labels in our dining halls:



# DINING DETAILS

## WE HAVE OPTIONS FOR YOU.

### MEAL PLAN PACKAGES

Choose a meal plan and a Dining Dollars package when signing your housing contract. A package with a meal plan and Dining Dollars is required for all residents living on campus (with the exception of Sunvilla Apartments and Monroe Apartments).

Select the number of dining center meals that you want per week:

### MEAL PLAN OPTIONS

MEAL PLAN	SEMESTER	YEARLY
Unlimited Meals per week	\$1,297	\$2,594
19 Meals per week	\$1,212	\$2,424
14 Meals per week	\$1,190	\$2,380
10 Meals per week	\$1,175	\$2,350

\*Rates are subject to change.

### DINING DOLLARS

Dining Dollars are a dollar-for-dollar declining balance plan, similar to a debit account, and are loaded onto your BearPass ID. Those dollars are subtracted from the balance each time a purchase is made. Dining Dollars are accepted at any dining location on campus and carry over from summer to fall and from fall to spring. You also earn bonus dollars depending on the tier that you select.

Select the amount of Dining Dollars that you want per week:

### DINING DOLLARS OPTIONS

YOU PAY	YOU GET	YOU SAVE
\$280	\$307	\$27
\$215	\$236	\$21
\$165	\$181	\$16

### MENUS & HOURS

- Dining Centers are open 7:00 a.m.–7:30 p.m., Monday through Friday.
- Breakfast, Brunch and Dinner are served Saturday and Sunday in the dining centers.
- Late-night dining is offered 9:00 p.m.–11:00 p.m., Sunday through Thursday, at no additional cost to students with student meal plans.
- The Missouri State University mobile app can be used to see daily menus, nutritional information and hours of operation for all of our locations.
- Visit [DineOnCampus.com/MissouriState](https://DineOnCampus.com/MissouriState) to find daily menus, read and leave reviews, interact with social media and more.

### COOKING INSTRUCTION

Free Cooking 101 classes cover general cooking knowledge and special topics like sushi, smoothies or turkey carving!

### PARENTS EAT FREE

Parents eat free in the dining halls when they come to visit. Just bring your parent(s) to your favorite dining hall, let a staff member know when you swipe your BearPass for your meal and their meal is on us.

### RETAIL DINING

Find these franchise restaurants at various locations around campus like the Plaster Student Union, Meyer Library, Glass Hall and Strong Hall.





# ON-CAMPUS RESOURCES

LIVING ON CAMPUS MEANS YOU’RE JUST A SHORT WALK AWAY FROM ALL THAT WE HAVE TO OFFER.

## RESNET

[ResNet.MissouriState.edu](https://resnet.missouri-state.edu)

ResNet serves as the technology hub for on-campus residents. Whether you have issues with your computer, gaming system connection or mobile devices, ResNet is here to help.

All employees have varying backgrounds with computers and most are pursuing degrees and careers related to information technology. Perhaps best of all, ResNet’s services are free to all students living in the residence halls!

### SERVICES OFFERED

- Hardware and software diagnostics and repair
- Assistance in connecting to the University’s networks
- Removal of viruses and malware
- Mobile phone support
- Technology recommendations
- Addressing computer safety issues
- Assistance with a variety of devices
- On-site and room visits for assistance

### TECHNOLOGY AMENITIES

- A 24-hour computer lab in every residence hall
- A dedicated wired Ethernet port for every resident
- Highly secure Wi-Fi connectivity
- 6 gigabit Internet connection service in all buildings
- Smart Home Device Connectivity

## BEAR LINE SHUTTLE

[MissouriState.edu/Transportation](https://missouri-state.edu/Transportation)

MSU offers a free daily shuttle service to and from our campus locations and downtown Springfield. With a wait of only five to 15 minutes, getting around campus has never been easier! You can also track the shuttles in real-time on the Missouri State University Mobile App.

## LGBTQ+ RESOURCE CENTER

[MissouriState.edu/MulticulturalPrograms](https://missouri-state.edu/MulticulturalPrograms)

The LGBTQ+ Resource Center is located in the MRC. Students and staff work in the center and meet with anyone who has questions or has an interest in the LGBTQ+ community. This resource center is free and open to all students, staff and faculty and has an open lounge, smart TV and resource library that are available for student use.

## MULTICULTURAL RESOURCE CENTER

[MissouriState.edu/MulticulturalPrograms](https://missouri-state.edu/MulticulturalPrograms)

The newly renovated MRC is a hub for student community, connection and intercultural exchange. The MRC offers services and resources that are free and open to all students, staff and faculty. Students can access smart TVs, open lounge and meeting spaces, a community kitchen and fridge, computer lab and free printing among many other programs and resources.

## COUNSELING CENTER

[CounselingCenter.MissouriState.edu](https://counselingcenter.missouri-state.edu)

The Counseling Center is free and open to all Missouri State students. Students who are in need of individual or group counseling, consultation or referrals, crisis intervention or educational programming regarding mental wellness are encouraged to take advantage of this resource.

## DISABILITY RESOURCE CENTER

[MissouriState.edu/Disability](https://missouri-state.edu/Disability)

Our Disability Resource Center assists students with a disability to report barriers they encounter and arrange accommodations for campus events, classes and programs. They also lead our campus community in educational efforts regarding this valued aspect of diversity.

## UNIVERSITY SAFETY

[MissouriState.edu/Safety](https://missouri-state.edu/Safety)

We partner with University Safety Officers and a team of Springfield Police Officers at a Springfield police substation on campus. All of our residence halls and apartments have a front desk that is staffed 24 hours a day. All residence halls and apartments use an access card security system that only allows residents to enter the building.

# MORE THAN A COLLEGE TOWN

Springfield



1905





# LET’S GET STARTED

ARE YOU READY TO PURSUE YOUR PASSIONS AND TAKE YOUR PLACE IN A BIGGER WORLD?

## STEP ONE

Get admitted

You can apply for admission beginning August 1. We encourage you to get admitted early and accept your admission offer by paying the \$150 enrollment deposit.

## STEP TWO

Get your meningitis vaccination

Missouri law requires every student residing on campus to document they have received the meningococcal vaccine within five years of enrollment unless a signed statement of medical or religious exemption is on file.

You will need to send this record to Magers Health and Wellness Center to receive a housing assignment.

**Missouri State University**  
**Magers Health & Wellness Center**  
Attn: Medical Records Center  
901 S. National Ave.  
Springfield, MO 65897

✉ [MagersMedicalRecords@MissouriState.edu](mailto:MagersMedicalRecords@MissouriState.edu)  
🌐 [Health.MissouriState.edu](http://Health.MissouriState.edu)  
☎ 417-836-4133

## STEP THREE

Take a tour

Contact Admissions to get a tour of campus and our residence halls. You can also discover more about each of our residence halls on our website. Online you’ll find detailed room specifications for our residence halls that allow you to explore all your housing options. A virtual tour is available at [MissouriState.edu/Visit](http://MissouriState.edu/Visit).



## STEP FOUR

Apply for housing and pay your deposit

Once you have paid your \$100 deposit, met the meningitis requirement and co-signature requirements, your contract will be complete. The date you complete your contract will become the priority date for your housing assignment. You can preference a roommate in the application process. If you don’t have a roommate in mind, we can match you based on how you answer the roommate matching questions on your application.

To get started, decide which LLC and/or residence hall meets your needs, then choose which meal plan and Dining Dollars package you want.

- 🌐 [My.MissouriState.edu](http://My.MissouriState.edu)
- ▶ Log in with your BearPass ID
  - ▶ Click on the Campus Life Tab
  - ▶ Locate the Housing Channel
  - ▶ Click “Complete Application”

## STEP FIVE

Check your email

We will e-mail your housing assignment to your Missouri State e-mail account.

## STEP SIX

Attend SOAR

We’ll see you during your orientation session. Visit the Residence Life, Housing and Dining office in Hammons House 104 or our table at the SOAR Expo if you have any questions. If you selected a living-learning community, stop by the LLC table at the SOAR Expo to meet some of our staff members in the program.

# PREPARE FOR MOVE-IN

DON’T JUST TAKE OUR WORD FOR IT – HERE’S HOW TO MAKE THE MOST OF YOUR FIRST DAYS ON MISSOURI STATE UNIVERSITY’S CAMPUS!

## WHEN CAN YOU MOVE IN?

Fall:

Move-in begins for most students the Friday before the first day of classes. Students moving into a living-learning community have the option (and are encouraged) to move in early before classes begin. Welcome Week events begin when students arrive and take place throughout the entire first week of classes.

Spring:

Move-in begins the Saturday before the first day of classes.



## YOUR TO-DO LIST

BEFORE YOU ARRIVE

1. Find out who your roommates and suitemates are via the Housing Channel: [My.MissouriState.edu](http://My.MissouriState.edu)
2. Talk with your roommates about who’s bringing what
3. Review the “What to bring and what not to bring” list: [MissouriState.edu/Welcome/Packing-List](http://MissouriState.edu/Welcome/Packing-List)
4. Label all of your packed boxes with your name and your room number
5. Download the Missouri State University mobile app and access the Welcome Weekend page in the sidebar menu: [MissouriState.edu/Mobile](http://MissouriState.edu/Mobile)
6. Print off your unloading pass: [MissouriState.edu/Welcome](http://MissouriState.edu/Welcome)






# WE CAN'T WAIT TO MEET YOU!

#LiveLikeABear



## CONTACT

 417-836-5536

 [ResidenceLife@MissouriState.edu](mailto:ResidenceLife@MissouriState.edu)

 [ResLife.MissouriState.edu](http://ResLife.MissouriState.edu)

## CONNECT

 [@MoState\\_ResLife](https://twitter.com/MoState_ResLife)

 [@MoStateResLife](https://www.facebook.com/MoStateResLife)

 [@ResLife\\_MSU](https://www.instagram.com/ResLife_MSU)

 [@ResLifeAtMoState](https://www.youtube.com/ResLifeAtMoState)

Missouri State University adheres to a strict nondiscrimination policy and does not discriminate on the basis of race, color, national origin (including ancestry or any other subcategory of national origin recognized by applicable law), religion, sex, (including marital status, family status, pregnancy, sexual orientation, gender identity, gender expression or any other subcategory of sex recognized by applicable law), age, disability, veteran status, genetic information or any other basis protected by applicable law in employment or in any program or activity offered or sponsored by the University. Sex discrimination encompasses sexual harassment, which includes sexual violence and is strictly prohibited by Title IX of the Education Amendments of 1972.