

MISSOURI STATE UNIVERSITY **CAMPUS HOUSING** **GUIDE**



LIVE LIKE A BEAR

WE'RE HERE FOR YOU

LIVE LIKE A BEAR.

We understand that moving to a new place may be intimidating, but living on campus will make your transition seamless. Our residence hall communities will help you build relationships that will last a lifetime while providing leadership opportunities, nutritional food options and quiet, comfortable places to study and relax; creating a Missouri State University experience you will remember forever.

On-campus housing is the right choice. You will have the advantage of being close to classes, the library, recreation facilities and the student organizations and events that make campus life rewarding.

In addition, on-campus students consistently perform academically better than their off-campus peers.

This housing guide will help you with one of your biggest decisions – determining where to live. We've provided a description of every residence hall and outlined the features that make each one unique. You will also learn about our living-learning communities, dining services and our housing application process.





TABLE OF CONTENTS

1	Contents
2-3	Blair-Shannon House
4-5	Freudenberger House
6-7	Hammons House
8-9	Heitz House
10-11	Hutchens House
12-13	Scholars House
14-15	Wells House
16-17	Woods House
18-19	Kentwood Hall
20-21	Monroe Apartments
22-23	Sunvilla Apartments
24	Housing Rates
25	Residence Halls at-a-glance
26-27	Dining
28	Be a Leader
29-31	Living-Learning Communities
32	ResNet
33	On-Campus Resources
34-35	Campus Map
36	How to Apply for Housing
37	Move-in Details



BLAIR-SHANNON HOUSE



1001 E. Madison St.
Springfield, MO 65807



417-836-5196



ResLife.MissouriState.edu/BlairShannon



700+
STUDENTS

15
FLOORS

THIS IS BLAIR-SHANNON

Blair-Shannon is a two-tower building that houses the second-largest population on campus. The centrally-located residence hall is home to more than 700 students on 15 suite-style floors. Each suite houses six students in three double-occupancy bedrooms. You will enjoy the adjoining living area – complete with area rug and modern furniture – and the recently renovated en-suite bathroom with a double-sink vanity and shower.

The large recreation lounge offers a great place to meet, study, relax or play. The Blair-Shannon Dining Center is housed in the same building. Residents also enjoy covered bike racks and a spacious computer lab. Students have ample room to study with designated space set aside on each floor equipped with dry-erase boards, tables and chairs.

“I like living in Blair-Shannon because it’s super close to everything! I also love my floor community and have made some really great friends.”

- Claire Russell, Shannon Resident

AMENITIES

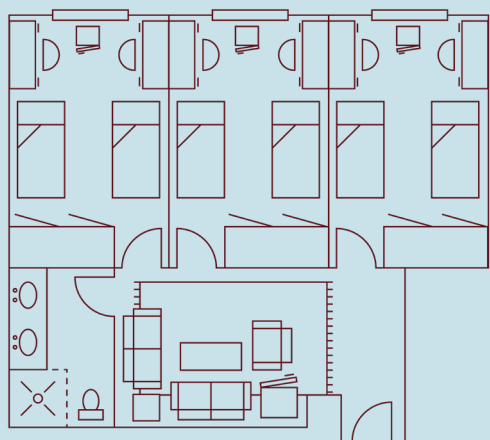
- 🏠 Suite-Style
- 💧 En-Suite Bathrooms
- 🍴 Meal Plan Required
- ☀ Closed Over Breaks
- 👤 Free Laundry on all floors
- 🔌 Appliances:
- 📺 Microwave
- 📺 Mid-Size Fridge in Suite
- 📺 Small fridge in Bedroom

SPECIAL FEATURES

- 📶 Wi-Fi & Ethernet
- 📺 Community TV Lounge
- 🍴 Community Kitchen
- 🛋 Recreation Lounge
- 🕒 24-Hour Computer Lab
- ★ Bunkable XL Twin Bed
- ★ Dining Center in Building
- ★ Music Practice Room



ROOM LAYOUT



6-PERSON SUITE



FREUDENBERGER HOUSE



1000 E. Madison St.
Springfield, MO 65807



417-836-5189



ResLife.MissouriState.edu/Freddy



700+
STUDENTS

5
FLOORS

MEET “FREDDY”

Freudenberger, or “Freddy,” is a five-story U-shaped residence hall with two-person and three-person rooms. Freddy houses the largest population on campus, accommodating more than 700 residents in room-style communities. Each room includes bunkable beds, wardrobes, desks and a chest of drawers.

A large community bathroom is located in each hallway with individual shower stalls. Bathrooms are cleaned and fully-stocked by custodial staff. You’ll like Freddy’s central location, which is just a short walk from many campus amenities.

“I have loved living in Freddy! The location is so convenient and the custodial staff do an amazing job of keeping the building clean.”

- Maycee Nichols, Freddy Resident

AMENITIES

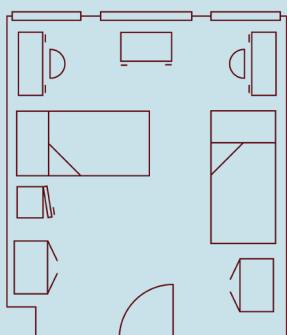
- 🏠 Room-Style
- 💧 Community Bathrooms
- 🍴 Meal Plan Required
- ☀️ Closed Over Breaks
- 👤 Two Free Laundry Rooms
- 🔌 Appliances:
- 🔥 Microwave
- 🧊 Mid-Size Fridge

SPECIAL FEATURES

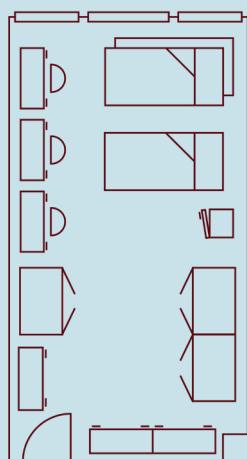
- 📶 Wi-Fi & Ethernet
- 📺 Community TV Lounge
- 🍴 Community Kitchen
- 🎮 Recreation Lounge
- 🕒 24-Hour Computer Lab
- ★ Bunkable XL Twin Bed
- ★ Close to Dining Center
- ★ Piano in Recreation Lounge
- ★ Large Grass Courtyard
- ★ Outdoor Ping Pong Table



ROOM LAYOUTS



2-PERSON ROOM



3-PERSON ROOM



HAMMONS HOUSE



1001 E. Harrison St.
Springfield, MO 65807



417-836-4907



ResLife.MissouriState.edu/Hammons



550+
STUDENTS

8
FLOORS

HELLO, HAMMONS

Hammons is an eight-story residence hall that offers two-person and four-person suite-style rooms and houses over 550 students.

Each suite has bunkable beds, open closet spaces, desks, chest of drawers, a kitchenette and an en-suite bathroom complete with a full tub and shower. Four-person suites also include a dining table and chairs.

You don't have to travel far to find food in Hammons; Garst Dining Center is attached to the building. Hammons also features Boomer's Convenience Store, which sells snacks, drinks, BearWear and other convenient items for the campus community.

"I've enjoyed my time in Hammons meeting new people. I've been able to get out of my shell and grow as a person while living on campus."

- Joshua Anderson, Hammons Resident

AMENITIES

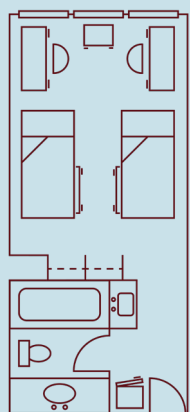
- 🏠 Suite-Style
- 💧 En-Suite Bathrooms
- 🍴 Meal Plan Required
- ☀️ Open Over Breaks
- 👤 Free Laundry
- 🔌 Appliances:
- 📺 Microwave
- 📺 Mid-Size Fridge in 2-Person
- 📺 Full-Size Fridge in 4-Person

SPECIAL FEATURES

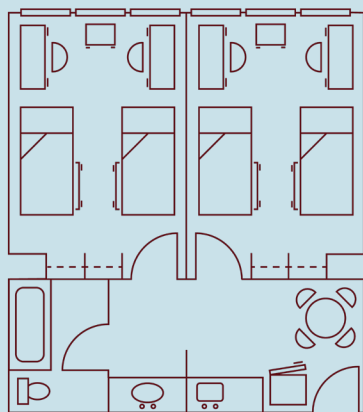
- 📶 Wi-Fi & Ethernet
- 📺 Community TV Lounge
- 🍴 Community Kitchen
- 🛋️ Recreation Lounge
- 💻 24-Hour Computer Lab
- ★ Bunkable XL Twin Bed
- ★ Connected to Dining Center
- ★ Convenience Store
- ★ Wood-look Flooring



ROOM LAYOUTS



2-PERSON SUITE



4-PERSON SUITE



HEITZ HOUSE



811 S. Holland Ave.
Springfield, MO 65806



417-837-7470



ResLife.MissouriState.edu/Heitz



400+
STUDENTS

3
FLOORS

FEEL AT HOME IN HEITZ

Heitz House is our newest building on campus, opening Fall of 2022. This seven-story building boasts four stories of limited covered parking (at an additional charge) with three stories of living space on top, housing more than 400 students.

Each room includes open closet spaces, loft-style beds, desks and set of drawers for each resident. Single-user private bathrooms with toilets, sinks and showers are located throughout each floor. Bathrooms are cleaned and stocked by custodial staff.

The first floor of Heitz features a dining center and convenience store. There is a spacious interior courtyard and lots of community spaces for hanging out with friends or studying.

“Heitz House is very nice and has an awesome courtyard in the middle of the building for outdoor activities and a calm place to study!”

- Hayden Day, Heitz Resident

AMENITIES

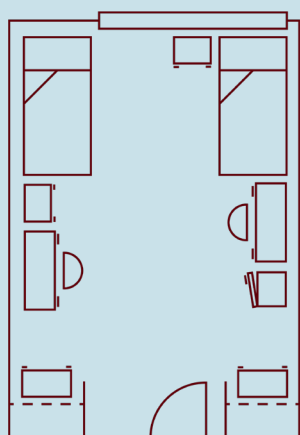
- 🏠 Room-Style
- 💧 Single-User Private Bathrooms
- 🍴 Meal Plan Required
- ☀️ Open Over Breaks
- 👤 Free Laundry on all floors
- 🔌 Appliances:
- 🔥 Microwave
- 🧊 Mid-size Fridge

SPECIAL FEATURES

- 📶 Wi-Fi & Ethernet
- 📺 Community TV Lounges
- 🍴 Community Kitchen
- 🛋️ Recreation Lounge
- 🕒 24-Hour Computer Lab
- ★ Loft-Style XL Twin Bed
- ★ Reserved Garage Parking
- ★ Dining Center on First Floor
- ★ Retail Center on First Floor
- ★ Interior Courtyard



ROOM LAYOUT



2-PERSON ROOM



HUTCHENS HOUSE



1021 E. Harrison St.
Springfield, MO 65807



417-836-8484



ResLife.MissouriState.edu/Hutchens



550+
STUDENTS

8
FLOORS

SAY HI TO HUTCHENS

Hutchens is an eight-story residence hall that offers two-person and four-person suite-style rooms and is attached to Garst Dining Center and close to Boomer's Convenience Store.

Each suite has bunkable beds, wardrobes, desks, a chest of drawers, a kitchenette and an en-suite bathroom complete with a full tub and shower. Four-person suites also include a dining table and chairs.

You don't have to travel far to find food in Hutchens; Garst Dining Center is attached to the building. Hutchens is close to Boomer's Convenience Store, which sells snacks, drinks, BearWear and other convenient items for the campus community.

"Living in Hutchens has been a great experience. I have met a lot of new friends I wouldn't have if I didn't live on campus."
- Caleb Thomas, *Hutchens Resident*

AMENITIES

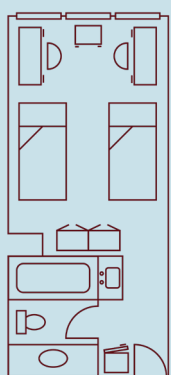
- 🏠 Suite-Style
- 💧 En-Suite Bathrooms
- 🍴 Meal Plan Required
- ☀️ Open Over Breaks
- 👤 Free Laundry
- 🔌 Appliances:
- 📺 Microwave
- 📺 Mid-Size Fridge in 2-Person
- 📺 Full-Size Fridge in 4-Person

SPECIAL FEATURES

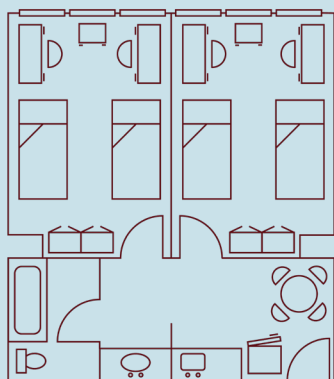
- 📶 Wi-Fi & Ethernet
- 📺 Community TV Lounge
- 🍴 Community Kitchen
- 🎮 Recreation Lounge
- 💻 24-Hour Computer Lab
- ★ Bunkable XL Twin Bed
- ★ Connected to Dining Center
- ★ Close to Convenience Store
- ★ Wood-look Flooring
- ★ Music Practice Rooms



ROOM LAYOUTS



2-PERSON SUITE



4-PERSON SUITE



SCHOLARS HOUSE



1116 E. Cherry St.
Springfield, MO 65807



417-836-8787



ResLife.MissouriState.edu/Scholars



100+
STUDENTS

3
FLOORS

SOAR AT SCHOLARS

Scholars is a three-story residence hall that accommodates 115 students in suite-style rooms and is located adjacent to Garst Dining Center.

Each suite holds two double-occupancy bedrooms with bunkable beds, wardrobes, desks, set of drawers, and a large living area with lounge furniture and an area rug. The en-suite bathroom offers a shower stall and a separate vanity area with additional storage. All bedrooms have wood-look flooring.

Each floor offers a great and sizable area for studying. The large recreation lounge houses game tables and a TV area where you and your friends can watch TV or play a game of pool.

“I’m so happy I chose to live in Scholars. It’s a great place to have fun and spend time with friends, but also sit down and study.”

- William Morris, *Scholars Resident*

AMENITIES

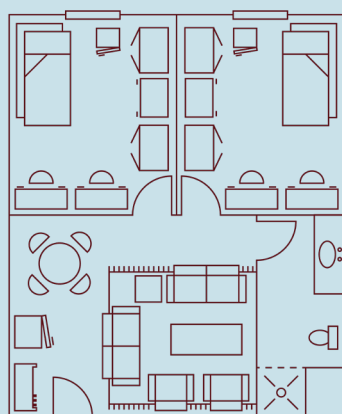
- 🏠 Suite-Style
- 💧 En-Suite Bathrooms
- 🍴 Meal Plan Required
- ☀️ Open Over Breaks
- 🧺 Free Laundry
- 🔌 Appliances:
- 📺 Microwave
- 📺 Small Fridge in Bedroom
- 📺 Mid-Size Fridge in Suite

SPECIAL FEATURES

- 📶 Wi-Fi & Ethernet
- 📺 Community TV Lounge
- 🍴 Community Kitchen
- 🛋️ Recreation Lounge
- 🕒 24-Hour Computer Lab
- ★ Bunkable XL Twin Bed
- ★ Adjacent to Dining Center
- ★ Wood-look Flooring
- ★ Music Practice Rooms
- ★ Piano in Recreation Lounge



ROOM LAYOUT



4-PERSON SUITE



WELLS HOUSE



1132 E. Madison St.
Springfield, MO 65807



417-836-5193



ResLife.MissouriState.edu/Wells



475+
STUDENTS

5
FLOORS

WELCOME TO WELLS

Wells is a five-story building that accommodates more than 475 residents in room- and suite-style living.

Each room offers bunkable beds, wardrobes, desks and a set of drawers. Suite-style rooms offer two double-occupancy bedrooms and a separate living area with lounge furniture and a kitchenette. A large community bathroom is located on each hallway with individual stalls for showers. Bathrooms are cleaned and stocked by custodial staff.

Wells features a spacious recreation lounge perfect for games or hanging out with friends. The exterior courtyard located behind the building is also a great place to play ping pong or study.

“Wells is awesome; everyone is so nice and welcoming, especially my RA. I would recommend living on campus to new and returning students!”

- Molly Crawford, Wells Resident

AMENITIES

- 🏠 Suite-Style and Room-Style
- 💧 Community Bathrooms
- 🍴 Meal Plan Required
- ☀️ Closed Over Breaks
- 👤 Free Laundry
- 🔌 Appliances:
- 🔥 Microwave
- 🧊 Mid-Size Fridge

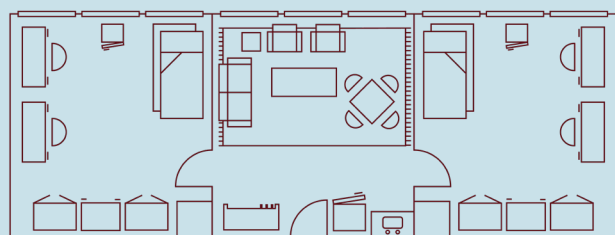
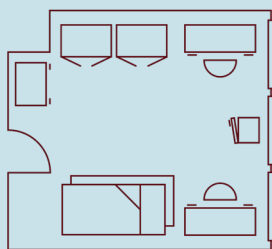
SPECIAL FEATURES

- 📶 Wi-Fi & Ethernet
- 📺 Community TV Lounge
- 🍴 Community Kitchen
- 🛋️ Recreation Lounge
- 🕒 24-Hour Computer Lab
- ★ Bunkable XL Twin Bed
- ★ Adjacent to PSU
- ★ Music Practice Room
- ★ Outdoor Ping Pong Table



ROOM LAYOUTS

2-PERSON ROOM



4-PERSON SUITE



WOODS HOUSE



1115 E. Bear Blvd.
Springfield, MO 65807



417-836-5338



ResLife.MissouriState.edu/Woods



300+
STUDENTS

10
FLOORS

GET COZY AT WOODS

Woods is a recently-renovated 10-story residence hall that houses more than 300 students in room-style communities. Each room includes open closet spaces, loft-style beds, desks and chest of drawers. Single-user private bathrooms with toilets, showers and sinks are located in each hallway. Bathrooms are cleaned and fully stocked by our custodial staff.

Enjoy the 10th-floor recreation lounge with panoramic views, a computer lab, TV lounge, music practice room and plenty of space to hang out with friends.

“Woods House is clean, fun and has a great environment. Living on campus is convenient and I’m always close to my classes.”

- Hannah Hoffmann, Woods Resident

AMENITIES

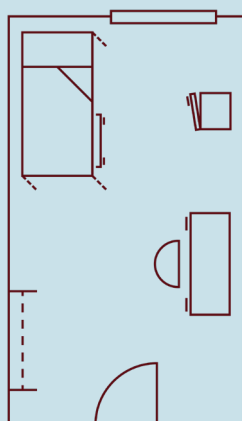
- 🏠 Room-Style
- 💧 Single-User Private Bathrooms
- 🍴 Meal Plan Required
- ☀️ Closed Over Breaks
- 👤 Free Laundry
- 🔌 Appliances:
- 📺 Microwave
- 📺 Mid-Size Fridge

SPECIAL FEATURES

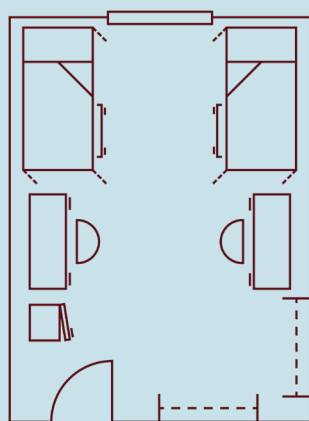
- 📶 Wi-Fi & Ethernet
- 📺 Community TV Lounge
- 🍴 Community Kitchen
- 🎮 Recreation Lounge
- 🕒 24-Hour Computer Lab
- ★ Loft-Style XL Twin Bed
- ★ Music Practice Room
- ★ Media Room
- ★ Outdoor Ping Pong Table
- ★ TV Lounge on all floors



ROOM LAYOUTS



1-PERSON ROOM



2-PERSON ROOM



KENTWOOD HALL



700 E. Saint Louis St.
Springfield, MO 65806



417-836-4818



ResLife.MissouriState.edu/Kentwood



100+
STUDENTS

6
FLOORS

GET COMFORT AT KENTWOOD

Kentwood Hall is a renovated historic six-story building. Kentwood offers private rooms, two-person rooms, super doubles and three-person rooms. Each room is carpeted and offers an en-suite bathroom and adjustable-height loft-style beds; the super doubles include a flat-screen TV and additional seating. Kentwood is only open to upper-class and transfer students.

You'll love the large study lounge and Kentwood's proximity to Downtown. Residents of legal drinking age are permitted to have and consume alcohol responsibly. Also, Kentwood is on the Bear Line shuttle route, so getting around is a breeze.

"Kentwood is the best! Because we're a small building, we all quickly become like family. There's no place I'd rather live!"
- Campbell Keele, Kentwood Resident

AMENITIES

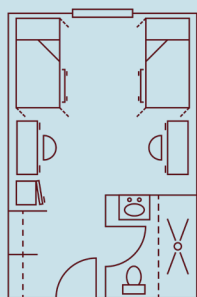
- 🏠 Suite-Style
- 💧 En-Suite Bathrooms
- 🍽️ Meal Plan Required
- ☀️ Open Over Breaks
- 👤 Free Laundry
- 🔌 Appliances:
- 📺 Microwave
- 🧊 Mid-Size Fridge in Room

SPECIAL FEATURES

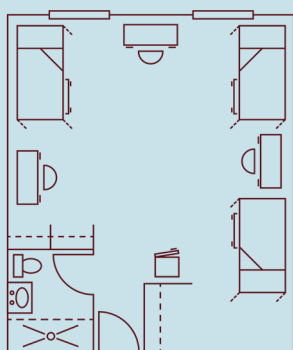
- 📶 Wi-Fi & Ethernet
- 📺 Community TV Lounge
- 🍽️ Community Kitchen
- 💻 24-Hour Computer Lab
- ★ Large Study Lounge
- ★ Loft-Style XL Twin Bed
- ★ Small Fitness Center
- ★ Close to Downtown



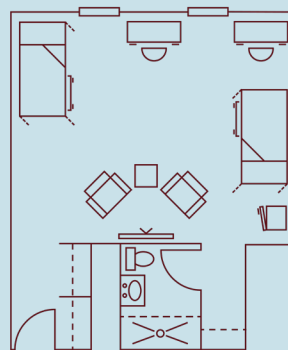
ROOM LAYOUTS



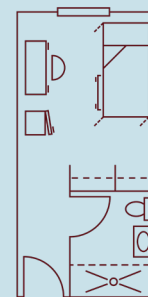
2-PERSON SUITE



3-PERSON SUITE



SUPER DOUBLE SUITE



PRIVATE SUITE

MONROE APARTMENTS



1141 E. Bear Blvd.
Springfield, MO 65807



417-836-8228



ResLife.MissouriState.edu/Monroe



100+
STUDENTS

4
FLOORS

MAKE IT YOURS IN MONROE

Monroe offers four stories of one-, two- and four-bedroom apartments housing students on an academic year contract, with summer contracts available upon request. Monroe is only open to upper-class students.

Apartments feature private bedrooms and bathrooms, furnished living rooms, washer and dryer and a kitchen with stainless steel appliances. There is limited private parking in a lot behind the building (at an additional charge). Residents of legal drinking age are permitted to have and consume alcohol responsibly.

“Monroe provides great on-campus community as well as the apartment experience of being an upperclassman and living on your own.”

- Corrina Trimble, Monroe Resident

AMENITIES

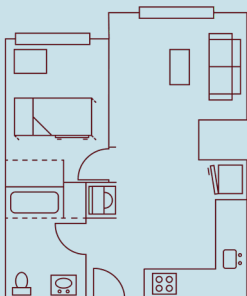
- 🏠 Apartments
- 💧 Private Bathrooms
- 🍽️ Meal Plan Optional
- ☀️ Open Over Breaks
- 🚿 En-Suite Washer/Dryer Set
- 🔌 Appliances:
- 📺 Microwave
- 🚪 Full-Size Fridge
- ★ Stove and Oven, Dishwasher

SPECIAL FEATURES

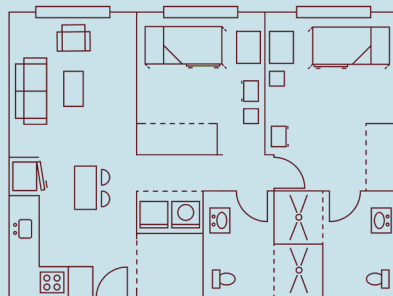
- 📶 Wi-Fi & Ethernet
- 📺 Community TV Lounge
- 🕒 24-Hour Computer Lab
- ★ XL Full or XL Twin Bed
- ★ Academic Year Contract
- ★ Upper-Class Students
- ★ Limited Private Parking
- ★ Close to Magers Health Center



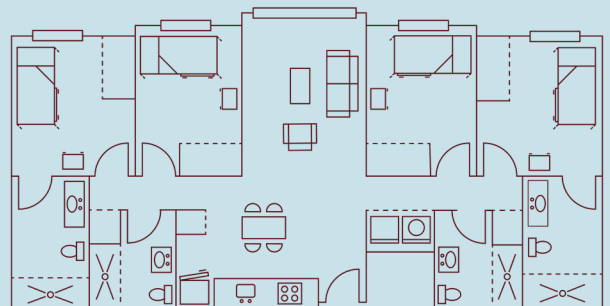
ROOM LAYOUTS



1-PERSON



2-PERSON



4-PERSON

SUNVILLA APARTMENTS



833 E. Elm St.
Springfield, MO 65806



417-836-5410



ResLife.MissouriState.edu/Sunvilla



225+
STUDENTS

18
FLOORS

SETTLE IN AT SUNVILLA

Sunvilla is an 18-story high-rise that offers residents two-, three- and four-person apartments on an academic year contract, with summer contracts available upon request. Sunvilla is only open to upper-class students.

Bedrooms in two- and four-person apartments are shared, while three-person apartments offer one private bedroom and one shared bedroom. Sunvilla offers kitchens with newer appliances, smart TVs, full-size beds and large closets. Residents of legal drinking age are permitted to have and consume alcohol responsibly.

“Sunvilla Tower is THE place to live. The rooms and facilities are amazing and the staff is awesome!”

- Emily Eigenmann, Sunvilla Resident

AMENITIES

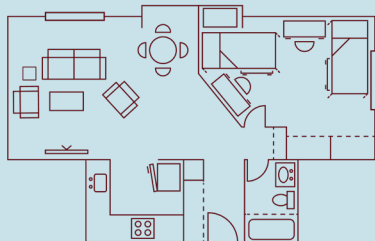
- 🏠 Apartments
- 💧 Shared En-Suite Bathrooms
- 🍴 Meal Plan Optional
- ☀️ Open Over Breaks
- 👤 Free Laundry
- 🔌 Appliances:
- 📺 Microwave
- 📺 Full-Size Fridge
- ★ Stove & Oven, Dishwasher
- ★ Smart TV in Living Room

SPECIAL FEATURES

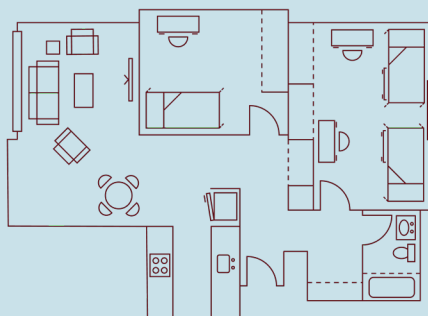
- 📶 Wi-Fi & Ethernet
- 📺 Community TV Lounges
- 📺 Recreation Lounge
- 🕒 24-Hour Computer Lab
- ★ XL Full Bed
- ★ 10-Month Contract
- ★ Upper-Class Students
- ★ Indoor Bicycle Storage



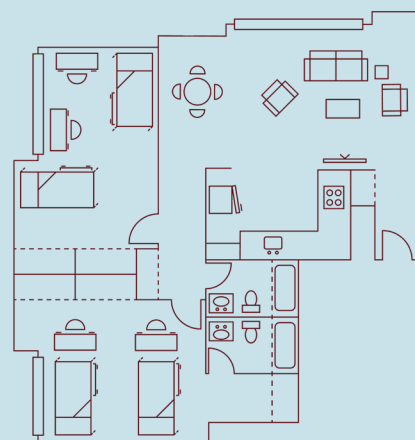
ROOM LAYOUTS



2-PERSON



3-PERSON



4-PERSON

ON-CAMPUS HOUSING OPTIONS FOR ALL BUDGETS

Housing contracts are for both Fall and Spring semesters. A Meals-Per-Week and a Dining Dollars plan is required when living in room-style or suite-style housing. 2024-2025 rates are below and are subject to change. We offer private rooms when available; call to inquire about availability.

ROOM-STYLE HOUSING

<i>(Meal Plan Package required)</i>	Bathroom	Semester	Yearly
Freudenberger 2 & 3-Person	Community-Style	\$3,383	\$6,766
Heitz 2-Person	Single-User Private	\$3,727	\$7,454
Wells 2-Person	Community-Style	\$3,383	\$6,766
Woods 1-Person	Single-User Private	\$3,989	\$7,978
Woods 2-Person	Single-User Private	\$3,383	\$6,766

SUITE-STYLE HOUSING

<i>(Meal Plan Package required)</i>	Bathroom	Semester	Yearly
Blair-Shannon 6-Person	En-Suite	\$3,727	\$7,454
Hammons or Hutchens 2-Person	En-Suite	\$4,711	\$9,422
Hammons or Hutchens 4-Person	En-Suite	\$4,110	\$8,220
Kentwood 1-Person	En-Suite (Private)	\$4,369	\$8,738
Kentwood 2 and 3-Person	En-Suite	\$3,749	\$7,498
Kentwood 2-Person Super Double	En-Suite	\$4,239	\$8,478
Scholars 4-Person	En-Suite	\$4,110	\$8,220
Wells 4-Person Suite	Community-Style	\$3,640	\$7,280

PRIVATE BED BUY-OUT HOUSING

Private rooms (when available) come at 1.5 times the standard cost. Private rooms are regular, 2-person rooms complete with two sets of furniture. The second set cannot be removed from the space.

<i>(Meal Plan Package required)</i>	Semester	Yearly
Blair-Shannon 6-Person	\$5,585	\$11,170
Freudenberger 2-Person, Wells 2-Person, Woods 2-Person	\$5,069	\$10,138
Hammons or Hutchens 2-Person	\$7,061	\$14,122
Hammons, Hutchens, Scholars 4-Person	\$6,159	\$12,318
Heitz 2-Person	\$5,585	\$11,170
Wells 4-Person	\$5,454	\$10,908

APARTMENT RATES

Apartments are for upper-class and transfer students. Although it is common for students to have a meal plan, they are not required in apartments. Contracts are for the fall and spring semesters. Current apartment students may sign separate contracts for summer.

Monroe Apartment Room Types	Bathroom	Semester Rate	Yearly Rate
1-Person Apartment	Private	\$3,759	\$7,518
2-Person Apartment	Private	\$3,648	\$7,296
4-Person Apartment	Private	\$3,419	\$6,838

Sunvilla Tower Room Types	Bathroom	Semester Rate	Yearly Rate
2-Person Apartment	En-Suite	\$3,214	\$6,428
3-Person Apartment	En-Suite	\$3,075	\$6,150
3-Person Apartment - Private Room/Shared Bath	En-Suite	\$3,353	\$6,706
4-Person	En-Suite	\$2,926	\$5,852

RESIDENCE HALL FEATURES AT-A-GLANCE

RESIDENCE HALL	Room-Style	Suite-Style	En-Suite Bathrooms	Community Bathrooms	Private Bathrooms	Single-user Private Bathrooms	Meal Plan Required	Open Over Breaks	Community Kitchen	Dining Center Connected to Building	XL Twin Bed XL Full Bed	Music Practice Room	Free Laundry	24-Hr. Computer Lab	Wi-Fi and Streaming TV	TV Lounge	Microwave & Refrigerator
BLAIR-SHANNON		●	●				●		●	●	●	●	●	●	●	●	●
FREUDENBERGER ("FREDDY")	●			●			●		●		●		●	●	●	●	●
HAMMONS		●	●				●	●	●	●	●		●	●	●	●	●
HEITZ	●					●	●	●	●	●	●		●	●	●	●	●
HUTCHENS		●	●				●	●	●	●	●	●	●	●	●	●	●
KENTWOOD		●	●				●	●	●		●		●	●	●	●	●
SCHOLARS		●	●				●	●	●		●	●	●	●	●	●	●
WELLS	●	●		●			●		●		●	●	●	●	●	●	●
WOODS	●					●	●		●		●	●	●	●	●	●	●
MONROE APARTMENTS					●			●			● ●		●	●	●	●	●
SUNVILLA APARTMENTS			●					●	●		●		●	●	●	●	●



GLOSSARY

Room-Style: Number of students in room is 1-3 students.

Suite-Style: Students share a room and small common area with other students.

En-Suite Bathroom: The bathroom is attached to the housing unit.

Community Bathroom: The bathroom is located down the hall from your room.

Single-User Private Bathroom: Centrally located, single-user, mostly full bathrooms with lockable doors, like you would find at home, with additional shared sinks available.

Private Bathroom: You have your own bathroom to yourself.

Meal Plan Required: Meal plan and Dining Dollars package are required in these buildings.

Open Over Breaks: These buildings do not close for Thanksgiving, winter or spring break; open Aug. – May.

Community Kitchen: This building has a common kitchen that residents can use.

WE DO DINING RIGHT

WITH FLEXIBLE AND CONVENIENT DINING OPTIONS.

DINING AT MISSOURI STATE

Our culinary team creates flavorful food options to fit individual dietary needs with a sustainable dining experience. We are proud of the quality and variety we offer our students at Missouri State. Let us know how we can enhance your dining experience – we listen.

A FOCUS ON OPTIONS AND DIETARY NEEDS

THIS IS THE MISSOURI STATE DINING DIFFERENCE:

- We clearly label food with pertinent allergy and health information to help you manage allergies and maintain a balanced diet. Look for these labels in our dining halls:

AG Avoiding Gluten **P** Contains Pork **PR** Good Source of Protein
VG Vegan **V** Vegetarian **CF** Climate Friendly

- We can accommodate any dietary need, and our chef is always available to have a conversation about your personal needs.
- Our menus rotate daily, so there is always something new to try and you never get bored.
- Dining centers offer:
 - A station that serves meals that avoid the top 9 allergens
 - A station that serves international cuisine or American classics
 - A pizza and pasta station
 - A grill station that serves burgers, hot dogs and fries
 - A soup, sandwich and salad bar



Scan here for detailed daily menus, nutritional information and hours of operation.



DineOnCampus.com/MissouriState

DINING DETAILS

WE HAVE OPTIONS FOR YOU.

MEAL PLAN PACKAGES

A complete Meal Plan package consists of both Meals-Per-Week and Dining Dollars. A Meal Plan package is required when living in room-style or suite-style housing, but optional for students living in Sunvilla and Monroe.

MEALS-PER-WEEK

Meals-Per-Week plans can be used at any of our three dining centers: Blair-Shannon, Garst, and Heitz. Each time a student visits, a meal is deducted from their weekly balance using their BearPass Student ID. The weekly swipes resets every Monday morning before breakfast. Meals-Per-Week plans can be lowered during the first three weeks of each semester, and increased at any time.

OPTIONS

MEAL PLAN	SEMESTER	YEARLY
10 Meals-per-week	\$1,418	\$2,836
14 Meals-per-week	\$1,437	\$2,874
19 Meals-per-week	\$1,463	\$2,926
Unlimited Meals-per-week	\$1,566	\$3,132

**Rates are for the 2024-2025 academic year*

DINING DOLLARS

Dining Dollars are a declining balance plan, similar to a debit account, loaded on a student's account once at the beginning of each semester. Each time a purchase is made, those dollars are subtracted from the balance on their BearPass Student ID. Dining Dollars are accepted at any dining location on campus and carry over from summer to fall and from fall to spring. Each plan below comes with an amount of bonus dollars!

OPTIONS

YOU PAY	BONUS	YOU GET
\$192	\$18	\$210
\$242	\$23	\$265
\$310	\$30	\$340

STARSHIP

Our campus was the first in Missouri to roll out Starship food delivery services. Order from almost any on-campus location, and a Starship robot will deliver it to your building within minutes!



DINING CENTERS

- Dining centers open 7:00 a.m.-7:30 p.m., Monday through Friday. Select dining centers serve Breakfast, Brunch and Dinner, Saturday and Sunday.
- Blair-Shannon and Heitz Dining Centers offer all-you-can eat dining.
- This Fall 2024, we will be launching the Food Hall at Garst Dining Center! With one meals-per-week swipe, you get a ticket for one meal from the concept of your choice, and can even take it to-go! There will also be grazing stations with fruit, cereal, and desserts available to eat as much as you'd like.



RETAIL DINING

Find these franchise restaurants at various locations around campus like the Plaster Student Union, Heitz House and Glass Hall:



WANT TO LEAD? BE A PART OF SOMETHING BIGGER.

A \$12 activity fee is included in your housing contract each semester to provide funding for social and educational experiences on your floor, in your building and campus wide. Part of this fee also goes to your floor community with which your Resident Assistant plans many engaging events.

RESIDENCE HALL ASSOCIATION

Rha.MissouriState.edu

RHA plans events and represents the voice of all on-campus students by recommending events, services, policies and procedures. RHA is made up of students from every residence hall and the apartments. Through RHA, you can get involved in a number of leadership positions and committees or attend regional and national leadership conferences.



HALL COUNCIL

Rha.MissouriState.edu/HallCouncils.htm

Hall council is an opportunity for student leaders in each residence hall to influence their community. Hall council members work together to create on-campus events and community service opportunities. Students can become executive board members for their hall councils or represent fellow residents on their floors by becoming floor president.



NATIONAL RESIDENCE HALL HONORARY

Organizations.MissouriState.edu/Nrhh

The Boomer Chapter of the National Residence Hall Honorary exists to provide recognition for students who have demonstrated important leadership skills. NRHH upholds the values of recognition and service through the "Of the Month" (OTM) program and by engaging with the community through service events.



RESIDENT ASSISTANT

ResLife.MissouriState.edu/BecomeAnRa

A Resident Assistant (RA) is a student leader housed on each residence hall floor to help with your transition to college life. After your first year, you can become one of these leaders and make a difference for other students by forming meaningful relationships with students on your floor and connecting them to each other and campus resources while building your own leadership skills.



LIVING-LEARNING COMMUNITIES

JOIN A TRADITION OF DIFFERENCE MAKERS.

A photograph of four students working in a garden. In the foreground, a student in a red shirt is planting a seedling in a raised bed. Behind them, three other students in teal shirts are also working. The garden has various plants, including yellow flowers and green leafy vegetables. A grey metal railing is visible in the background.

WHAT IS AN LLC?

Living-learning communities (LLCs) provide opportunities for you to meet students with similar goals and interests, develop new skills and enhance your experience as a college student. Missouri State University offers fifteen LLCs where students in the specified community live together on a residence hall floor. There are events and activities planned for the members of the LLC catering to the theme of that community.

WHY CHOOSE AN LLC?

88% of LLC students affirm that they were better able to connect with other students on their floor. As a member of an LLC you can also enjoy connection with faculty, staff and the Springfield community.

ACADEMIC COMMUNITIES

COMMUNITIES BASED ON ACADEMIC MAJOR



Agriculture

DARR COLLEGE OF AGRICULTURE

This LLC is perfect for students who have a passion for all areas of agriculture. From soil to plants to the animals that eat them, Agriculture Bears will have an opportunity to get hands-on experience with everything from wildlife conservation to business and even communication.



Bears Business Community

COLLEGE OF BUSINESS

This LLC is ideal for students interested in business and leadership opportunities. Students have the opportunity to participate in social and educational programs related to academics, professional development and personal growth. Students will have internship opportunities as well as tours to local businesses and service to the community.



Future Educators

COLLEGE OF EDUCATION

Students in this LLC are passionate about encouraging the development and education of children and adolescents. This community is designed for students intending to be teachers or pursue a career in the field of education. Live with other like-minded individuals, and explore all that MSU and Springfield have to offer future professionals.



Future Health Care Professionals

MCQUEARY COLLEGE OF HEALTH AND HUMAN SERVICES

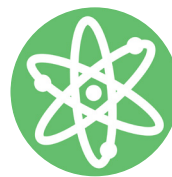
This LLC is an ideal living community for those interested in a health care or human services profession. Students have the opportunity to attend events that allow them to connect with faculty, alumni or local health care professionals or organizations.



Honors Community

HONORS STUDENTS

Honors Community is a home for intellectual engagement with students from a variety of academic areas sharing ideas and learning together. Get connected to the Honors College through regular contact with faculty and staff members inside and outside the classroom.



STEM

COLLEGE OF NATURAL AND APPLIED SCIENCES

This LLC is perfect for those interested in science, math or engineering. Students participate in hands-on learning, tours and outreach. This community gives students the opportunity to engage with the Dean and professors outside of the classroom. Explore options, find internships and make friends!



THEME COMMUNITIES

COMMUNITIES BASED ON THEMATIC INTEREST



Bears for a Just Community

SOCIAL JUSTICE

Become an advocate and make a difference. Expand your cultural competence and awareness as an individual and as a member of a community. Explore issues like homelessness and poverty, access, immigration, LGBTQ+ rights and health care. Members expand their social and moral development as individuals and as a community.



Bears for Sustainability

SUSTAINABLE PRACTICES

Students will become environmentally responsible citizens through education and community outreach opportunities that promote sustainability. Join the green movement by learning to live sustainability and create positive environmental, social and economic change on a local and global scale.



Creative Minds

ARTS AND CREATIVE EXPRESSION

This LLC is a community for students who are creative and want to live with like-minded creators. Major events have included a talent showcase, "craft-ernoons," art workshops and opportunities to see performances and shows around Springfield.



First-Year Bears

EXPERIENCE

This community is designed to enhance each student's first year of college and help ease the transition into college life. Students will learn about academic resources and explore the campus and Springfield community with other first-year students. In addition, students interact with faculty and staff members in a relaxed setting outside the classroom.



Fit and Well

HEALTH AND WELLNESS

This is an ideal community for students interested in health, wellness, sport and fitness opportunities on campus, as well as exploring ways to adopt lifelong healthy behaviors. Students will have the opportunity to participate in activities and experiences focusing on fitness, wellness and overall health.



Finding Your Path

FROM PASSION TO CAREER

Explore academic options at MSU in a fun, creative way. Students can also explore which major is right for them or discover new areas of passion within their current major or future career plans. Through active hands-on learning, students can discover how individual passions relate to different majors and career choices.



Leadership

LEARNING TO LEAD

The Leadership LLC is a new community geared toward students who have an interest in all things leadership. This will focus on exploring leadership styles, identifying strengths and networking with campus and community leaders.



Global Community

CONNECTING THROUGH CULTURE

Students from around the world call our Global Community home. Make lifelong friends, share your culture and learn about others, and network for your future in an increasingly globalized world.



Transfer Bears

TRANSFER STUDENTS

This LLC is for transfer students! Make your Missouri STATEment through shared experiences with other transfer students by joining community of students who are new to the University but not new to college. Learn about Missouri State and Springfield while making lasting campus connections and prepare for the path to graduation.

RESNET

RESIDENTIAL TECHNICAL SUPPORT FOR YOU

RELY ON RESNET

ResNet.MissouriState.edu

ResNet serves as the technology hub for on-campus residents. Whether you have issues with your computer, gaming system, mobile devices, or network connection trouble, ResNet is here to help. All employees have varying backgrounds with computers and most are pursuing degrees and careers related to information technology. Perhaps best of all, ResNet's services are free to all students living in the residence halls!



TECHNOLOGY SUPPORT SERVICES


ResNet is here to help you with your technology troubles! Having issues connecting your device to the university Wi-Fi or printers? Need to diagnose or repair a problem with your hardware or software? Just looking for a recommendation on what laptop is the best for school? Call or submit a request online and our team will help you over the phone or make a visit to your room to help you in-person.

PRINTING

Each residence hall has a front desk printer that residents can use for free. Every resident is given 350 pages to print per semester (double-sided pages only count as one page). Students will also be able to print at Meyer Library and other campus computer labs. Residents can bring their own personal printers, but wireless printers are not allowed.



 Hutchens House Basement

 417-836-6100

 ResNet.MissouriState.edu

RESNET

RESIDENTIAL TECHNICAL SUPPORT

SERVICES OFFERED

- Hardware and software diagnostics and repair
- Assistance connecting to the University's networks
- Removal of viruses and malware
- Mobile phone support
- Technology recommendations
- Addressing computer safety issues
- On-site and room visits for assistance

TECHNOLOGY AMENITIES

- A 24-hour computer lab in every residence hall
- A dedicated wired Ethernet port for every resident
- Highly secure Wi-Fi connectivity
- 6 gigabit Internet connection service in all buildings
- Smart Home Device Connectivity
- Free TV streaming and Max subscription



ON-CAMPUS RESOURCES

YOU HAVE SUPPORT WHEN YOU LIVE ON CAMPUS.

BEAR LINE SHUTTLE

MissouriState.edu/Transportation

MSU offers a free daily shuttle service to and from our campus locations and downtown Springfield. With a wait of only five to 15 minutes, getting around campus has never been easier! You can also track the shuttles in real-time on the Missouri State University Mobile App.

COUNSELING CENTER

CounselingCenter.MissouriState.edu

The Counseling Center is free and open to all Missouri State students. Students who are in need of individual or group counseling, consultation or referrals, crisis intervention or educational programming regarding mental wellness can take advantage of these resources in person or online.

MULTICULTURAL RESOURCE CENTER

MissouriState.edu/MulticulturalPrograms

The newly renovated MRC is a hub for student community, connection and inter-cultural exchange. The MRC offers services and resources that are free and open to all students. Students can access smart TVs, open lounge and meeting spaces, a community kitchen and fridge, computer lab and free printing among other programs and resources.

LGBTQ+ RESOURCE CENTER

MissouriState.edu/MulticulturalPrograms

The LGBTQ+ Resource Center, located in the MRC, employs students and staff who meet with anyone who has questions about or an interest in the LGBTQ+ community. This resource center is free and open to all students. It also features the Transitions Closet, where people can donate clothing for students who need access to gender affirming clothes.

UNIVERSITY SAFETY

MissouriState.edu/Safety

We partner with University Safety Officers and a team of Springfield Police Officers at a Springfield police substation on campus. All of our residence halls have a front desk that is staffed 24 hours a day. All residence halls use an access card system that allows only residents to enter the building.

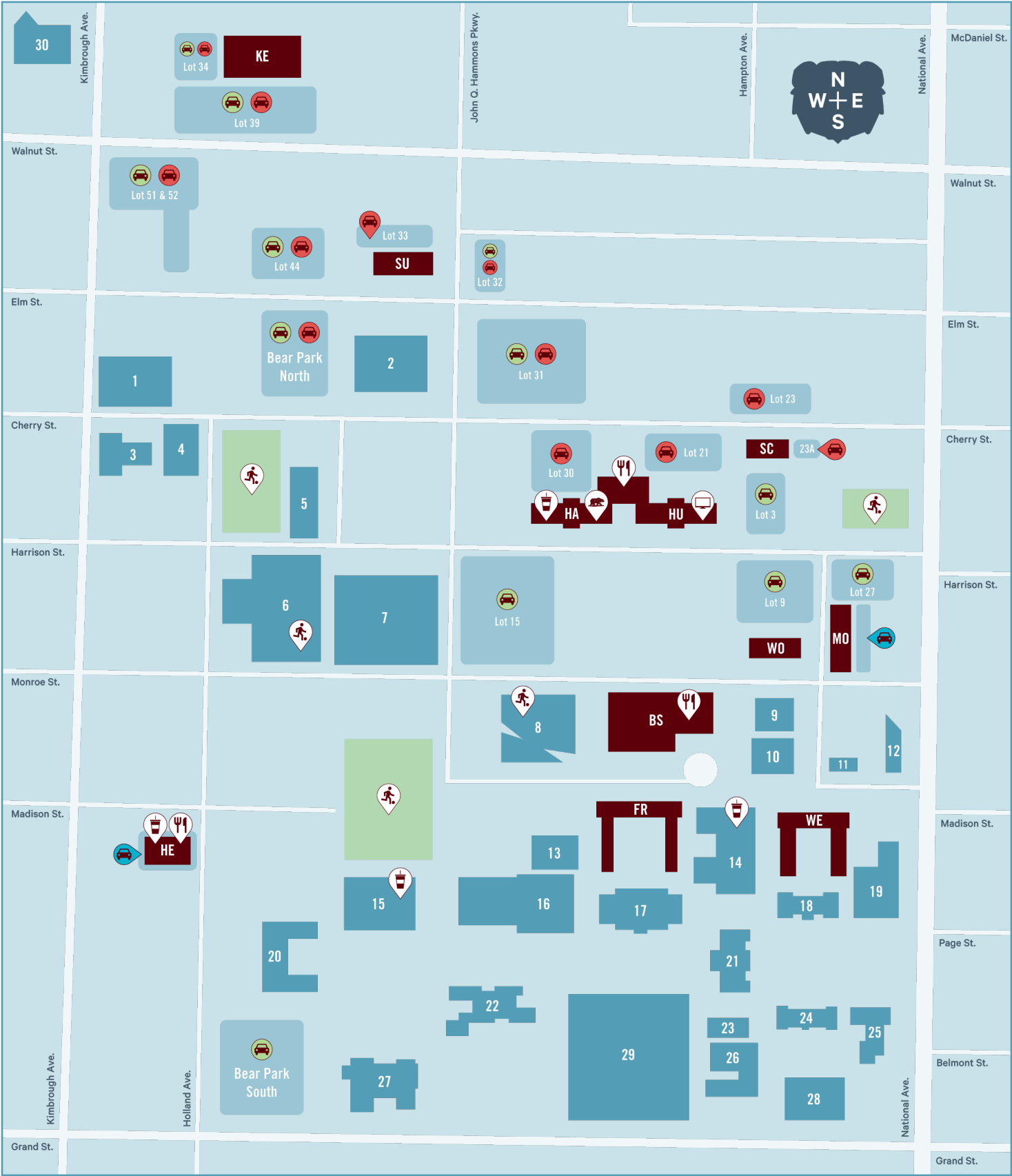
DISABILITY RESOURCE CENTER

MissouriState.edu/Disability

Our Disability Resource Center assists students with a disability to report barriers they encounter and arrange accommodations for campus events, classes and programs. They also lead our campus community in educational efforts regarding this valued aspect of inclusion.

CAMPUS MAP







WHERE WILL YOU CHOOSE TO LIVE?



GET TO KNOW OUR CAMPUS

YOUR COMMUNITY IS ALWAYS CLOSE WHEN YOU LIVE ON CAMPUS.

RESIDENCE HALLS








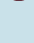
- BS** Blair-Shannon
 Connected to Blair-Shannon Dining Center
- FR** Freddy
- HA** Hammons
 Connected to Garst Dining Center
 Connected to Boomer's Convenience
- HE** Heitz
 Connected to Heitz Dining Center
 Connected to Cafe Market 1905
- HU** Hutchens
 Connected to Garst Dining Center
- KE** Kentwood
- SC** Scholars
- WE** Wells
- WO** Woods

APARTMENTS


- MO** Monroe Apartments
- SU** Sunvilla Apartments











KEY

-  Dining Center
-  Retail Vendors
-  Residence Life Office
-  ResNet Office
-  Recreation Area
-  Green Permit Parking
-  Red Permit Parking
-  Reserved Permit Parking

ACADEMIC BUILDINGS

- 1 Ann Kampeter Health Sciences Hall**
Home of department of biomedical sciences, department of communication sciences and disorders, School of Nursing and department of sports medicine and athletic training.
- 3 McQueary Family Health Sciences Hall**
Home of the department of physical therapy and the master of public health program.
- 4 O'Reilly Clinical Health Sciences Center**
Home of the occupational therapy, physician assistant studies, nursing and nurse anesthesia programs and the MSU Care Clinic.
- 5 Wehr Band Hall**
Home of Missouri State Pride Bands and the University's band and music programs.
- 13 Forsythe Athletics Center**
Home to intercollegiate athletics programs of MSU, Coaches offices, and training rooms.
- 15 Glass Hall**
Home to the College of Business and programs. Einstein Bros Bagels location inside. 
- 17 McDonald Hall and Arena**
Home of the department of kinesiology and of studios for the department of theatre and dance. The building also has classrooms, offices, fitness and recreation spaces.
- 18 Sichel Hall**
Home to the department of English.
- 19 Cheek Hall**
Home of the department of mathematics, department of computer science and one of the university's open computer labs.
- 20 Strong Hall**
Home of the College of Humanities and Public Affairs and programs.
- 22 Roy Blunt Hall**
Home of the College of Natural and Applied Sciences and programs.
- 23 Pummil Hall**
Home of the School of Social Work, department of hospitality and restaurant
- 24 Hill Hall**
Home to the College of Education and the department of psychology.
- 25 Ellis Hall**
Home to the department of music.
- 26 Karls Hall**
Home of the William H. Darr College of Agriculture.
- 27 Kemper Hall**
Home to the department of physics, astronomy and materials science, and provides space to the department of technology and construction management.
- 28 Craig Hall**
Home to the department of communication; department of media, journalism and film; and department of theatre and dance.
- 30 Brick City**
Home to the department of art and design, and art programs. Located downtown.

CAMPUS BUILDINGS

- 2 Juanita K. Hammons Hall**
Performing arts theater and venue.
- 6 John Q Hammons Student Center** 
Facility that hosts Missouri State University volleyball matches, swim meets, community events and more. It contains a swimming pool, racquetball courts, basketball courts, offices, a lounge area and large varsity locker rooms. The facility is available for recreational use by MSU students, faculty, staff and alumni.
- 7 Great Southern Bank Arena**
Missouri State University basketball court and arena.
- 8 Bill R Foster and Family Recreation Center** 
A place for the entire campus community to work out, play and learn about healthy living. The center includes an indoor jogging track, basketball courts, a fitness center, rock climbing and bouldering walls and lounge areas. It also includes an aquatics center with a large, recreational pool that has lap lanes, underwater seating with hydrotherapy jets, a zip line, a water-current channel and wheelchair accessibility.
- 9 Magers Health and Wellness Center**
The medical home for the Missouri State community. Our medical and professional staff are dedicated to providing quality health and preventive care at minimum cost.
- 10 Missouri State Bookstore**
Official bookstore of Missouri State University.
- 11 University Hall**
Home of several academic offices and programs for student advisement and support including the Honors College and Academic Advisement Center.
- 12 Davis-Harrington Welcome Center**
Primary entrance to Missouri State University and a place to welcome visitors, prospective students and other University guests. The Welcome Center is the designated starting point for campus tours.
- 14 Robert W. Plaster Student Union (PSU)**
Main food and retail vendors, a theatre, conference and meeting spaces, student organization offices, student service offices and administrative offices, as well as the Multicultural Resource Center and the Bear Pantry.






- 16 Duane G. Meyer Library**
Main library and the home of the BearCLAW, University Testing Center and TRIO. The library offers open and private study spaces along with access to books, online periodicals, newspapers, computer labs and more.
- 21 Carrington Hall**
Main administration building. The office of the president, office of the registrar, office of financial aid, Bursar's office, Graduate College and more are located within this building.
- 29 Robert W. Plaster Stadium**
Home to the Missouri State football team.

LET'S GET STARTED

ARE YOU READY TO MAKE YOUR MISSOURI STATEMENT?

STEP ONE

Get admitted

Admission applications are open now for the 2025-26 academic year. We encourage you to apply early and accept your offer of admission by paying the \$150 enrollment fee.

Office of Admissions

- 📧 Admissions.MissouriState.edu
- ✉ Admissions@MissouriState.edu
- ☎ 417-836-5517 or 800-492-7900

STEP TWO

Get your meningitis vaccination

Missouri law requires every student residing on campus to document they have received the meningococcal vaccine within five years of enrollment unless a signed statement of medical or religious exemption is on file.

You will need to send this record to Magers Health and Wellness Center to receive a housing assignment.

- 📍 **Missouri State University
Magers Health & Wellness Center**
Attn: Medical Records Center
901 S. National Ave.
Springfield, MO 65897
- 📧 Health.MissouriState.edu
- ✉ MagersMedicalRecords@MissouriState.edu
- ☎ 417-836-4133

STEP THREE

Take a tour

Contact Admissions to get a tour of campus and our residence halls. You can also discover more about each of our residence halls on our website. Scan the QR code at the bottom of each residence hall page in this guide to see room tour videos, amenities and detailed room specifications. A virtual tour of campus and our residence halls is also available at MissouriState.edu/Visit.

STEP FOUR

Apply for housing and pay your deposit

Submit your housing application through your My.MissouriState portal.

My.MissouriState.edu

- ▶ Log in with your Missouri State account
- ▶ Discover the Housing card
- ▶ Click "Housing Application"

To get started, decide which LLC and/or residence hall meets your needs, then choose your meal plan package.

Once you have paid your \$100 housing deposit, met the meningitis requirement and co-signature requirements for the terms and conditions, your contract will be complete. The date you complete your contract will become the priority date for your housing assignment.

STEP FIVE

Check your e-mail

We will e-mail your housing assignment to your Missouri State e-mail account. The first round of assignments are made in April for the fall semester and November for the spring semester. Assignments will be made and sent out at the end of each month. Priority is given in the order in which we receive completed applications, so complete your application early!

STEP SIX

Attend SOAR

We'll see you during your orientation session. Visit the Residence Life, Housing and Dining office in Hammons House 104 or our table at the SOAR Expo if you have any questions. If you selected a living-learning community, stop by the table at the SOAR Expo to meet some of our staff members in the program.

PREPARE FOR MOVE-IN

HERE'S HOW TO MAKE THE MOST OF YOUR FIRST DAYS ON CAMPUS!

WHEN CAN YOU MOVE IN?

Fall:

Move-in begins for most students Thursday before the first day of classes. Welcome Weekend events will take place throughout the entire weekend of move-in. Make sure to check your student email and our website, ResLife.MissouriState.edu closer to Fall for more detailed information.

Spring:

The Spring Housing Application opens in October. Move-in begins the Saturday before the first day of classes. Make sure to check your student email and our website, ResLife.MissouriState.edu closer to Spring for more detailed information.



ADVICE FROM RESIDENCE LIFE

APPLY EARLY!

The date you complete your housing contract will become the priority date for your housing assignment. Complete your application as soon as possible to be more likely to get the housing assignment and preferred roommate that you request.

GET INVOLVED

We offer more than 325 student led organizations. These present opportunities to learn new skills, gain leadership experience and meet new people.

COMMONLY ASKED QUESTIONS

Check out our website for answers to frequently asked questions or contact us with your questions. We are always happy to help!



YOUR TO-DO LIST BEFORE MOVE-IN

Before you Arrive:

1. Find out who your roommates and suitemates are via the Housing card: My.MissouriState.edu
2. Review the "What to bring and what not to bring" list: MissouriState.edu/Welcome/Packing-List.htm
3. Talk with your roommates about who's bringing what.
4. Label all of your packed boxes with your name and your room number.
5. Make sure to check your student email and our website closer to move-in for our Guide to Move-in and more detailed information.

HOW TO REQUEST A PREFERRED ROOMMATE

Within the housing application is a feature called "Preferred Roommate Selection" where you can indicate one preferred roommate. To invite your friend to be your preferred roommate, both you and the other person must have a completed housing application on file.

HOW TO FIND THE PERFECT ROOMMATE

Room with a friend:

Do you already know who you would like to be your roommate? First, complete your housing application, then using the preferred roommate feature, invite that person to be your preferred roommate using their name or BearPass ID. They will then need to accept your request.

Meet someone new:

Do you want to choose your roommate, but don't know anyone who would be a good fit? Once you have been admitted, you can download the ZeeMee app, create a profile and submit the "Find a Roommate" quiz to be matched with compatible roommates! Don't forget to then select them as your preferred roommate in the housing application.

Let us match you:

"Random" roommates are anything but. If you don't have a preferred roommate, Residence Life will use a set of questions in your housing application to pair you with someone who has similar living preferences and personality traits.

MISSOURI STATE UNIVERSITY **RESIDENCE LIFE,** HOUSING AND DINING SERVICES

901 S. National Ave | Springfield, MO 65897



CONTACT US

- 📞 417-836-5536
- ✉ ResidenceLife@MissouriState.edu
- 🌐 ResLife.MissouriState.edu

FOLLOW US

- 📷 @ResLife_MSU
- 📘 @MoStateResLife
- ✂ @MoState_ResLife

Missouri State University adheres to a strict non-discrimination policy and does not discriminate on the basis of race, color, national origin (including ancestry, or any other subcategory of national origin recognized by applicable law), religion, sex (including marital status, family status, pregnancy, sexual orientation, gender identity, gender expression, or any other subcategory of sex recognized by applicable law), age, disability, veteran status, genetic information, or any other basis protected by applicable law in employment or in any program or activity offered or sponsored by the University. Sex discrimination encompasses sexual harassment, which includes sexual violence, and is strictly prohibited by Title IX of the Education Amendments of 1972.