

MISSOURI STATE UNIVERSITY **CAMPUS HOUSING** **GUIDE**



LIVE LIKE A BEAR

WE'RE HERE FOR YOU

LIVE LIKE A BEAR.

We understand that moving to a new place may be intimidating, but living on campus will make your transition seamless. Our residence hall communities will help you build relationships that will last a lifetime while providing leadership opportunities, nutritional food options and quiet, comfortable places to study and relax; creating a Missouri State University experience you will remember forever.

On-campus housing is the right choice. You will have the advantage of being close to classes, the library, recreation facilities and the student organizations and events that make campus life rewarding.

In addition, on-campus students consistently perform academically better than their off-campus peers.

This housing guide will help you with one of your biggest decisions – determining where to live. We've provided a description of every residence hall and outlined the features that make each one unique. You will also learn about our living-learning communities, dining services and our housing application process.





TABLE OF CONTENTS

1	Contents
2-3	Blair-Shannon House
4-5	Freudenberger House
6-7	Hammons House
8-9	Heitz House
10-11	Hutchens House
12-13	Scholars House
14-15	Wells House
16-17	Woods House
18-19	Monroe Apartments
20-21	Sunvilla Apartments
22	Housing Rates
23	Residence Halls at-a-glance
24-25	Dining
26	Be a Leader
27-29	Living-Learning Communities
30	ResNet
31	On-campus Resources
32	How to Apply for Housing
33	Move-in Details



BLAIR-SHANNON HOUSE



1001 E. Madison St.
Springfield, MO 65807



417-836-5196



ResLife.MissouriState.edu/BlairShannon



700+
STUDENTS

15
FLOORS

THIS IS BLAIR-SHANNON

Blair-Shannon is a two-tower building that houses the second-largest population on campus. The centrally-located residence hall is home to more than 700 students on 15 suite-style floors. Each suite houses six students in three double-occupancy bedrooms. You will enjoy the adjoining living area – complete with area rug and modern furniture – and the recently renovated en-suite bathroom with a double-sink vanity and shower.

The Grand Lounge offers a great place to meet, study, relax or play. The Blair-Shannon Dining Center is housed in the same building. Residents also enjoy covered bike racks and a spacious computer lab. Students have ample room to study with designated space set aside on each floor equipped with dry-erase boards, tables and chairs.

“I like living in Blair-Shannon because it’s super close to everything! I also love my floor community and have made some really great friends.”

- Claire Russell, Shannon Resident

AMENITIES

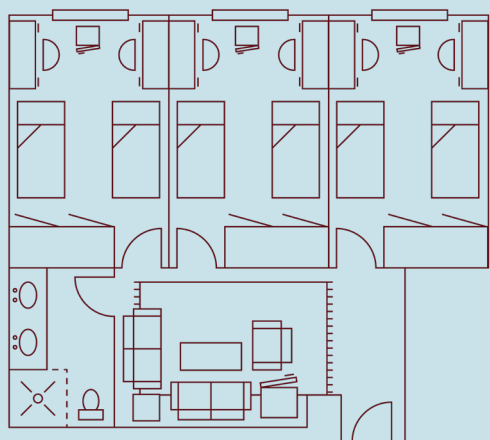
- 🏠 Suite-Style
- 💧 En-Suite Bathrooms
- 🍽️ Meal Plan Required
- ☀️ Closed Over Breaks
- 👤 Free Laundry on all floors
- 🔌 Appliances:
- 📺 Microwave
- 🧊 Mid-Size Fridge in Suite
- 🧊 Small fridge in Bedroom

SPECIAL FEATURES

- 📶 WiFi & Ethernet
- 📺 Community TV Lounge
- 🍽️ Community Kitchen
- 🛋️ Grand Lounge
- 🖨️ 24-Hour Computer Lab
- ★ Bunkable XL Twin Bed
- ★ Dining Center in Building
- ★ Music Practice Room



ROOM LAYOUT



6-PERSON SUITE



FREUDENBERGER HOUSE



1000 E. Madison St.
Springfield, MO 65807



417-836-5189



ResLife.MissouriState.edu/Freddy



700+
STUDENTS

5
FLOORS

MEET “FREDDY”

Freudenberger, or “Freddy,” is a five-story U-shaped residence hall with two-person and three-person rooms. Freddy houses the largest population on campus, accommodating more than 700 residents in room-style communities. Each room includes bunkable beds, wardrobes, desks and chest of drawers.

A large community bathroom is located in each hallway with individual shower stalls. Bathrooms are cleaned and fully-stocked by custodial staff. Students like Freddy’s central location, which is just a short walk from many campus amenities.

“I have loved living in Freddy! The location is so convenient and the custodial staff do an amazing job of keeping the building clean.”

- Maycee Nichols, Freddy Resident

AMENITIES

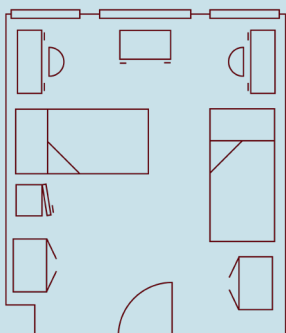
- 🏠 Room-Style
- 💧 Community Bathrooms
- 🍴 Meal Plan Required
- ☀️ Closed Over Breaks
- 👤 Two Free Laundry Rooms
- 🔌 Appliances:
- 🔥 Microwave
- 🧊 Mid-Size Fridge

SPECIAL FEATURES

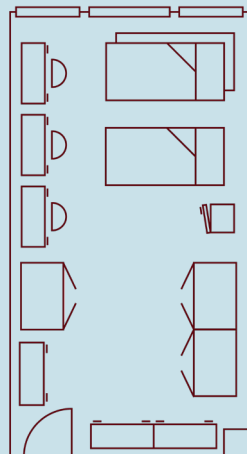
- 📶 WiFi & Ethernet
- 📺 Community TV Lounge
- 🍴 Community Kitchen
- 🛋️ Grand Lounge
- 🕒 24-Hour Computer Lab
- ★ Bunkable XL Twin Bed
- ★ Close to Dining Center
- ★ Piano in Grand Lounge
- ★ Large Grass Courtyard
- ★ Outdoor Ping Pong Table



ROOM LAYOUTS



2-PERSON ROOM



3-PERSON ROOM



HAMMONS HOUSE



1001 E. Harrison St.
Springfield, MO 65807



417-836-4907



ResLife.MissouriState.edu/Hammons



550+
STUDENTS

8
FLOORS

HELLO, HAMMONS

Hammons is an eight-story residence hall that offers two-person and four-person suite-style rooms and houses over 550 students.

Each suite has bunkable beds, open closet spaces, desks, chest of drawers, a kitchenette and an en-suite bathroom complete with a full tub and shower. Four-person suites also include a dining table and chairs.

You don't have to travel far to find food in Hammons; Garst Dining Center is attached to the building. Hammons also features Boomer's Convenience Store, which sells snacks, drinks, BearWear and other convenient items for the campus community.

"I've enjoyed my time in Hammons meeting new people. I've been able to get out of my shell and grow as a person while living on campus."

- Joshua Anderson, Hammons Resident

AMENITIES

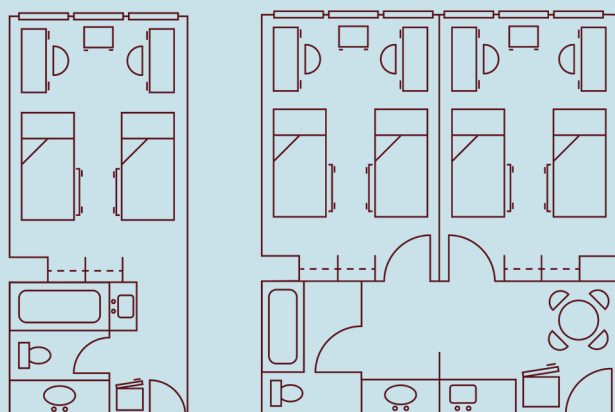
- 🏠 Suite-Style
- 💧 En-Suite Bathrooms
- 🍴 Meal Plan Required
- ☀️ Open Over Breaks
- 👤 Free Laundry
- 🔌 Appliances:
- 🔥 Microwave
- 🧊 Mid-Size Fridge in 2-Person
- 🧊 Full-Size Fridge in 4-Person

SPECIAL FEATURES

- 📶 WiFi & Ethernet
- 📺 Community TV Lounge
- 🍴 Community Kitchen
- 🛋️ Grand Lounge
- 💻 24-Hour Computer Lab
- ★ Bunkable XL Twin Bed
- ★ Connected to Dining Center
- ★ Convenience Store
- ★ Wood-look Flooring



ROOM LAYOUTS



2-PERSON SUITE

4-PERSON SUITE



HEITZ HOUSE



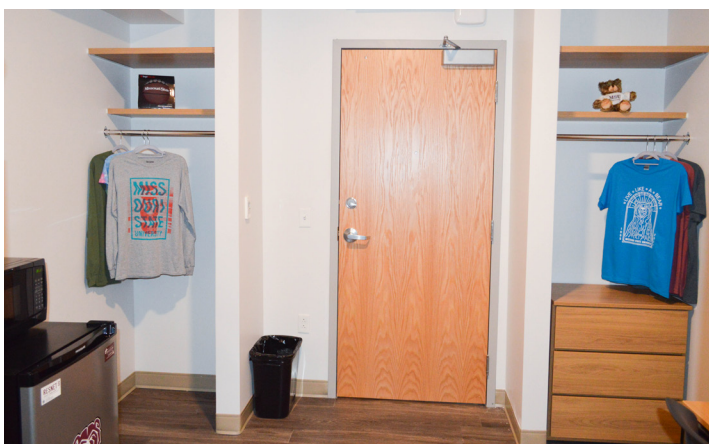
811 S. Holland Ave.
Springfield, MO 65806



417-837-7470



ResLife.MissouriState.edu/Heitz



400+
STUDENTS

3
FLOORS

FEEL AT HOME IN HEITZ

Heitz House is our newest building on campus, opening Fall of 2022. This seven-story building boasts four stories of limited covered parking (at an additional charge) with three stories of living space on top, housing more than 400 students.

Each room includes open closet spaces, loft-style beds, desks and set of drawers for each resident. Single-user private bathrooms with toilets, sinks and showers are located throughout each floor. Bathrooms are cleaned and stocked by custodial staff.

The first floor of Heitz features a dining center and convenience store. There is a spacious interior courtyard and lots of community spaces for hanging out with friends or studying.

“Heitz House is very nice and has an awesome courtyard in the middle of the building for outdoor activities and a calm place to study!”

- Hayden Day, Heitz Resident

AMENITIES

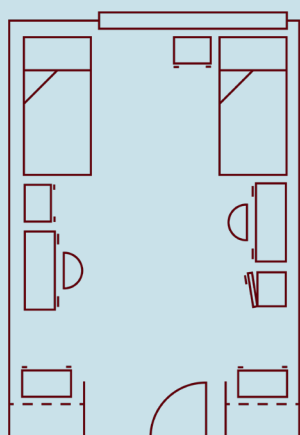
- 🏠 Room-Style
- 💧 Single-User Private Bathrooms
- 🍴 Meal Plan Required
- ☀️ Open Over Breaks
- 👤 Free Laundry on all floors
- 🔌 Appliances:
- 🔥 Microwave
- 🧊 Mid-size Fridge

SPECIAL FEATURES

- 📶 WiFi & Ethernet
- 📺 Community TV Lounge
- 🍴 Community Kitchen
- 🕒 24-Hour Computer Lab
- ★ Loft-Style XL Twin Bed
- ★ Reserved Garage Parking
- ★ Dining Center on First Floor
- ★ Retail Center on First Floor
- ★ Interior Courtyard



ROOM LAYOUT



2-PERSON ROOM



HUTCHENS HOUSE



1021 E. Harrison St.
Springfield, MO 65807



417-836-8484



ResLife.MissouriState.edu/Hutchens



550+
STUDENTS

8
FLOORS

SAY HI TO HUTCHENS

Hutchens is an eight-story residence hall that offers two-person and four-person suite-style rooms and is attached to Garst Dining Center and close to Boomer's Convenience Store.

Each suite has bunkable beds, wardrobes, desks, chest of drawers, a kitchenette and an en-suite bathroom complete with a full tub and shower. Four-person suites also include a dining table and chairs.

You don't have to travel far to find food in Hutchens; Garst Dining Center is attached to the building. Hutchens is close to Boomer's Convenience Store, which sells snacks, drinks, BearWear and other convenient items for the campus community.

"Living in Hutchens has been a great experience. I have met a lot of new friends I wouldn't have if I didn't live on campus."
- Caleb Thomas, *Hutchens Resident*

AMENITIES

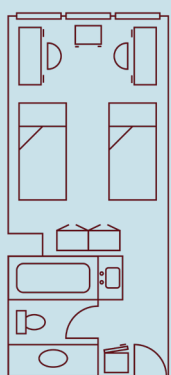
- 🏠 Suite-Style
- 💧 En-Suite Bathrooms
- 🍴 Meal Plan Required
- ☀️ Open Over Breaks
- 👤 Free Laundry
- 🔌 Appliances:
- 📺 Microwave
- 📺 Mid-Size Fridge in 2-Person
- 📺 Full-Size Fridge in 4-Person

SPECIAL FEATURES

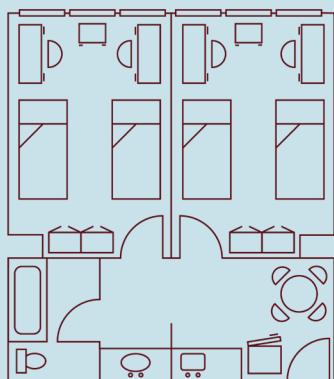
- 📶 WiFi & Ethernet
- 📺 Community TV Lounge
- 🍴 Community Kitchen
- 🛋️ Grand Lounge
- 💻 24-Hour Computer Lab
- ★ Bunkable XL Twin Bed
- ★ Connected to Dining Center
- ★ Close to Convenience Store
- ★ Wood-look Flooring
- ★ Music Practice Rooms



ROOM LAYOUTS



2-PERSON SUITE



4-PERSON SUITE



SCHOLARS HOUSE



1116 E. Cherry St.
Springfield, MO 65807



417-836-8787



ResLife.MissouriState.edu/Scholars



100+
STUDENTS

3
FLOORS

SOAR AT SCHOLARS

Scholars is a three-story residence hall that accommodates 115 students in suite-style rooms and is located adjacent to Garst Dining Center.

Each suite holds two double-occupancy bedrooms with bunkable beds, wardrobes, desks, set of drawers, and a large living area with lounge furniture and an area rug. The en-suite bathroom offers a shower stall and a separate vanity area with additional storage. All bedrooms have wood-look flooring.

Each floor offers a great and sizeable area for studying. The large student lounge houses game tables and a TV area where you and your friends can watch TV or play a game of pool.

"I'm so happy I chose to live in Scholars. It's a great place to have fun and spend time with friends, but also sit down and study."

- William Morris, Scholars Resident

AMENITIES

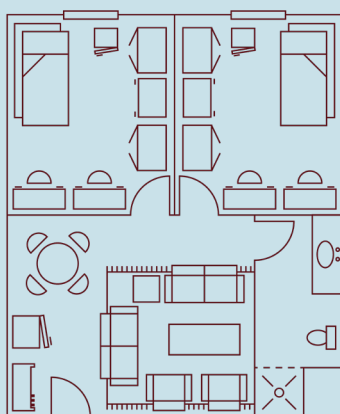
- 🏠 Suite-Style
- 💧 En-Suite Bathrooms
- 🍴 Meal Plan Required
- ☀️ Open Over Breaks
- 👕 Free Laundry
- 🔌 Appliances:
- 📺 Microwave
- 🧊 Small Fridge in Bedroom
- 🧊 Mid-Size Fridge in Suite

SPECIAL FEATURES

- 📶 WiFi & Ethernet
- 🍴 Community Kitchen
- 🛋️ Grand Lounge
- 🕒 24-Hour Computer Lab
- ★ Bunkable XL Twin Bed
- ★ Adjacent to Dining Center
- ★ Wood-look Flooring
- ★ Music Practice Rooms
- ★ Piano in Grand Lounge



ROOM LAYOUT



4-PERSON SUITE



WELLS HOUSE



1132 E. Madison St.
Springfield, MO 65807



417-836-5193



ResLife.MissouriState.edu/Wells



475+
STUDENTS

5
FLOORS

WELCOME TO WELLS

Wells is a five-story building that accommodates more than 475 residents in room- and suite-style living.

Each room offers bunkable beds, wardrobes, desks and set of drawers. Suite-style rooms offer two double-occupancy bedrooms and a separate living area with lounge furniture and a kitchenette. A large community bathroom is located on each hallway with individual stalls for showers. Bathrooms are cleaned and stocked by custodial staff.

Wells features a spacious recreation lounge perfect for games or hanging out with friends. The exterior courtyard located behind the building is also a great place to play ping pong or study.

“Wells is awesome; everyone is so nice and welcoming, especially my RA. I would recommend living on campus to new and returning students!”

- Molly Crawford, Wells Resident

AMENITIES

- 🏠 Suite-Style and Room-Style
- 💧 Community Bathrooms
- 🍴 Meal Plan Required
- ☀️ Closed Over Breaks
- 👤 Free Laundry
- 🔌 Appliances:
- 🔥 Microwave
- 🧊 Mid-Size Fridge

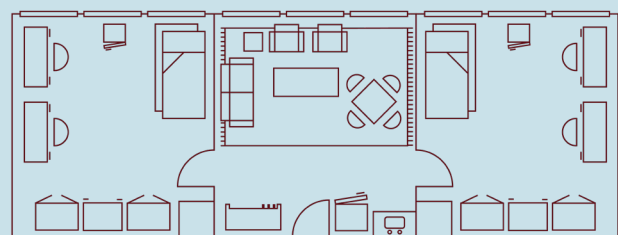
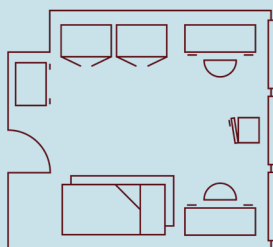
SPECIAL FEATURES

- 📶 WiFi & Ethernet
- 📺 Community TV Lounge
- 🍴 Community Kitchen
- 🛋️ Grand Lounge
- 🕒 24-Hour Computer Lab
- ★ Bunkable XL Twin Bed
- ★ Adjacent to PSU
- ★ Music Practice Room
- ★ Outdoor Ping Pong Table



ROOM LAYOUTS

2-PERSON ROOM



4-PERSON SUITE



WOODS HOUSE



WOODS HOUSE
1115



1115 E. Bear Blvd.
Springfield, MO 65807



417-836-5338



ResLife.MissouriState.edu/Woods



300+
STUDENTS

10
FLOORS

GET COZY AT WOODS

Woods is a recently-renovated 10-story residence hall that houses more than 300 students in room-style communities. Each room includes open closet spaces, loft-style beds, desks and a chest of drawers. Single-user private bathrooms with toilets, showers and sinks are located in each hallway. Bathrooms are cleaned and fully stocked by our custodial staff.

Enjoy the 10th-floor student lounge with panoramic views, a computer lab, TV lounge, music practice room and plenty of space to hang out with friends.

“Woods house is clean, fun and has a great environment. Living on campus is convenient and I’m always close to my classes.”

- Hannah Hoffmann, Woods Resident

AMENITIES

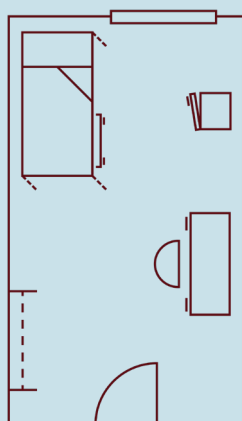
- 🏠 Room-Style
- 💧 Single-User Private Bathrooms
- 🍴 Meal Plan Required
- ☀️ Closed Over Breaks
- 👤 Free Laundry
- 🔌 Appliances:
- 🔥 Microwave
- 🧊 Mid-Size Fridge

SPECIAL FEATURES

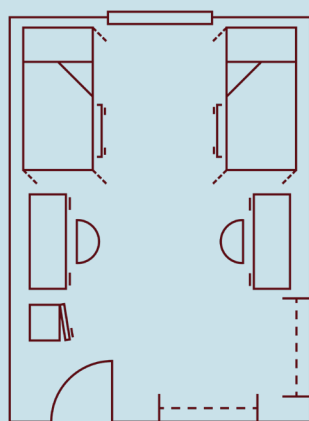
- 📶 WiFi & Ethernet
- 📺 Community TV Lounge
- 🍴 Community Kitchen
- 🕒 24-Hour Computer Lab
- ★ Loft-Style XL Twin Bed
- ★ Large Recreation Lounge
- ★ Music Practice Room
- ★ Media Room
- ★ Outdoor Ping Pong Table
- ★ TV Lounge on all floors



ROOM LAYOUTS



1-PERSON ROOM



2-PERSON ROOM





MONROE APARTMENTS



1141 E. Bear Blvd.
Springfield, MO 65807



417-836-8228



ResLife.MissouriState.edu/Monroe



100+
STUDENTS

4
FLOORS

MAKE IT YOURS IN MONROE

Monroe offers four stories of one-, two- and four-bedroom apartments housing students on an academic year contract, with summer contracts available upon request. Monroe is only open to upper-class students.

Apartments feature private bedrooms and bathrooms, furnished living rooms, washer and dryer and a kitchen with stainless steel appliances. There is limited private parking in a lot behind the building. Residents of legal drinking age are permitted to have and consume alcohol responsibly.

“Monroe provides great on-campus community as well as the apartment experience of being an upperclassman and living on your own.”

- Corrina Trimble, Monroe Resident

AMENITIES

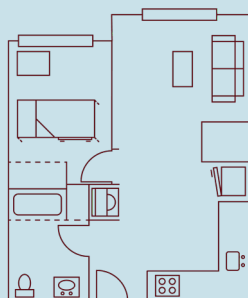
- 🏠 Apartments
- 💧 Private Bathrooms
- 🍽️ Meal Plan Optional
- ☀️ Open Over Breaks
- 🚿 En-Suite Washer/Dryer Set
- 🔌 Appliances:
- 📺 Microwave
- 🚪 Full-Size Fridge
- ★ Stove and Oven, Dishwasher

SPECIAL FEATURES

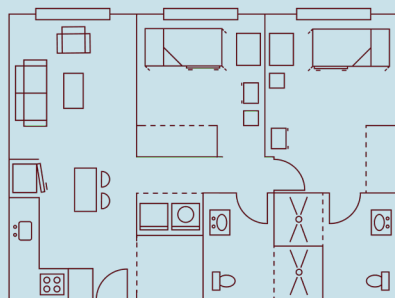
- 📶 WiFi & Ethernet
- ★ Community TV Lounge
- 🔗 24-Hour Computer Lab
- ★ XL Full or XL Twin Bed
- ★ Academic Year Contract
- ★ Upper-Class Students
- ★ Limited Private Parking
- ★ Close to Magers Health Center



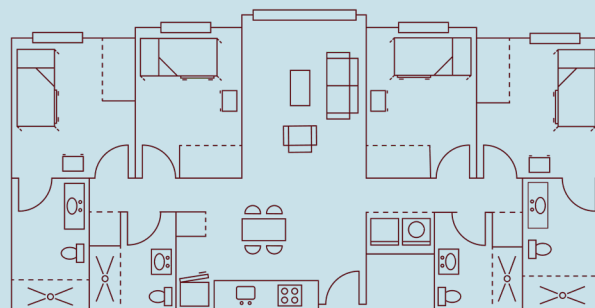
ROOM LAYOUTS



1-PERSON



2-PERSON



4-PERSON

SUNVILLA APARTMENTS



833 E. Elm St.
Springfield, MO 65806



417-836-5410



ResLife.MissouriState.edu/Sunvilla



225+
STUDENTS

18
FLOORS

SETTLE IN AT SUNVILLA

Sunvilla is an 18-story high-rise that offers residents two-, three- and four-person apartments on an academic year contract, with summer contracts available upon request. Sunvilla is only open to upper-class students.

Bedrooms in two- and four-person apartments are shared, while three-person apartments offer one private bedroom and one shared bedroom. Sunvilla offers kitchens with newer appliances, smart TVs, full-size beds and large closets. Residents of legal drinking age are permitted to have and consume alcohol responsibly.

“Sunvilla Tower is THE place to live. The rooms and facilities are amazing and the staff is awesome!”

- Emily Eigenmann, Sunvilla Resident

AMENITIES

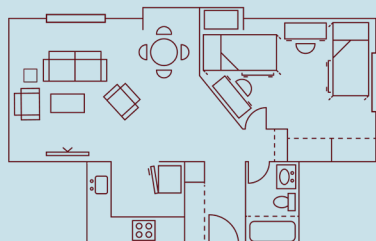
- 🏠 Apartments
- 💧 Shared En-Suite Bathrooms
- 🍽️ Meal Plan Optional
- ☀️ Open Over Breaks
- 👕 Free Laundry
- 🔌 Appliances:
- 📺 Microwave
- 📺 Full-Size Fridge
- ★ Stove & Oven, Dishwasher
- ★ Smart TV in Living Room

SPECIAL FEATURES

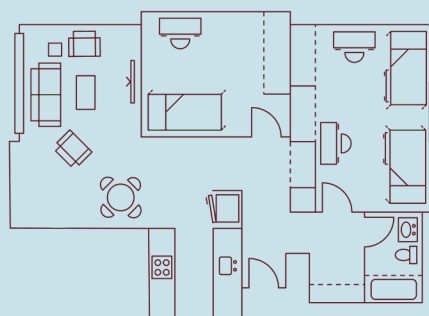
- 📶 WiFi & Ethernet
- 📺 Community TV Lounges
- ★ Large Recreation Lounge
- 🖨️ 24-Hour Computer Lab
- ★ XL Full Bed
- ★ 10-Month Contract
- ★ Upper-Class Students
- ★ Indoor Bicycle Storage



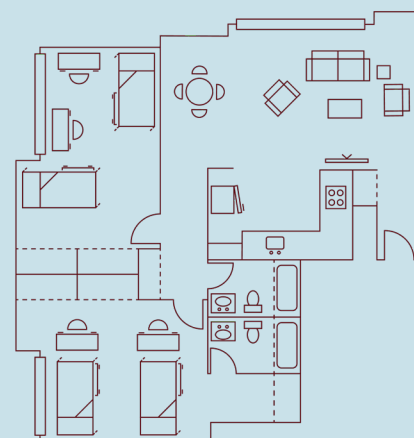
ROOM LAYOUTS



2-PERSON



3-PERSON



4-PERSON