

[illegible]



LIVE LIKE A BEAR.

We understand that moving to a new place may be intimidating, but living on campus will make your transition seamless. Our residence hall communities will help you build relationships that will last a lifetime while providing leadership opportunities, nutritional food options and comfortable places to study and relax; creating a Missouri State University experience you will remember forever.

On-campus housing is the right choice. You will have the advantage of being close to classes, the library, recreation facilities and the student organizations and events that make campus life rewarding.

In addition, on-campus students consistently perform academically better than their off-campus peers.

This housing guide will help you with one of your biggest decisions – determining where to live. We've provided a description of every residence hall and outlined the features that make each one unique. You will also learn about our living-learning communities, dining services and our housing application process.





CONTENTS

2	Blair-Shannon House
4	Freudenberger House
6	Hammons House
8	Heitz House
10	Hutchens House
12	Scholars House
14	Wells House
16	Woods House
18	Kentwood Hall
20	Monroe Apartments
22	Sunvilla Apartments
24	Housing Rates
25	Residence Halls At-A-Glance
26	Dining
30	Living-Learning Communities
32	ResNet
33	Get Involved
34	How to Apply for Housing
35	Move-In Details
36	Campus Map

BLAIR-SHANNON HOUSE



1001 E. Madison St.
Springfield, MO 65807



417-836-5196



ResLife.MissouriState.edu/BlairShannon



700+
RESIDENTS

15
FLOORS

BELONG IN BLAIR-SHANNON

Blair-Shannon is a two-tower building that houses the second-largest population on campus. The centrally-located residence hall is home to more than 700 students on 15 suite-style floors.

Each suite houses six students in three double-occupancy bedrooms. Each bedroom includes bunkable beds, built-in closet storage and desks. Rooms share an adjoining living area – complete with area rug and lounge furniture – and the en-suite bathroom with a double-sink, shower and toilet.

The Blair-Shannon Dining Center is located on the first floor. The large recreation lounge offers a great place to study or relax. Residents also have a study space on each floor equipped with dry-erase boards, tables and chairs.

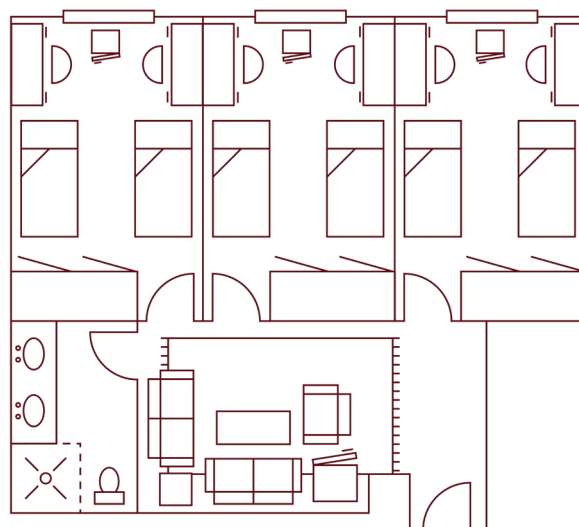
AMENITIES

- 🏠 Suite-Style
- 💧 En-Suite Bathrooms
- 🛏 Bunkable XL Twin Bed
- 🍴 Meal Plan Required
- ☀ Closed Over Breaks
- 👕 Free Laundry on All Floors
- 🔌 Appliances:
 - 🔌 Microwave
 - 🧊 Mid-Size Fridge in Suite
 - 🧊 Small Fridge in Bedroom

SPECIAL FEATURES

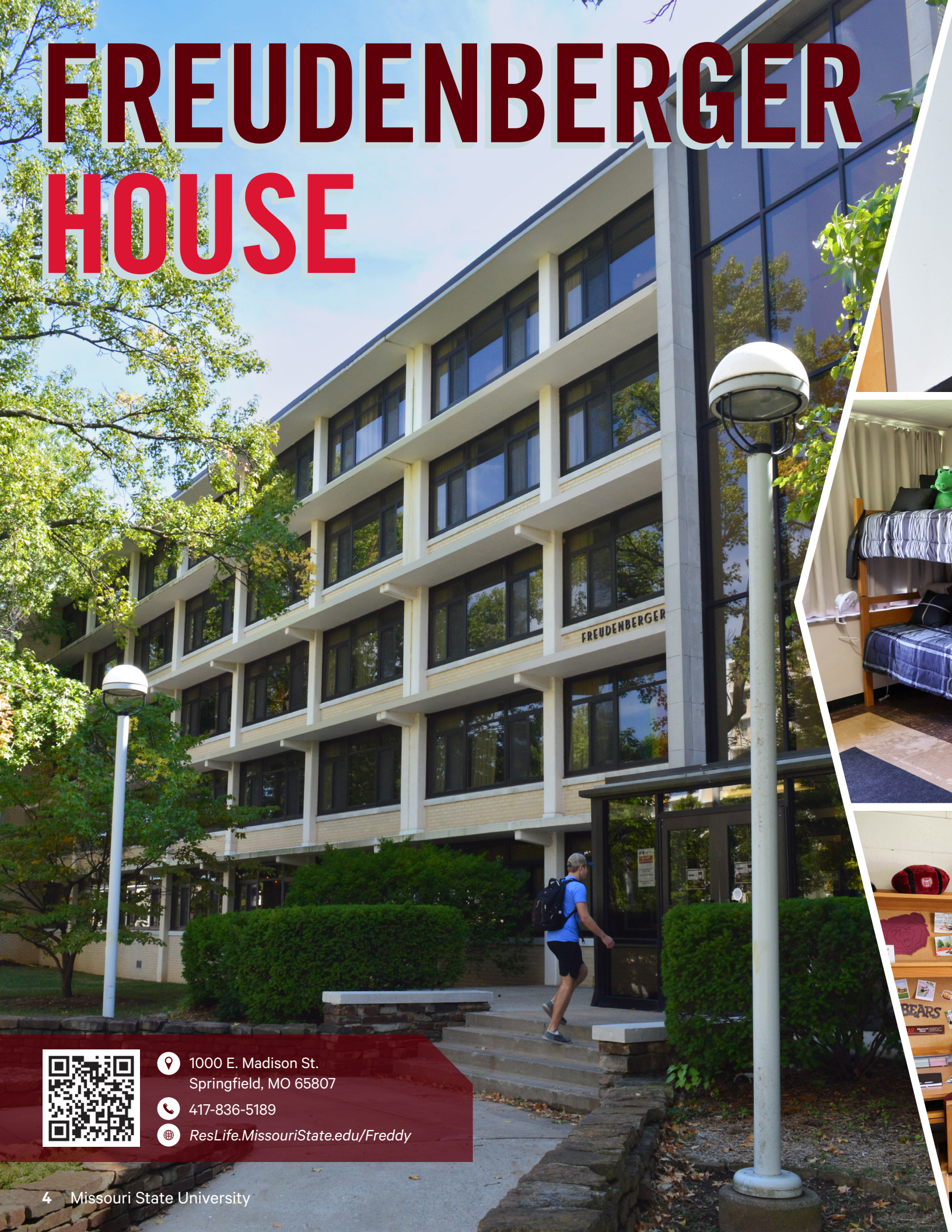
- 📶 Wi-Fi & Ethernet
- 🍴 Community Kitchen
- 🖨 24-Hour Computer Lab
- 📺 Community TV Lounge
- 🛋 Recreation Lounge
- ★ Dining Center on First Floor
- ★ Music Practice Room

ROOM LAYOUTS



6-PERSON SUITE

FREUDENBERGER HOUSE



1000 E. Madison St.
Springfield, MO 65807



417-836-5189



ResLife.MissouriState.edu/Freddy



700+
RESIDENTS

5
FLOORS

FEEL GOOD IN “FREDDY”

Freudenberger, or “Freddy,” is a five-story U-shaped residence hall with two-person and three-person rooms. Freddy houses the largest population on campus, accommodating more than 700 residents in room-style communities.

Each room includes bunkable beds, wardrobes, desks and a chest of drawers. A large community bathroom is located in each hallway with individual shower stalls. Bathrooms are cleaned and fully stocked by our custodial staff.

You’ll love Freddy’s central location, which is just a short walk from many campus amenities like the PSU, Foster Recreation Center, and Blair-Shannon Dining Center.

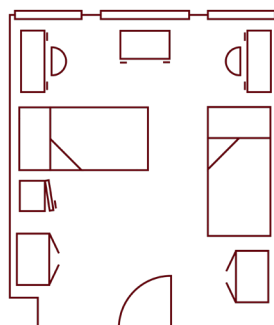
AMENITIES

- 🏠 Room-Style
- 💧 Community Bathrooms
- 🛏 Bunkable XL Twin Bed
- 🍴 Meal Plan Required
- ☀ Closed Over Breaks
- 👕 Free Laundry
- 🔌 Appliances:
 - 🔥 Microwave
 - 🧊 Mid-Size Fridge

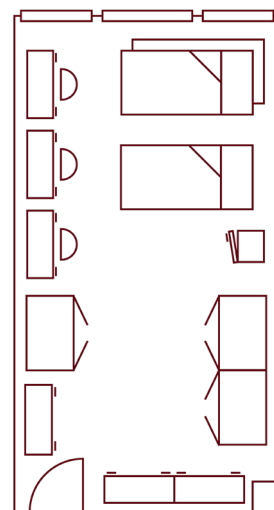
SPECIAL FEATURES

- 📶 Wi-Fi & Ethernet
- 🍴 Community Kitchen
- 💻 24-Hour Computer Lab
- 📺 Community TV Lounge
- 🛋 Recreation Lounge
- ★ Close to Dining Center
- ★ Exterior Courtyard
- ★ Piano in Lounge

ROOM LAYOUTS



2-PERSON ROOM



3-PERSON ROOM

HAMMONS HOUSE



1001 E. Harrison St.
Springfield, MO 65807



417-836-4907



ResLife.MissouriState.edu/Hammons





550+
RESIDENTS

8
FLOORS

HELLO HAMMONS

Hammons is an eight-story residence hall that offers two-person and four-person suite-style rooms and houses over 550 students.

Each suite has bunkable beds, open closet spaces, desks, chest of drawers, a kitchenette and an en-suite bathroom complete with a full tub and shower. Four-person suites also include a dining table and chairs.

You don't have to travel far to find food in Hammons; the Food Hall at Garst Dining Center is connected to the building on the first floor. Hammons also features Boomer's Convenience Store, which sells snacks, drinks, BearWear and other convenience items to the campus community.

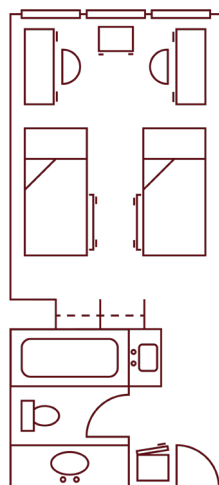
AMENITIES

- 🏠 Suite-Style
- 🚿 En-Suite Bathrooms
- 🛏 Bunkable XL Twin Bed
- 🍴 Meal Plan Required
- ☀ Open Over Breaks
- 👕 Free Laundry
- 🔌 Appliances:
 - 📺 Microwave
 - 📺 Mid-Size Fridge in 2-Person
 - 📺 Full-Size Fridge in 4-Person

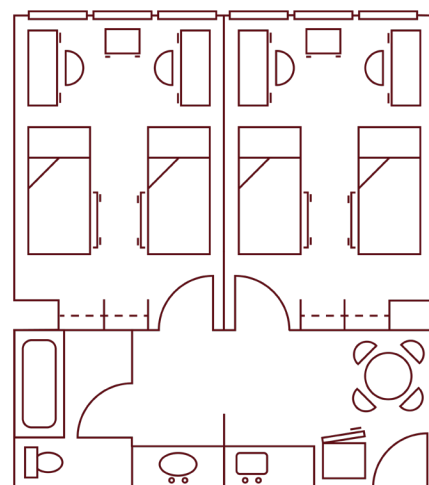
SPECIAL FEATURES

- 📶 Wi-Fi & Ethernet
- 🍴 Community Kitchen
- 🖨 24-Hour Computer Lab
- 📺 Community TV Lounge
- 🛋 Recreation Lounge
- ★ Connected to Dining Center
- ★ Convenience Store

ROOM LAYOUTS



2-PERSON SUITE



4-PERSON SUITE

HEITZ HOUSE



811 S. Holland Ave.
Springfield, MO 65806



417-837-7470



ResLife.MissouriState.edu/Heitz



400+
RESIDENTS

3
FLOORS

FEEL AT HOME IN HEITZ

Heitz House - our newest building on campus - is a seven-story building that boasts four stories of limited covered parking (at an additional charge) with three stories of living space on top, housing more than 400 students.

Each room includes open closet spaces, loft-style beds, desks and set of drawers for each resident. Single-user private bathrooms with toilets, sinks and showers are located throughout each floor. Bathrooms are cleaned and fully stocked by our custodial staff.

The first floor of Heitz features a dining center and convenience store. You'll love the spacious interior courtyard and large community spaces for hanging out with friends or studying.

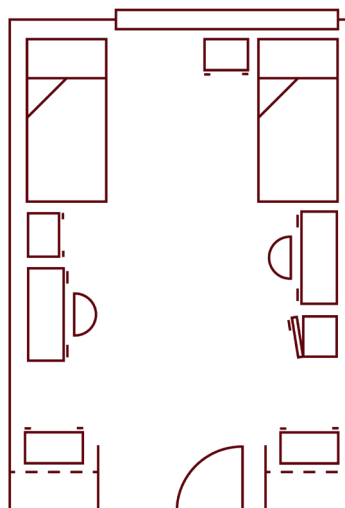
AMENITIES

- 🏠 Room-Style
- 💧 Single-User Private Bathrooms
- 🛏️ Loft-Style XL Twin Bed
- 🍴 Meal Plan Required
- ☀️ Open Over Breaks
- 👕 Free Laundry on All Floors
- 🔌 Appliances:
 - 🔌 Microwave
 - 🔌 Mid-Size Fridge

SPECIAL FEATURES

- 📶 Wi-Fi & Ethernet
- 🍴 Community Kitchen
- 🖨️ 24-Hour Computer Lab
- 📺 Community TV Lounge
- 🛋️ Recreation Lounge
- ★ Dining Center on First Floor
- ★ Convenience Store
- ★ Reserved Parking Garage
- ★ Interior Courtyard

ROOM LAYOUTS



2-PERSON ROOM

HUTCHENS HOUSE



1021 E. Harrison St.
Springfield, MO 65807



417-836-8484



ResLife.MissouriState.edu/Hutchens



550+
RESIDENTS

8
FLOORS

SAY HI TO HUTCHENS

Hutchens is an eight-story residence hall that offers two-person and four-person suite-style rooms and houses over 550 students

Each suite has bunkable beds, wardrobes, desks, a chest of drawers, a kitchenette and an en-suite bathroom complete with a full tub and shower. Four-person suites also include a dining table and chairs.

You don't have to travel far to find food in Hutchens; the Food Hall at Garst Dining Center is connected to the building, and just next door in Hammons is Boomer's Convenience Store, which sells snacks, drinks, BearWear and other convenience items to the campus community.

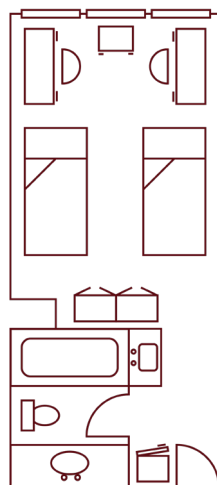
AMENITIES

- 🏠 Suite-Style
- 🚿 En-Suite Bathrooms
- 🛏 Bunkable XL Twin Bed
- 🍴 Meal Plan Required
- ☀ Open Over Breaks
- 👕 Free Laundry
- 🔌 Appliances:
 - 📺 Microwave
 - 📺 Mid-Size Fridge in 2-Person
 - 📺 Full-Size Fridge in 4-Person

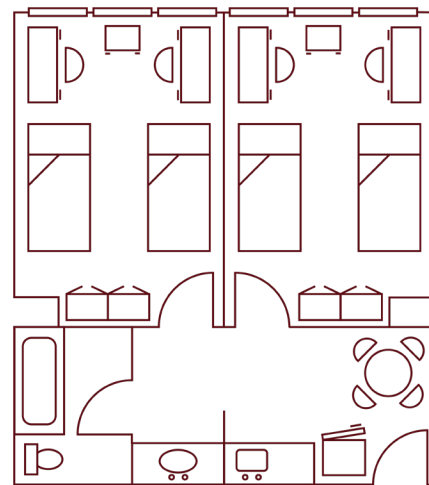
SPECIAL FEATURES

- 📶 Wi-Fi & Ethernet
- 🍴 Community Kitchen
- 🖨 24-Hour Computer Lab
- 📺 Community TV Lounge
- 🛋 Recreation Lounge
- ★ Connected to Dining Center
- ★ Close to Convenience Store
- ★ Music Practice Room

ROOM LAYOUTS



2-PERSON SUITE



4-PERSON SUITE

SCHOLARS HOUSE



1116 E. Cherry St.
Springfield, MO 65807



417-836-8787



ResLife.MissouriState.edu/Scholars



100+
RESIDENTS

3
FLOORS

SOAR AT SCHOLARS

Scholars is a three-story residence hall that accommodates 115 students in suite-style rooms and is located adjacent to the Food Hall at Garst Dining Center.

Each suite holds two double-occupancy bedrooms with bunkable beds, wardrobes, desks, set of drawers, and a large living area with lounge furniture and an area rug. The en-suite bathroom offers a shower stall and a separate vanity area with additional storage. All bedrooms have wood-look flooring.

Each floor offers a sizable area for studying. You'll love the large recreation lounge with game tables and a TV area where you can relax or play a game of pool with your friends.

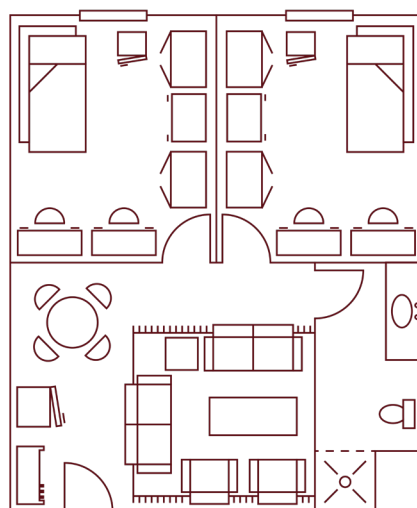
AMENITIES

- 🏠 Suite-Style
- 💧 En-Suite Bathrooms
- 🛏 Bunkable XL Twin Bed
- 🍴 Meal Plan Required
- ☀ Open Over Breaks
- 👕 Free Laundry
- ✂ Appliances:
 - 📺 Microwave
 - 📺 Small Fridge in Bedroom
 - 📺 Mid-Size Fridge in Suite

SPECIAL FEATURES

- 📶 Wi-Fi & Ethernet
- 🍴 Community Kitchen
- 🖨 24-Hour Computer Lab
- 📺 Community TV Lounge
- 🛋 Recreation Lounge
- ★ Close to Dining Center
- ★ Music Practice Rooms
- ★ Piano in Lounge

ROOM LAYOUTS



4-PERSON SUITE

WELLS HOUSE



1132 E. Madison St.
Springfield, MO 65807



417-836-5193



ResLife.MissouriState.edu/Wells



475+
RESIDENTS

5
FLOORS

WELCOME TO WELLS

Wells is a five-story U-shaped building that accommodates more than 475 residents in room- and suite-style living.

Each room offers bunkable beds, wardrobes, desks and a set of drawers. Suite-style rooms offer two double-occupancy bedrooms and a separate living area with lounge furniture and a kitchenette. A large community bathroom is located on each hallway with individual stalls for showers. Bathrooms are cleaned and fully stocked by our custodial staff.

Wells features a spacious recreation lounge perfect for games or hanging out with friends. You'll love the exterior courtyard located behind the building which is a great place to play ping pong, study, or play yard games.

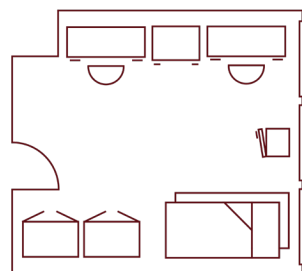
AMENITIES

- 🏠 Room-Style
- 💧 Community Bathrooms
- 🛏 Bunkable XL Twin Bed
- 🍴 Meal Plan Required
- ☀ Closed Over Breaks
- 👕 Free Laundry
- 🔌 Appliances:
 - 🔥 Microwave
 - 🧊 Mid-Size Fridge

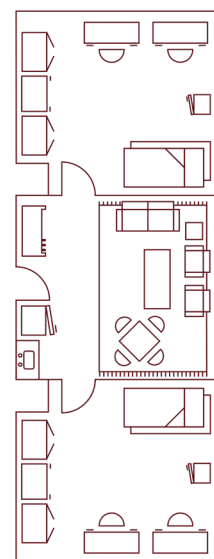
SPECIAL FEATURES

- 📶 Wi-Fi & Ethernet
- 🍴 Community Kitchen
- 💻 24-Hour Computer Lab
- 📺 Community TV Lounge
- 🛋 Recreation Lounge
- ★ Exterior Courtyard
- ★ Music Practice Room

ROOM LAYOUTS



2-PERSON ROOM



4-PERSON SUITE

WOODS HOUSE



1115 E. Bear Blvd.
Springfield, MO 65807



417-836-5338



ResLife.MissouriState.edu/Woods

WOODS HOUSE
1115



300+
RESIDENTS

10
FLOORS

DO WELL IN WOODS

Woods is a 10-story residence hall that houses more than 300 students in room-style communities.

Each room includes open closet spaces, loft-style beds, desks and chest of drawers. Single-user private bathrooms with toilets, showers and sinks are located in each hallway. Bathrooms are cleaned and fully stocked by our custodial staff.

Each floor features a small community TV lounge with modern furniture to hang out with friends or study. You'll enjoy the 10th-floor recreation lounge with game tables, a computer lab, TV lounge, music practice room and gorgeous panoramic views of campus.

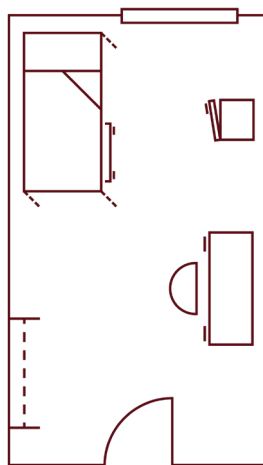
AMENITIES

- 🏠 Room-Style
- 💧 Single-User Private Bathrooms
- 🛏️ Loft-Style XL Twin Bed
- 🍴 Meal Plan Required
- ☀️ Closed Over Breaks
- 👕 Free Laundry
- 🔌 Appliances:
 - 📺 Microwave
 - 📺 Mid-Size Fridge

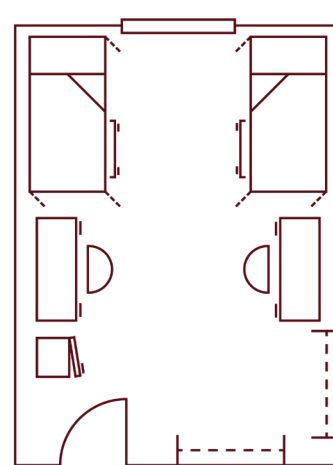
SPECIAL FEATURES

- 📶 Wi-Fi & Ethernet
- 🍴 Community Kitchen
- 🖨️ 24-Hour Computer Lab
- 📺 Community TV Lounge
- 🛋️ Recreation Lounge
- ★ TV Lounge on All Floors
- ★ Music Practice Room
- ★ Media Room

ROOM LAYOUTS



1-PERSON ROOM



2-PERSON ROOM

KENTWOOD HALL



700 E. Saint Louis St.
Springfield, MO 65806



417-836-4818



ResLife.MissouriState.edu/Kentwood



100+
RESIDENTS

6
FLOORS

GET COMFY AT KENTWOOD

Kentwood Hall is a renovated historic six-story building that houses over 100 students. Kentwood is only open to upper-class and transfer students

Kentwood offers private rooms, two-person rooms, super doubles and three-person rooms. Each room is carpeted and offers an en-suite bathroom and adjustable-height loft-style beds; the super doubles include a flat-screen TV and additional seating.

You'll love the large study lounge with dining machines where you can use your Dining Dollars to purchase a hot meal or smoothie. Residents of legal drinking age are permitted to have and consume alcohol responsibly. Also, Kentwood is on the Bear Line shuttle route, so getting around is a breeze.

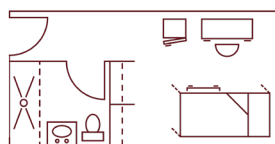
AMENITIES

- 🏠 Suite-Style
- 💧 En-Suite Bathrooms
- 🛏 Loft-Style XL Twin Bed
- 🍴 Meal Plan Required
- ☀ Open Over Breaks
- 👕 Free Laundry
- 🔌 Appliances:
 - 📺 Microwave
 - 📺 Mid-Size Fridge

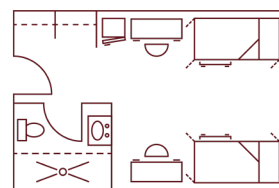
SPECIAL FEATURES

- 📶 Wi-Fi & Ethernet
- 🍴 Community Kitchen
- 💻 24-Hour Computer Lab
- 📺 Community TV Lounge
- 🛋 Recreation Lounge
- ★ Small Fitness Center
- ★ Large Study Lounge
- ★ Dining Machines
- ★ Upper-Class Students

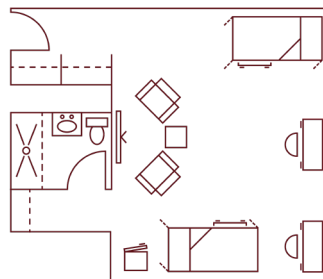
ROOM LAYOUTS



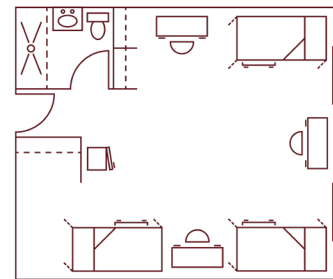
1-PERSON SUITE



2-PERSON SUITE



SUPER DOUBLE SUITE



3-PERSON SUITE

MONROE APARTMENTS



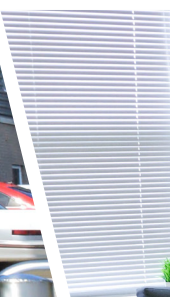
1141 E. Bear Blvd.
Springfield, MO 65807



417-836-8228



ResLife.MissouriState.edu/Monroe





100+
RESIDENTS

4
FLOORS

MEET MONROE

Monroe offers four stories of one-, two- and four-bedroom apartments housing students on an academic year contract, with summer contracts available upon request. Monroe is only open to upper-class students.

Apartments feature private bedrooms and bathrooms, furnished living rooms, washer and dryer and a kitchen with stainless steel appliances. There is limited private parking in a lot behind the building (at an additional charge). Residents of legal drinking age are permitted to have and consume alcohol responsibly.



AMENITIES

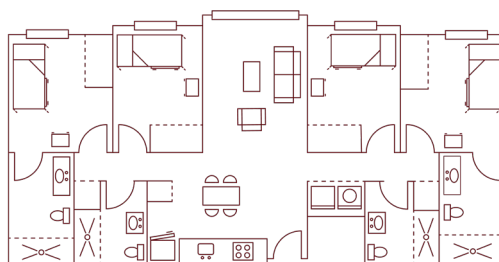
- 🏠 Apartments
- 💧 Private Bathrooms
- 🛏 XL Full or XL Twin Bed
- 🍴 Meal Plan Optional
- ☀ Open Over Breaks
- 👕 In-unit Washer/Dryer Set
- ✂ Appliances:
 - 📺 Microwave
 - 📺 Full-Size Fridge
 - ★ Dishwasher, Stove & Oven

SPECIAL FEATURES

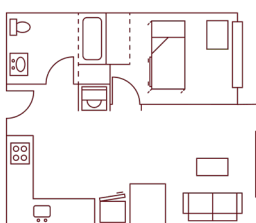
- 📶 Wi-Fi & Ethernet
- 🍴 Community Kitchen
- 🕒 24-Hour Computer Lab
- ★ Academic Year Contract
- ★ Upper-Class Students
- ★ Limited Private Parking



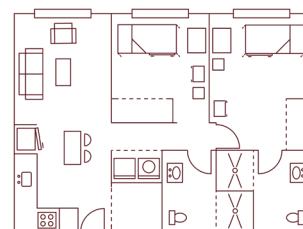
ROOM LAYOUTS



4-PERSON APT.



1-PERSON APT.



2-PERSON APT.

SUNVILLA APARTMENTS



833 E. Elm St.
Springfield, MO 65806



417-836-5410



ResLife.MissouriState.edu/Sunvilla





225+
RESIDENTS

18
FLOORS

SETTLE IN AT SUNVILLA

Sunvilla is an 18-story high-rise that offers residents two-, three- and four-person apartments on an academic year contract, with summer contracts available upon request. Sunvilla is only open to upper-class students.

Bedrooms in two- and four-person apartments are shared, while three-person apartments offer one private bedroom and one shared bedroom. Sunvilla offers kitchens with appliances, smart TVs, full-size beds and large closets. Residents of legal drinking age are permitted to have and consume alcohol responsibly.

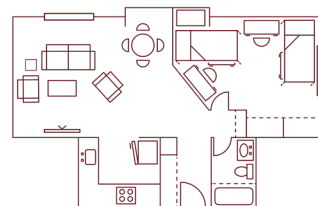
AMENITIES

- 🏠 Apartments
- 💧 Shared In-Unit Bathrooms
- 🛏 XL Full Bed
- 🍴 Meal Plan Optional
- ☀ Open Over Breaks
- 👕 Free Laundry
- ✂ Appliances:
 - 📺 Microwave
 - 📺 Full-Size Fridge
 - ★ Dishwasher, Stove & Oven
 - ★ Smart TV in Living Room

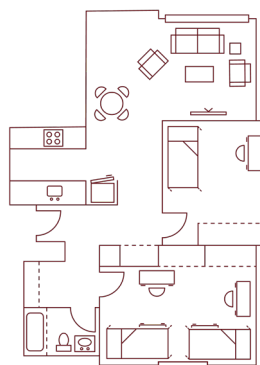
SPECIAL FEATURES

- 📶 Wi-Fi & Ethernet
- 🖨 24-Hour Computer Lab
- 📺 Community TV Lounges
- 🛋 Recreation Lounge
- ★ Academic Year Contract
- ★ Upper-Class Students
- ★ Indoor Bicycle Storage

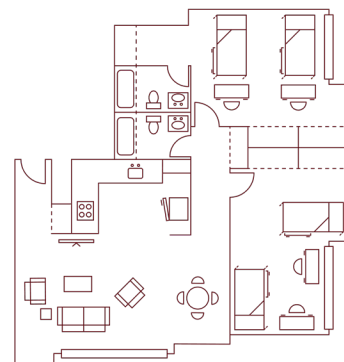
ROOM LAYOUTS



2-PERSON APT.



3-PERSON APT.



4-PERSON APT.

ON-CAMPUS HOUSING OPTIONS FOR ALL BUDGETS

Housing contracts are for both Fall and Spring semesters. A meal plan and a Dining Dollars package is required when living in room-style or suite-style housing. 2025-2026 rates are below and are subject to change. We offer private rooms when available; call to inquire about availability.

ROOM-STYLE HOUSING

<i>(Meal Plan Package required)</i>	Semester	Yearly
Freudenberger 2 & 3-Person, Wells 2-Person	\$3,383	\$6,766
Heitz 2-Person	\$3,835	\$7,670
Woods 1-Person	\$4,104	\$8,208
Woods 2-Person	\$3,481	\$6,962

SUITE-STYLE HOUSING

<i>(Meal Plan Package required)</i>	Semester	Yearly
Blair-Shannon 6-Person	\$3,835	\$7,670
Hammons or Hutchens 2-Person	\$4,847	\$9,694
Hammons or Hutchens 4-Person	\$4,229	\$8,458
Kentwood 1-Person	\$4,495	\$8,990
Kentwood 2 and 3-Person	\$3,857	\$7,714
Kentwood 2-Person Super Double	\$4,362	\$8,724
Scholars 4-Person	\$4,229	\$8,458
Wells 4-Person Suite	\$3,640	\$7,280

PRIVATE BED BUY-OUT HOUSING

Private rooms (when available) come at 1.5 times the standard cost. Private rooms are regular, 2-person rooms complete with two sets of furniture. The second set cannot be removed from the space.

<i>(Meal Plan Package required)</i>	Semester	Yearly
Blair-Shannon 6-Person	\$5,747	\$11,494
Freudenberger 2-Person, Wells 2-Person	\$5,069	\$10,138
Hammons or Hutchens 2-Person	\$7,265	\$14,529
Hammons, Hutchens, Scholars 4-Person	\$6,338	\$12,676
Heitz 2-Person	\$5,747	\$11,494
Wells 4-Person	\$5,454	\$10,908
Woods 2-Person	\$5,216	\$10,432

APARTMENT RATES

Apartments are for upper-class and transfer students. Although it is common for students to have a meal plan, they are not required in apartments. Contracts are for the fall and spring semesters. Current apartment students may sign separate contracts for summer.

<i>Monroe Apartment Room Types</i>	Semester Rate	Yearly Rate
1-Person Apartment	\$3,759	\$7,518
2-Person Apartment	\$3,648	\$7,296
4-Person Apartment	\$3,419	\$6,838

<i>Sunvilla Tower Room Types</i>	Semester Rate	Yearly Rate
2-Person Apartment	\$3,214	\$6,428
3-Person Apartment	\$3,075	\$6,150
3-Person Apartment - Private Room/Shared Bath	\$3,353	\$6,706
4-Person	\$2,926	\$5,852

RESIDENCE HALL FEATURES AT-A-GLANCE

RESIDENCE HALL	Room-Style	Suite-Style	En-Suite Bathrooms	Community Bathrooms	Private Bathrooms	Single-user Private Bathrooms	Meal Plan Package Required	Open Over Breaks	Community Kitchen	Dining Center Connected to Building	XL Twin Bed XL Full Bed	Music Practice Room	Free Laundry	24-Hr. Computer Lab	Wi-Fi and Streaming TV	TV Lounge	Microwave & Refrigerator
BLAIR-SHANNON		●	●				●		●	●	●	●	●	●	●	●	●
FREUDENBERGER ("FREDDY")	●			●			●		●		●		●	●	●	●	●
HAMMONS		●	●				●	●	●	●	●		●	●	●	●	●
HEITZ	●					●	●	●	●	●	●		●	●	●	●	●
HUTCHENS		●	●				●	●	●	●	●	●	●	●	●	●	●
KENTWOOD		●	●				●	●	●		●		●	●	●	●	●
SCHOLARS		●	●				●	●	●		●	●	●	●	●	●	●
WELLS	●	●		●			●		●		●	●	●	●	●	●	●
WOODS	●					●	●		●		●	●	●	●	●	●	●
MONROE APARTMENTS					●			●			● ●		●	●	●	●	●
SUNVILLA APARTMENTS			●					●	●		●		●	●	●	●	●



GLOSSARY

Room-Style: Number of students in room is 1-3 students.

Suite-Style: Students share a room and small common area with other students.

En-Suite Bathroom: The bathroom is attached to the housing unit.

Community Bathroom: The bathroom is located down the hall from your room.

Single-User Private Bathroom: Centrally located, single-user, mostly full bathrooms with lockable doors, like you would find at home, with additional shared sinks available.

Private Bathroom: You have your own bathroom to yourself.

Meal Plan Required: Meal plan and Dining Dollars package are required in these buildings.

Open Over Breaks: These buildings do not close for Thanksgiving, winter or spring break; open Aug. – May.

Community Kitchen: This building has a common kitchen that residents can use.

WE DO DINING RIGHT

WITH FLEXIBLE AND CONVENIENT DINING OPTIONS.

DINING AT MISSOURI STATE

Our culinary team creates flavorful food options to fit individual dietary needs with a sustainable dining experience. We are proud of the quality and variety we offer our students at Missouri State. Let us know how we can enhance your dining experience – we listen.



Scan here for detailed daily menus, nutritional information and hours of operation.



DineOnCampus.com/MissouriState



MEAL PLAN PACKAGES

A complete Meal Plan package consists of both Meals-Per-Week and Dining Dollars. Choose one tier from the Meals-Per-Week options and one tier from the Dining Dollar options. A Meal Plan package is required when living in room-style or suite-style housing, but optional for students living in Sunvilla and Monroe.

MEALS-PER-WEEK

Meals-Per-Week plans can be used at any of our three dining centers: Blair-Shannon, Garst, and Heitz. Each time a student visits, a meal is deducted from their weekly balance using their BearPass Student ID. The weekly swipes reset every Monday morning before breakfast. Meals-Per-Week plans can be lowered during the first three weeks of each semester, and increased at any time.

Meals-per-week	Semester	Yearly
10 Meals/week	\$1,460	\$2,920
14 Meals/week	\$1,479	\$2,958
19 Meals/week	\$1,506	\$3,012
Unlimited meals/week	\$1,612	\$3,224

DINING DOLLARS

Dining Dollars are a dollar-for-dollar declining balance plan, similar to a debit account, loaded onto your BearPass Student ID. Those dollars are subtracted from the balance each time a purchase is made. Dining Dollars are accepted at any dining location on campus and carry over from summer to fall and from fall to spring.

You Pay	Bonus Dollars	Total Dollars
\$192	\$18	\$210
\$242	\$23	\$265
\$310	\$30	\$340

PARENTS EAT FREE

Parents eat free in the dining halls with current residents who have a meal plan. Just let a staff member know when you tap your BearPass Student ID for your meal and their meal is on us.

OUR DINING OPTIONS

WE HAVE OPTIONS FOR YOU.

ALL-YOU-CARE-TO-EAT DINING CENTERS

Blair-Shannon Dining Center, located in Blair-Shannon House, and Heitz Dining Center, located in Heitz House, are buffet-style, all-you-care-to-eat dining centers. One meals-per-week swipe gets you into the dining center where you are able to eat as much as you like in the facility.

There are several different stations, that offer various cuisine:

- A station that serves American classics or international cuisine
- A station that serves allergen-friendly menu options that avoid the top nine allergens.
- A grill station that serves grilled favorites
- A pizza and pasta station
- A soup, sandwich and salad bar

FOOD HALL AT GARST DINING CENTER

The Food Hall at Garst Dining Center is connected to Hammons and Hutchens House. With one meals-per-week swipe, you get a ticket for one meal from the concept of your choice, and can even take it to-go! There is also the Extra Extra station that offers fruit and veggie cups, cereal and desserts available for you to add more sides as a bonus to your meal.

Concepts offered include:

- Absurd Bird offers fried chicken strips and fries. This station also offers a breakfast menu until 10:30 a.m.
- Smoked offers classic BBQ favorites
- La Mesa offers Latin dishes like burritos, bowls and nachos
- Harrison Street Subs offers made-to-order sandwiches and salads
- Delicious Without offers menus that avoid the top nine allergens
- An international station offers rotating menus throughout the year



A FOCUS ON OPTIONS AND DIETARY NEEDS

We can accommodate many dietary needs. We have an Ingredient Expert present in each dining center who is available to answer any questions about menu ingredients to help you make informed decisions. Our chefs and directors are always available to meet with students to discuss personal needs as well. We clearly label all menu items for specific dietary needs. Look for these labels in our dining halls:

AG Avoiding Gluten **P** Contains Pork **PR** Good Source of Protein
VG Vegan **V** Vegetarian **CF** Climate Friendly

MENUS & HOURS

- Blair-Shannon Dining Center is open 7:00 a.m.–7:00 p.m. seven daily.
- Heitz Dining Center is open 7:00 a.m.–7:00 p.m. Monday through Friday.
- The Food Hall at Garst Dining Center is open 7:30 a.m.–9:30 p.m. Monday through Friday. A late night dining menu is offered at 7:30 p.m.

*Hours may vary around campus breaks.

RETAIL DINING

Find these franchise restaurants at various locations around campus like the Plaster Student Union, Heitz House and Glass Hall:



STARSHIP FOOD DELIVERY

Our campus was the first in Missouri to roll out Starship food delivery services. Order from almost any on-campus location, and a Starship robot will deliver it to your building within minutes!



EVENTS WITH CAMPUS DINING

We have many events in our dining centers each semester that include themed meals, DIY activities, and giveaways!

LIVING-LEARNING COMMUNITIES

LIVE WITH LIKE-MINDED STUDENTS.



WHAT IS AN LLC?

Living-learning communities (LLCs) provide opportunities for you to meet students with similar goals and interests, develop new skills and enhance your experience as a college student. Missouri State University offers fourteen LLCs where students in the specified community live together on a residence hall floor. There are events and activities planned for the members of the LLC catering to the theme of that community.

WHY CHOOSE AN LLC?

87% of LLC students affirm that they were better able to connect with other students on their floor. As a member of an LLC you can also enjoy connections with faculty, staff and the Springfield community.

ACADEMIC COMMUNITIES

AGRICULTURE

DARR COLLEGE OF AGRICULTURE

From soil to plants to the animals that eat them, you will have an opportunity to get hands-on experience with everything from wildlife conservation to business and even sustainability.

BEARS BUSINESS COMMUNITY

COLLEGE OF BUSINESS

Participate in social and educational programs related to academics, professional development and personal growth as well as internship opportunities and tours to local businesses.

FUTURE EDUCATORS

COLLEGE OF EDUCATION

Fuel your passion for encouraging the development and education of children and adolescents. You will live with other students intending to be teachers or pursue a career in the field of education.

FUTURE HEALTH CARE PROFESSIONALS

MCQUEARY COLLEGE OF HEALTH AND HUMAN SERVICES

Live with others pursuing a profession in health care or human services. You will have the opportunity to attend events to connect with faculty, alumni or local health care professionals and organizations.

HONORS COMMUNITY

HONORS STUDENTS

Share ideas and learn with students from a variety of academic areas. You'll get connected to the Honors College through regular contact with faculty and staff members inside and outside the classroom.

STEM

COLLEGE OF NATURAL AND APPLIED SCIENCES

Participate in hands-on learning, tours and outreach related to science, technology and engineering. Seize opportunities to engage with professors outside of the classroom and find internships.



THEMATIC COMMUNITIES

BEARS FOR A JUST COMMUNITY

COMMUNITY ENGAGEMENT

Enhance your understanding of community and strengthen your role as an active member of society. Engage in topics like belonging, sustainability and service.

CREATIVE MINDS

ARTS AND CREATIVE EXPRESSION

Get inspired and live with like-minded creators. Major events have included a talent showcase, art workshops and opportunities to see performances and shows around Springfield.

FIRST-YEAR BEARS

EXPERIENCE

Enhance your first-year experience and help ease the transition into college life. You will learn about academic resources and explore the campus and Springfield community with other first-year students.

FIT & WELL

HEALTH AND WELLNESS

Focus on fitness, wellness and overall health. You will have the opportunity to participate in activities and experiences related to health, wellness, sports and fitness.

FINDING YOUR PATH

FROM PASSION TO CAREER

Explore academic options at MSU in a fun, creative way. You will explore which major is right for you or discover new areas of passion within your current major or future career plans.

LEADERSHIP

LEARNING TO LEAD

Build on your leadership skills. Focus on exploring leadership styles, identifying strengths and networking with campus and community leaders with other students who have a passion to lead.

GLOBAL COMMUNITY

CONNECTING THROUGH COMMUNITY

Students from around the world call our Global Community home. Make lifelong friends, share your culture and learn about others, and gain a deeper understanding of cultural perspectives and events.

TRANSFER BEARS

TRANSFER STUDENTS

Make your Missouri STATEment through shared experiences with other transfer students. Learn about Missouri State and Springfield, make campus connections and prepare for the path to graduation.

RESNET

RESIDENTIAL TECHNICAL SUPPORT FOR YOU.

ResNet serves as the technology hub for on-campus residents. Whether you have issues with your computer, gaming system, mobile devices, or network connection trouble, ResNet is here to help. All employees have varying backgrounds with computers and most are pursuing degrees and careers related to Information Technology. Perhaps best of all, ResNet's services are **free** to all students living in the residence halls!



TECHNOLOGY SUPPORT SERVICES


ResNet is here to help you with your technology troubles! Having issues connecting your device to the university Wi-Fi or printers? Need to diagnose or repair a problem with your hardware or software? Just looking for a recommendation on what laptop is the best for school? Call or submit a request online and our team will help you over the phone or make a visit to your room to help you in-person.

PRINTING

Each residence hall has a front desk printer that residents can use for free. Every resident is given 350 pages to print per semester (double-sided pages only count as one page). Students will also be able to print at Meyer Library and other campus computer labs through a separate printing account. Residents can bring their own personal printers, but wireless printers are not allowed.



 Hutchens House Basement

 417-836-6100

 [ResNet.MissouriState.edu](https://resnet.missouri-state.edu)

SERVICES OFFERED

- Hardware and software diagnostics and repair
- Assistance connecting to university networks
- Removal of viruses and malware
- Mobile phone support
- Technology recommendations
- Addressing computer safety issues
- On-site and room visits for assistance

TECHNOLOGY AMENITIES

- A 24-hour computer lab in every hall
- A wired Ethernet port for every resident
- Highly secure Wi-Fi connectivity
- 10 gigabit Internet connection in all buildings
- Smart Home device connectivity
- Free TV streaming and HBO Max subscription



GET INVOLVED

BE A PART OF SOMETHING BIGGER.

A \$12 activity fee is included in your housing contract each semester to provide funding for social and educational experiences on your floor, in your building and campus wide. Part of this fee also goes to your floor community with which your Resident Assistant plans many engaging events.

RESIDENCE HALL ASSOCIATION

Rha.MissouriState.edu

RHA plans events and represents the voice of all on-campus students by recommending programs, services, policies and procedures. RHA is made up of students from every residence hall and the apartments. Through RHA, you can get involved in a number of leadership positions and committees or attend regional and national leadership conferences.

HALL COUNCIL

Rha.MissouriState.edu/HallCouncils.htm

Hall council is an opportunity for student leaders in each residence hall to influence their community. Hall council members work together to create on-campus events and community service opportunities. Students can become executive board members for their hall councils or represent fellow residents on their floors by becoming floor president.

NATIONAL RESIDENCE HALL HONORARY

Organizations.MissouriState.edu/Nrhh

The Boomer Chapter of the National Residence Hall Honorary exists to provide recognition for students who have demonstrated important leadership skills. NRHH upholds the values of recognition and service through the “Of the Month” (OTM) program and by engaging with the community through service events.

RESIDENT ASSISTANT

ResLife.MissouriState.edu/BecomeAnRa

A Resident Assistant (RA) is a student leader housed on each residence hall floor to help with your transition to college life. After your first year, you can become one of these leaders and make a difference for other students by forming meaningful relationships with students on your floor and connecting them to each other and campus resources while building your own leadership skills.

DESK ASSISTANT

ResLife.MissouriState.edu/Student-Employment-Opportunities.htm

The Desk Assistant works shifts at residence hall front desks as assigned, organizing and updating information. This position is responsible for greeting visitors and professionally handling incoming phone calls, while being a resource for residents.

LET'S GET STARTED

ARE YOU READY TO MAKE YOUR MISSOURI STATEMENT?

STEP ONE

Get admitted

Admission applications are open now for the 2025-26 academic year. We encourage you to apply early and accept your offer of admission by paying the \$150 enrollment fee.

- Office of Admissions
- Admissions.MissouriState.edu
- Admissions@MissouriState.edu
- 417-836-5517 or 800-492-7900

STEP TWO

Get your meningitis vaccination

Missouri law requires every student residing on campus to document they have received the meningococcal vaccine within five years of enrollment unless a signed statement of medical or religious exemption is on file.

You will need to send this record to Magers Health and Wellness Center to receive a housing assignment.

- Missouri State University
Magers Health & Wellness Center
Attn: Medical Records Center
901 S. National Ave.
Springfield, MO 65897
- Health.MissouriState.edu
- MagersMedicalRecords@MissouriState.edu
- 417-836-4133

STEP THREE

Take a tour

Contact Admissions to get a tour of campus and our residence halls. You can also discover more about each of our residence halls on our website. Scan the QR code at the bottom of each residence hall page in this guide to see room tour videos, amenities and detailed room specifications. A virtual tour of campus and our residence halls is also available at MissouriState.edu/Visit.

STEP FOUR

Apply for housing and pay your deposit

Submit your housing application through your My.MissouriState portal.

My.MissouriState.edu

- Log in with your Missouri State account
- Find the Housing card
- Click "Housing Application"

To get started, decide which LLC and/or residence hall meets your needs, then choose your meal plan and Dining Dollars package.

Once you have paid your \$100 housing deposit, met the meningitis requirement and co-signature requirements for the terms and conditions, your contract will be complete. The date you complete your contract will become the priority date for your housing assignment.

STEP FIVE

Check your e-mail

We will e-mail your housing assignment to your Missouri State e-mail account. The first round of assignments are made in April for the fall semester and November for the spring semester. Assignments will be made and sent out at the end of each month. Priority is given in the order in which we receive completed applications, so complete your application early!

STEP SIX

Attend SOAR

We'll see you during your orientation session. Visit the Residence Life, Housing and Dining office in Hammons House 104 or our table at the SOAR Expo if you have any questions. If you selected a living-learning community, stop by our table at the SOAR Expo to meet some of our staff members in the program.

1
4
2
5
3
6



HOW TO REQUEST A PREFERRED ROOMMATE

Within the housing application is a feature called “Preferred Roommate Selection” where you can indicate one preferred roommate. To invite your friend to be your preferred roommate, both you and the other person must have a completed housing application on file.

HOW TO FIND THE PERFECT ROOMMATE

ROOM WITH A FRIEND:

Do you already know who you would like to be your roommate? First, complete your housing application, then using the preferred roommate feature, invite that person to be your preferred roommate using their name or BearPass ID number. They will then need to accept your request.

MEET SOMEONE NEW:

Do you want to choose your roommate, but don’t know anyone who would be a good fit? Once you have been admitted, you can download the ZeeMee app, create a profile and submit the “Find a Roommate” quiz to be matched with compatible roommates! Don’t forget to then select them as your preferred roommate in the housing application.

LET US MATCH YOU:

“Random” roommates are anything but random. If you don’t have a preferred roommate, we will use a set of questions in your housing application to pair you with someone who has similar living preferences and personality traits.

WHEN CAN YOU MOVE IN?

FALL:

Move-in begins Thursday before the first day of classes for most students. Welcome Weekend events will take place throughout the entire weekend of move-in. Make sure to check your student email and our website, ResLife.MissouriState.edu closer to Fall for more detailed information.

SPRING:

The Spring Housing Application opens in October. Move-in begins the Saturday before the first day of classes. Make sure to check your student email and our website, ResLife.MissouriState.edu closer to Spring for more detailed information.

YOUR TO-DO LIST BEFORE MOVE-IN

BEFORE YOU ARRIVE:

1. Find out who your roommate(s) and suitemates are via the Housing card: My.MissouriState.edu
2. Review the “What to bring and what not to bring” list: MissouriState.edu/Welcome/Packing-List.htm
3. Talk with your roommates about who’s bringing what.
4. Label all of your packed boxes with your name, building and room number.
5. Make sure to check your student email and our website closer to move-in for our Guide to Move-in and more detailed information.

ADVICE FROM RESIDENCE LIFE

APPLY EARLY!

The date you complete your housing contract will become the priority date for your housing assignment. Complete your application as soon as possible to be more likely to get the housing assignment and preferred roommate that you request.

GET INVOLVED

We offer more than 300 student led organizations. These present opportunities to learn new skills, gain leadership experience and meet new people.

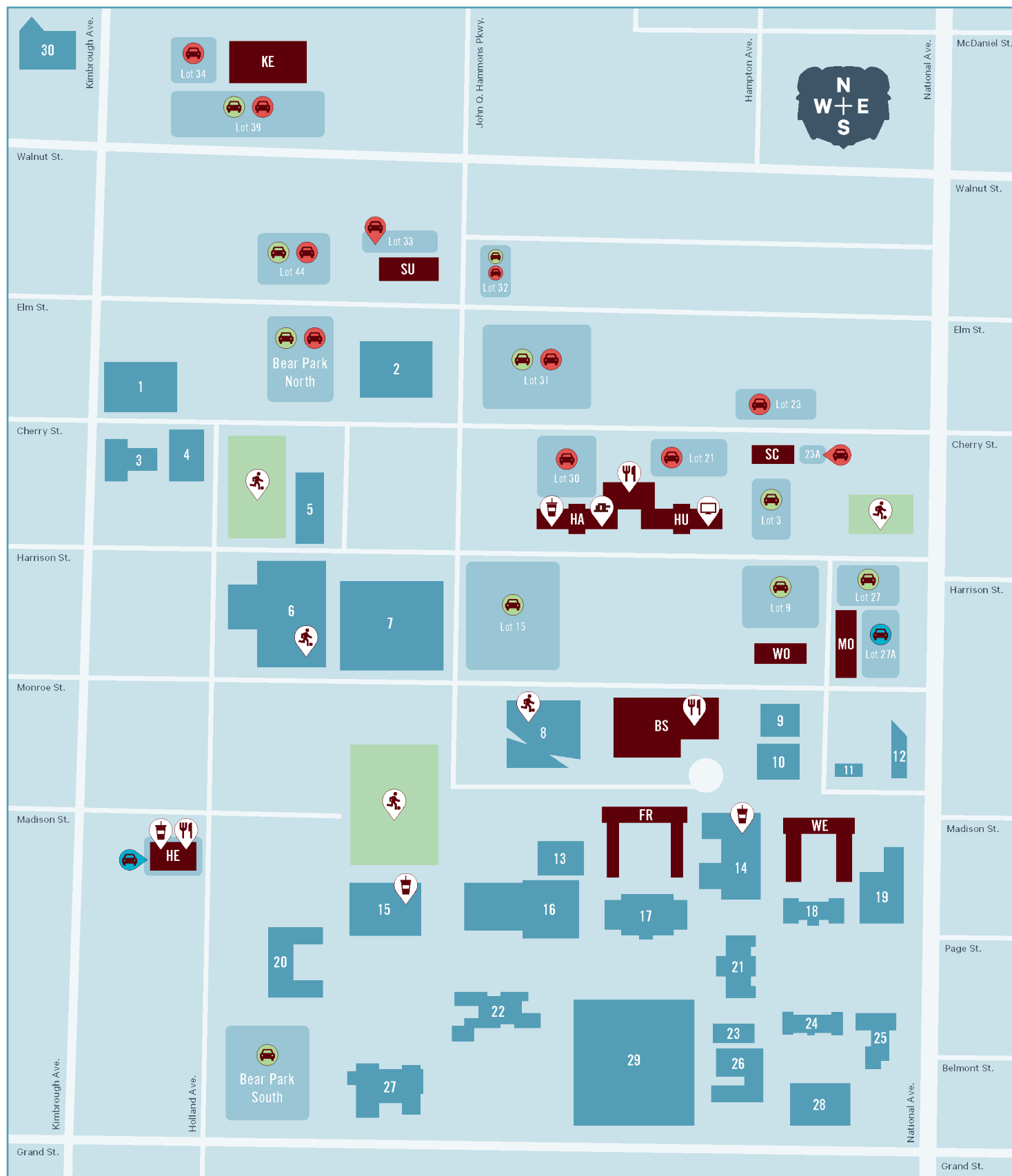
COMMONLY ASKED QUESTIONS

Check out our website for answers to frequently asked questions or contact us with your questions. We are always happy to help!



CAMPUS MAP

WHERE WILL YOU CHOOSE TO LIVE?



GET TO KNOW OUR CAMPUS

YOUR COMMUNITY IS ALWAYS CLOSE WHEN YOU LIVE ON CAMPUS.

RESIDENCE HALLS

- BS** Blair-Shannon
Connected to Blair-Shannon Dining Center
- FR** Freddy
- HA** Hammons
Connected to Food Hall at Garst
Connected to Boomer's Convenience
- HE** Heitz
Connected to Heitz Dining Center
Connected to Cafe Market 1905
- HU** Hutchens
Connected to Food Hall at Garst
- KE** Kentwood
- SC** Scholars
- WE** Wells
- WO** Woods

APARTMENTS

- MO** Monroe Apartments
- SU** Sunvilla Apartments



KEY

- Dining Center
- Retail Vendors
- Residence Life Office
- ResNet Office
- Recreation Area
- Green Permit Parking
- Red Permit Parking
- Reserved Permit Parking

ACADEMIC BUILDINGS

- 1 Ann Kampeter Health Sciences Hall**
Home of department of biomedical sciences, department of communication sciences and disorders, School of Nursing and department of sports medicine and athletic training.
- 3 McQueary Family Health Sciences Hall**
Home of the department of physical therapy and the master of public health program.
- 4 O'Reilly Clinical Health Sciences Center**
Home of the occupational therapy, physician assistant studies, nursing and nurse anesthesia programs and the MSU Care Clinic.
- 5 Wehr Band Hall**
Home of Missouri State Pride Bands and the University's band and music programs.
- 13 Forsythe Athletics Center**
Home to intercollegiate athletics programs of MSU, Coaches offices, and training rooms.
- 15 Glass Hall**
Home to the College of Business and programs. Einstein Bros Bagels location inside.
- 17 McDonald Hall and Arena**
Home of the exercise science, recreation administration and physical education programs. It also houses studios for the department of theatre and dance.
- 18 Siceluff Hall**
Home to the department of English.
- 19 Cheek Hall**
Home of the department of mathematics, department of computer science.
- 20 Strong Hall**
Home of the College of Humanities and Public Affairs and programs.
- 22 Roy Blunt Hall**
Home of the College of Natural and Applied Sciences and programs.
- 23 Pummil Hall**
Home of the School of Social Work, department of hospitality and restaurant management.
- 24 Hill Hall**
Home to the College of Education and the department of psychology.
- 25 Ellis Hall**
Home to the department of music.
- 26 Karls Hall**
Home of the William H. Darr College of Agriculture.
- 27 Kemper Hall**
Home to the department of physics, astronomy and materials science, and provides space to the department of technology and construction management.
- 28 Craig Hall**
Home to the department of communication; department of media, journalism and film; and department of theatre and dance.
- 30 Brick City**
Home to the department of art and design, and art programs. Located downtown.

CAMPUS BUILDINGS

- 2 Juanita K. Hammons Hall**
Performing arts theater and venue.
- 6 John Q Hammons Student Center**
Facility that hosts Missouri State University volleyball matches, swim meets, community events and more. It contains a swimming pool, racquetball courts, basketball courts, offices, a lounge area and large varsity locker rooms. The facility is available for recreational use by MSU students, faculty, staff and alumni.
- 7 Great Southern Bank Arena**
Missouri State University basketball arena.
- 8 Bill R Foster and Family Recreation Center**
A place for the entire campus community to work out, play and learn about healthy living. The center includes an indoor jogging track, basketball courts, a fitness center, rock climbing and bouldering walls and lounge areas. It also includes an aquatics center with a large, recreational pool that has lap lanes, underwater seating with hydrotherapy jets, a zip line, a water-current channel and wheelchair accessibility.
- 9 Magers Health and Wellness Center**
The medical home for the Missouri State community. Our medical and professional staff are dedicated to providing quality health and preventive care at minimum cost.
- 10 Missouri State Bookstore**
Official bookstore of Missouri State University.
- 11 University Hall**
Home of several academic offices and programs for student advisement and support including the Honors College and Academic Advisement Center and the Bear Pantry.
- 12 Davis-Harrington Welcome Center**
Primary entrance to Missouri State University and a place to welcome visitors, prospective students and other University guests. The Welcome Center is the designated starting point for campus tours.
- 14 Robert W. Plaster Student Union (PSU)**
Houses food and retail vendors, a theatre, conference and meeting spaces, student organization offices, student service offices and administrative offices, as well as the Bear Cave and Bear Pantry.
- 16 Duane G. Meyer Library**
Main library and the home of the BearCLAW, University Testing Center and the Disability Resource Center. The library offers open and private study spaces along with access to books, online periodicals, newspapers, computer labs and more.
- 21 Carrington Hall**
Main administration building. The office of the president, office of the registrar, office of financial aid, Bursar's office, Graduate College and more are located within this building.
- 29 Robert W. Plaster Stadium**
Home to the Missouri State football team.



VISIT OUR WEBSITE

CONTACT US

- 📞 417-836-5536
- ✉ ResidenceLife@MissouriState.edu
- 🌐 ResLife.MissouriState.edu

FOLLOW US

- 📷 @ResLife_MSU
- 📘 @MoStateResLife
- 📺 @MoState_ResLife

Missouri State University adheres to a strict non-discrimination policy and does not discriminate on the basis of race, color, national origin (including ancestry), or any other subcategory of national origin recognized by applicable law), religion, sex (including marital status, family status, pregnancy, sexual orientation, gender identity, gender expression, or any other subcategory of sex recognized by applicable law), age, disability, veteran status, genetic information, or any other basis protected by applicable law in employment or in any program or activity offered or sponsored by the University. Sex discrimination encompasses sexual harassment, which includes sexual violence, and is strictly prohibited by Title IX of the Education Amendments of 1972.